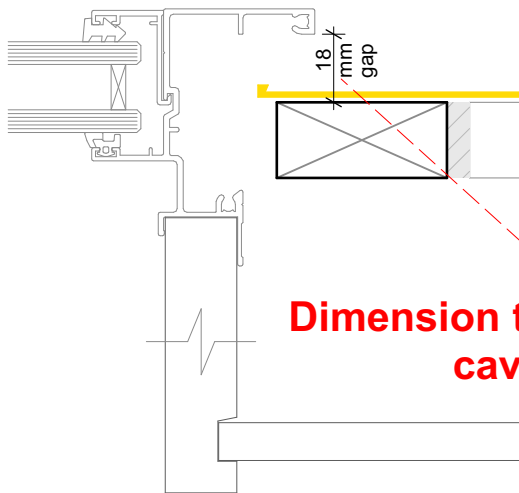
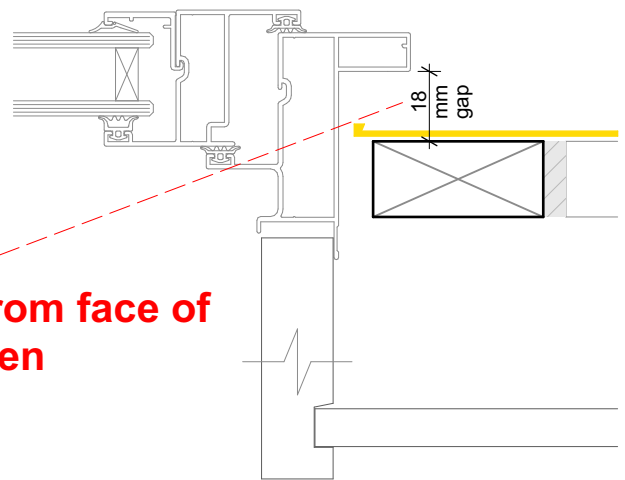


### Hollow Fin Joinery



### Solid Fin Joinery



**Dimension taken from face of cavity batten**

#### Cavity batten note:

- 20mm single castellated timber battens required for all Nu-Wall installations.
- Batten to have 15° slope for moisture egress
- Allow 6mm gap between vertical and horizontal battens
- Sill and head battens to be max. 500mm with a 6mm gap to each segment
- 18mm single castellated battens are available from Nu Wall for all vertical applications to wall junctions and jambs
- Proprietary Nu-Wall Alibat is available as an alternative when a structural non-combustable cavity batten is required