

Say goodbye to full-wall disassembly

When one board goes wrong, the whole wall pays for it.

Most aluminium cladding systems aren't designed to be revisited. Replacing a single mid-wall board often means starting from the cladding's finishing point and working backwards — removing panels, disturbing flashings, and dismantling perfectly good work.

A maintenance joint that works with our system — not against it.

The Nu-Wall Maintenance Joint® is engineered to integrate seamlessly with our most popular profiles. Each joint provides a clean, serviceable break point within the wall, so repairs or replacements can be made quickly, cleanly, and without disrupting the entire elevation.

Two Options. Seamless Integration.

Nu-Wall currently offers two Maintenance Joint options:

E70 MAINTENANCE JOINT

- 70mm cover width
- Designed for use with **E70/130**, and **E-Random** profiles
- Features a single 20mm negative detail to align with E-Series aesthetics

MONO50 MAINTENANCE JOINT

- 50mm cover width
- Designed for use with **Mono100**, **Mono200**, **Mono250**, **Mono400**, and **SS200** (Standing Seam)
- Clean, slim profile that blends seamlessly with Mono and Standing Seam systems

Designed to make a difference.



TARGETED REPAIRS, NOT FULL UNINSTALL

Remove only what's needed minimising the extent of removal needed.



CLEAN, REVERSIBLE DETAILING

Built-in disassembly point using Nu-Wall's proven rotate-in flashing method.



COMPATIBLE WITH LEADING PROFILES

Works seamlessly with Mono, E-Series, and Standing Seam profiles.

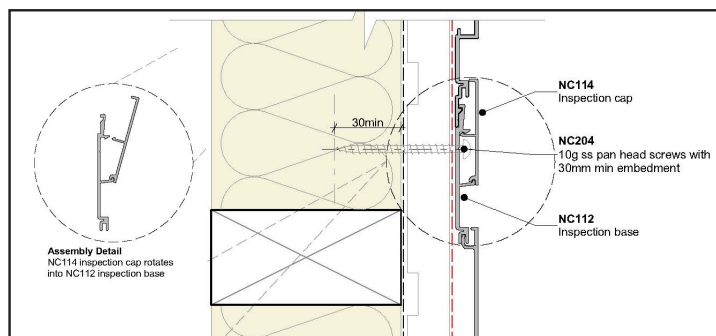


SMARTER PLANNING FOR HIGH-WEAR ZONES

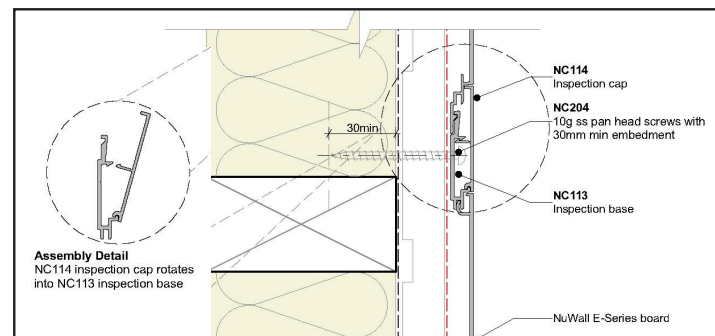
Perfect for service areas, high-impact walls, and future retrofit points.

Detailing the change.

E70 MAINTENANCE JOINT



MONO50 MAINTENANCE JOINT



New details are now available under Technical Resources on our website nuwall.co.nz

Easy to disassemble. Even easier to plan for.

The Maintenance Joint is built around a **simple two-part system: base and cap.**

THE BASE

Secures the previous board and maintains an E2 compliant cavity.

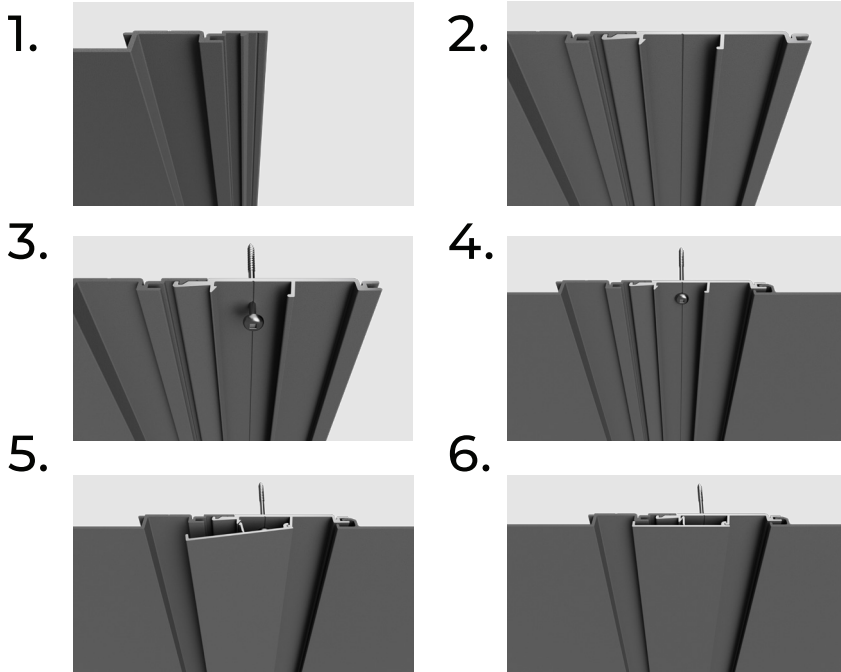
THE CAP

Rotates into place using Nu-Wall's proprietary fastening method — a favourite on site for its clean finish and no-fuss removal.

When it's time to revisit the wall, just remove the cap using Nu-Wall's plastic pry bar, unscrew the base, and deconstruct the cladding from that point backwards.

Installation made easy.

The Nu-Wall Maintenance Joint is fast, intuitive, and builder-friendly. Follow the 6-step process below to see how simple it is to remove and reassemble the system without damaging surrounding boards.



UPGRADE YOUR PROJECT TODAY

Contact us now for more information
or email info@nuwall.co.nz.

Copyright © 2025 Nu-Wall Cladding Ltd. All rights reserved.