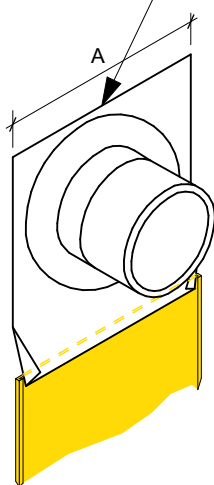


A = Pipe diameter
+ 100mm



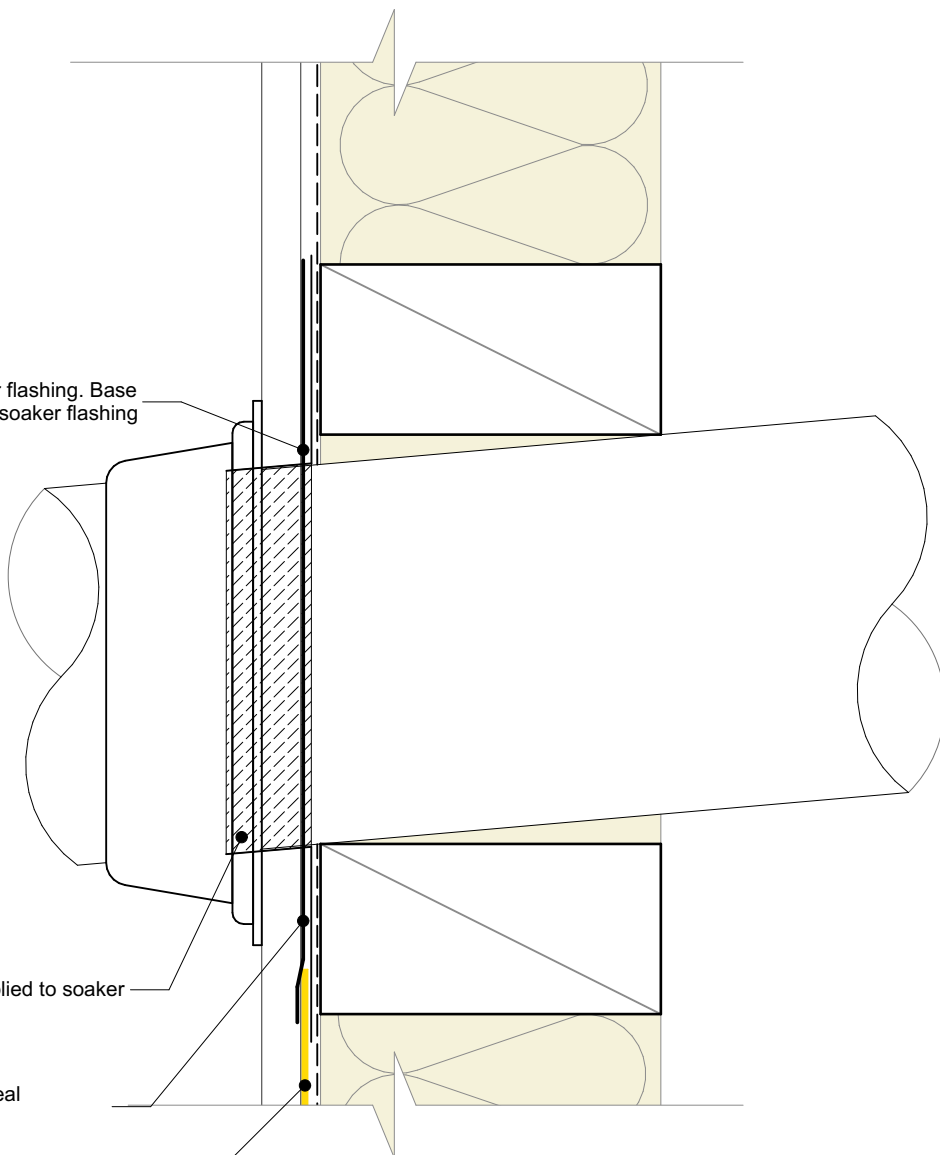
0.7mm Aluminium soaker flashing. Base tapered to fit in to plastic soaker flashing

Flexible flashing tape applied to soaker and pipe

Proprietary penetration seal (by others)

NC227

Plastic soaker flashing. Base extends down in to base channel.



General note:

- Cladding fixings omitted for clarity



nu-wall
CLADDING

**Nu-Wall cladding vertical direct fix
Typical pipe penetration**

© 2021 copyright in this document is the property of Nu-Wall Aluminium Cladding Limited. All rights reserved. Nu-Wall is a registered trademark of Aluminium Product Brands NZ Limited

NW-VDF-017.02

Drawn by: Nu-Wall

Date: 25/02/2025

Checked by: RL, GT

Scale: 1:2 @ A4