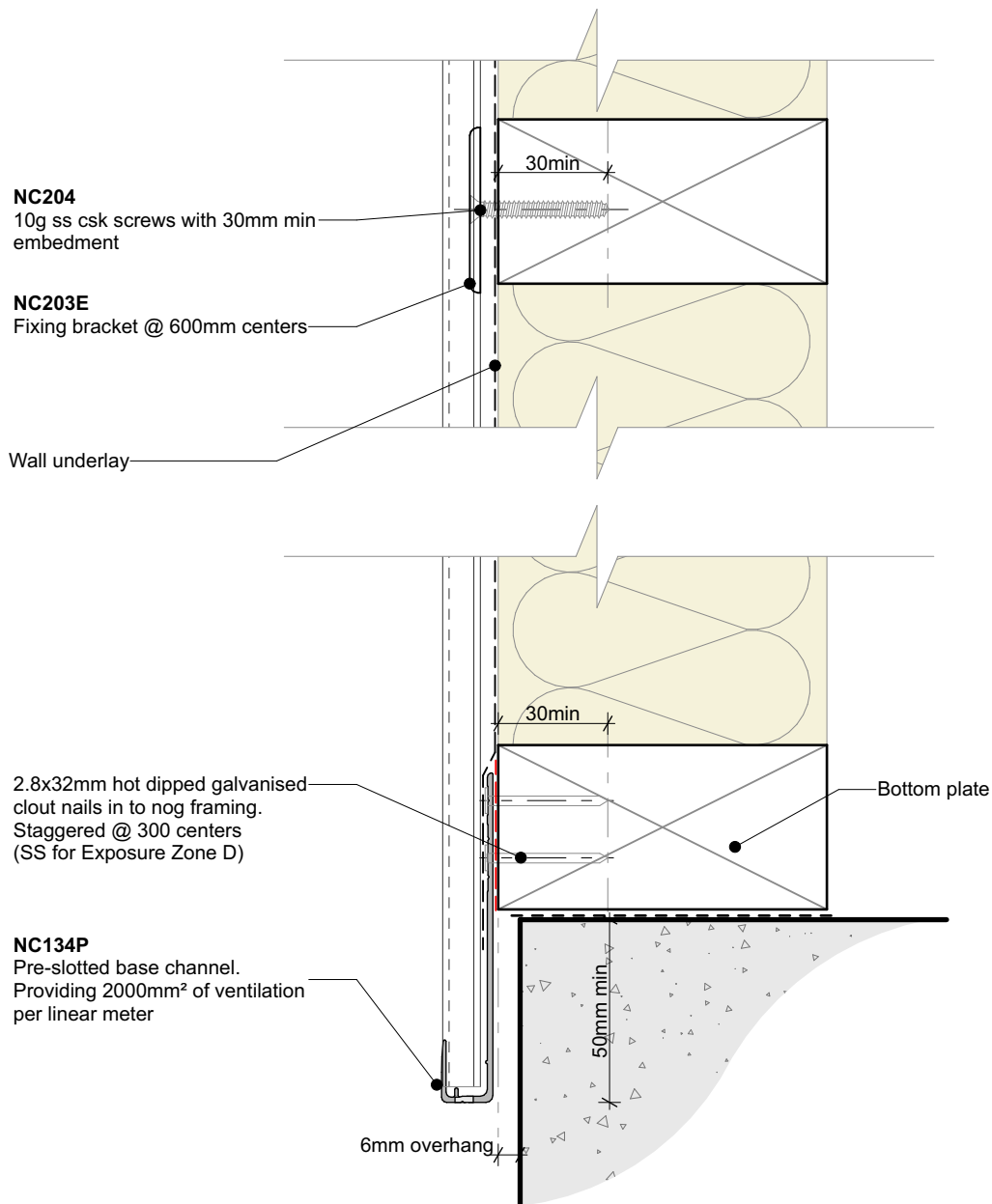




Nu-Wall Extruded Aluminium Cladding Installation CAD details - Vertical direct fix (VDF)

1	NW-VDF-001.02	Typical installation - Timber frame	25/2/2025
2	NW-VDF-002.02	Typical base channel fixing	25/2/2025
3	NW-VDF-003.02	Typical base channel over timber floor	25/2/2025
4	NW-VDF-004.02	Typical base channel over waterproof deck	25/2/2025
5	NW-VDF-004b.02	Typical base channel over concrete slab	25/2/2025
6	NW-VDF-005.02	Pre-Fabricated 90 deg base channel corner	25/2/2025
7	NW-VDF-006.02	Typical corner NC107X and NC109X assembly	25/2/2025
8	NW-VDF-007.02	Typical external 90 deg corner	25/2/2025
9	NW-VDF-008.02	Internal 90 deg corner using NC107X and NC109X	25/2/2025
10	NW-VDF-009.02	Typical inter storey or horizontal joint	25/2/2025
11	NW-VDF-010.02	Typical sill section - NC247 and NC248 assembly	25/2/2025
12	NW-VDF-011.02	Typical jamb section - NC247 and NC248 assembly	25/2/2025
13	NW-VDF-012.02	Typical jamb section with negative detail filler	25/2/2025
14	NW-VDF-013.02	Typical head section	25/2/2025
15	NW-VDF-014.02	Soaker installation to window jamb	25/2/2025
16	NW-VDF-015.02	Typical head flashing end detail	25/2/2025
17	NW-VDF-016a.03	Typical soffit trim	25/2/2025
18	NW-VDF-016b.03	Typical raking soffit	25/2/2025
19	NW-VDF-016c.03	Typical inverse raking soffit	25/2/2025
20	NW-VDF-017.02	Typical pipe penetration	25/2/2025
21	NW-VDF-018.02	Typical apron, roof to wall junction	25/2/2025
22	NW-VDF-019.02	Typical parapet to wall	25/2/2025
23	NW-VDF-020.02	Typical deck to wall junction	25/2/2025
24	NW-VDF-021.02	Typical roof and gutter to wall junction	25/2/2025
25	NW-VDF-022.02	Notching board around window jamb	25/2/2025
26	NW-VDF-023.03	Ripped board to end of wall junction	25/2/2025
27	NW-VDF-024.03	Typical Nu-Wall fascia to soffit	25/2/2025
28	NW-VDF-025.03	Typical Nu-Wall to fascia - soffit - wall (with alternative)	25/2/2025
29	NW-VDF-026.03	Typical garage door head - jamb (Timber reveal)	25/2/2025
30	NW-VDF-026b.03	Typical garage door head - jamb (Nu-Wall Reveal Profile)	25/2/2025
31	NW-VDF-027.03	Typical Nu-Wall to brick internal corner	25/2/2025
32	NW-VDF-028.03	Typical Nu-Wall to brick external corner	25/2/2025
33	NW-VDF-029.02	Typical Nu-Wall to brick horizontal junction	25/2/2025
34	NW-VDF-030.03	Typical Nu-Wall to brick vertical junction	25/2/2025
35	NW-VDF-031.03	Typical Nu-Wall to concrete masonry vertical junction	25/2/2025
36	NW-VDF-032.03	Typical Nu-Wall to concrete masonry external corner	25/2/2025
37	NW-VDF-033.03	Typical Nu-Wall to concrete masonry internal corner	25/2/2025



Note:
• Standard fixing specification. May vary depending on wind load



nu-wall
CLADDING

Nu-Wall cladding vertical direct fix Typical installation - Timber frame

© 2021 copyright in this document is the property of Nu-Wall Aluminium Cladding Limited. All rights reserved. Nu-Wall is a registered trademark of Aluminium Product Brands NZ Limited

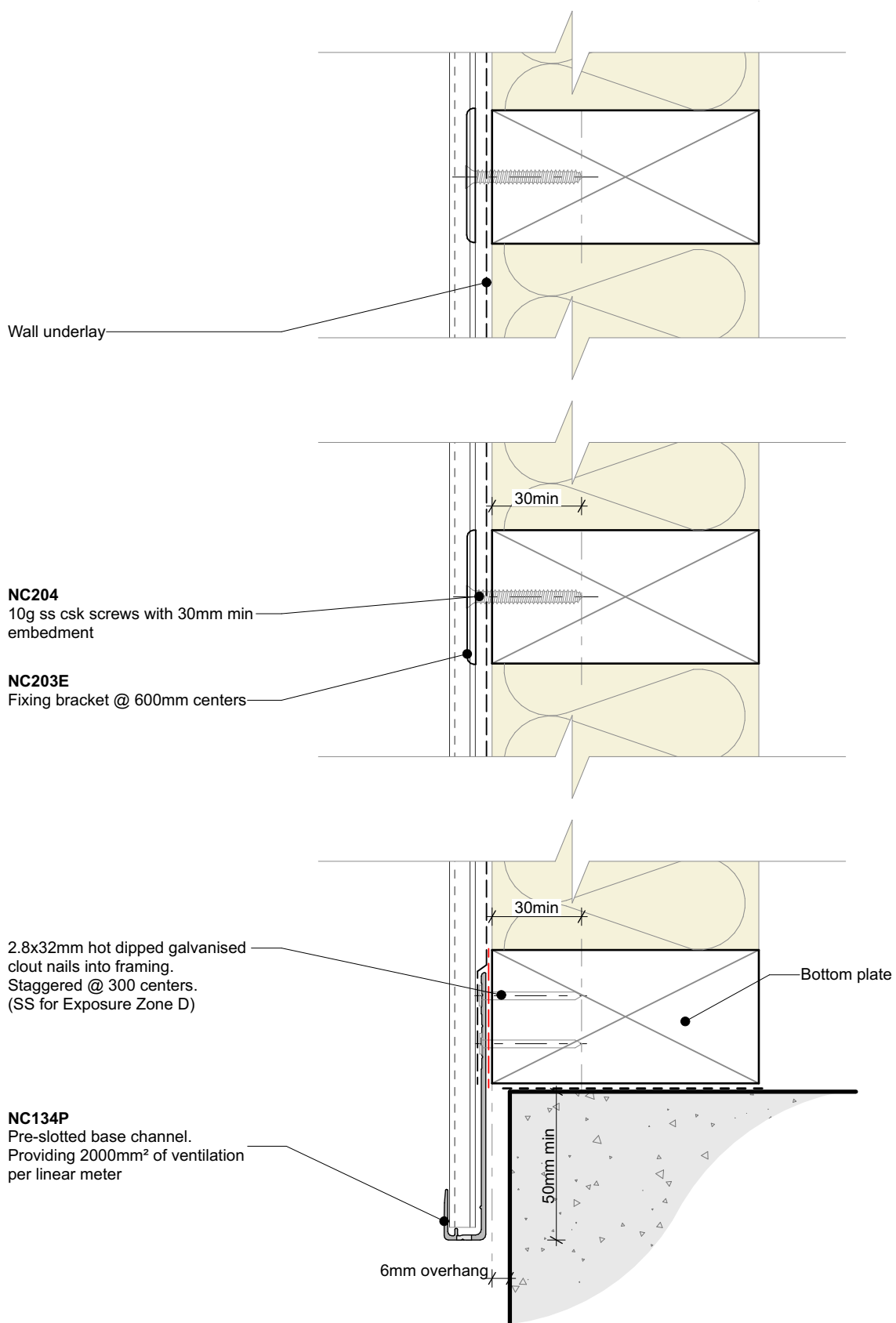
NW-VDF-001.02

Drawn by: Nu-Wall

Date: 25/02/2025

Checked by: RL, GT

Scale: 1:2 @ A4



Note:

- Standard fixing specification. May vary depending on wind load



nu-wall
CLADDING

Nu-Wall cladding vertical direct fix
Typical base channel fixing

© 2021 copyright in this document is the property of Nu-Wall Aluminium Cladding Limited. All rights reserved. Nu-Wall is a registered trademark of Aluminium Product Brands NZ Limited

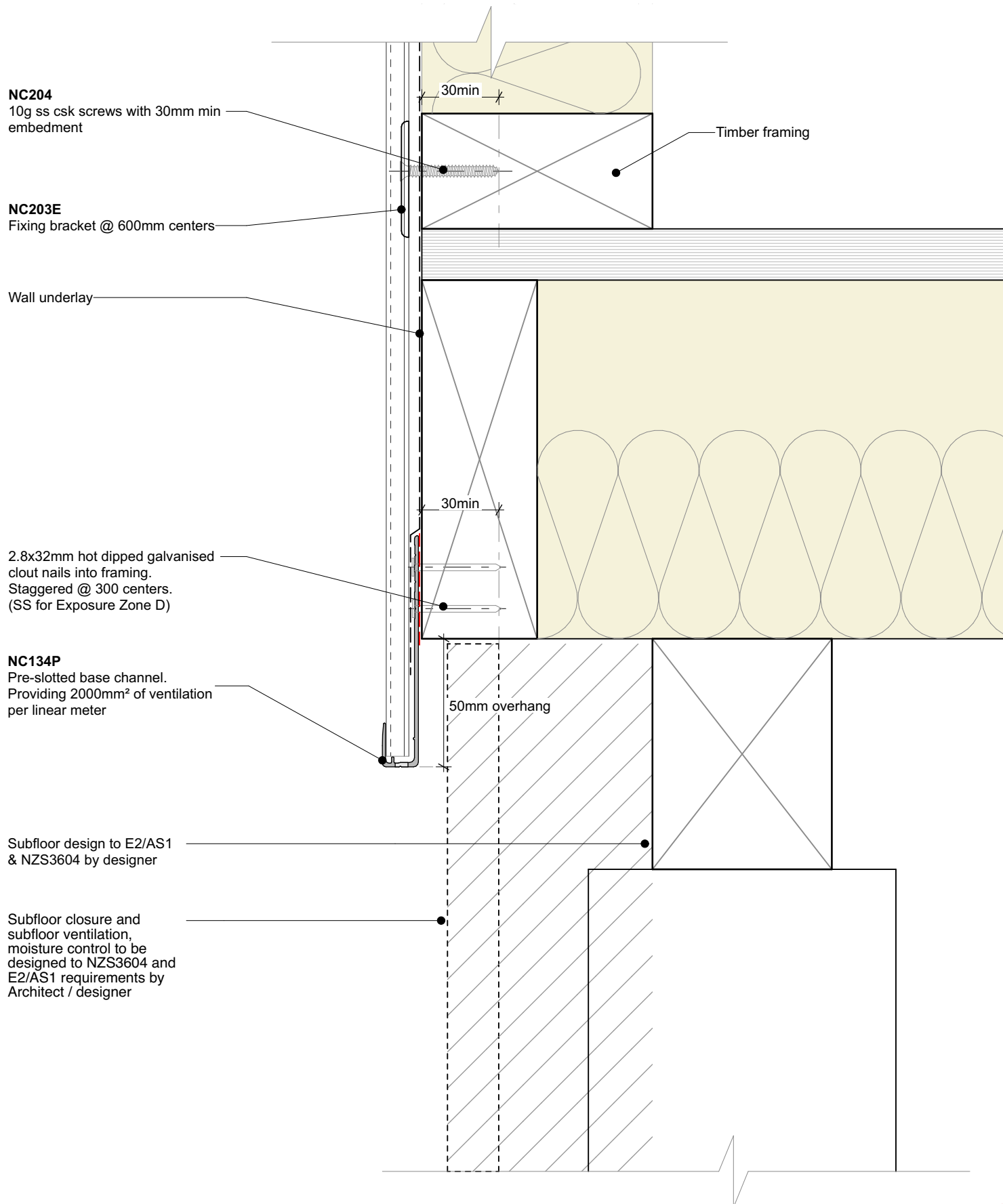
NW-VDF-002.02

Drawn by: Nu-Wall

Date: 25/02/2025

Checked by: RL, GT

Scale: 1:2 @ A4



Note:
 • Standard fixing specification. May vary depending on wind load



	Nu-Wall cladding vertical direct fix		NW-VDF-003.02	
	Typical base channel over timber floor		Drawn by: Nu-Wall	Date: 25/02/2025
	© 2021 copyright in this document is the property of Nu-Wall Aluminium Cladding Limited. All rights reserved. Nu-Wall is a registered trademark of Aluminium Product Brands NZ Limited		Checked by: RL, GT	Scale: 1:2 @ A4

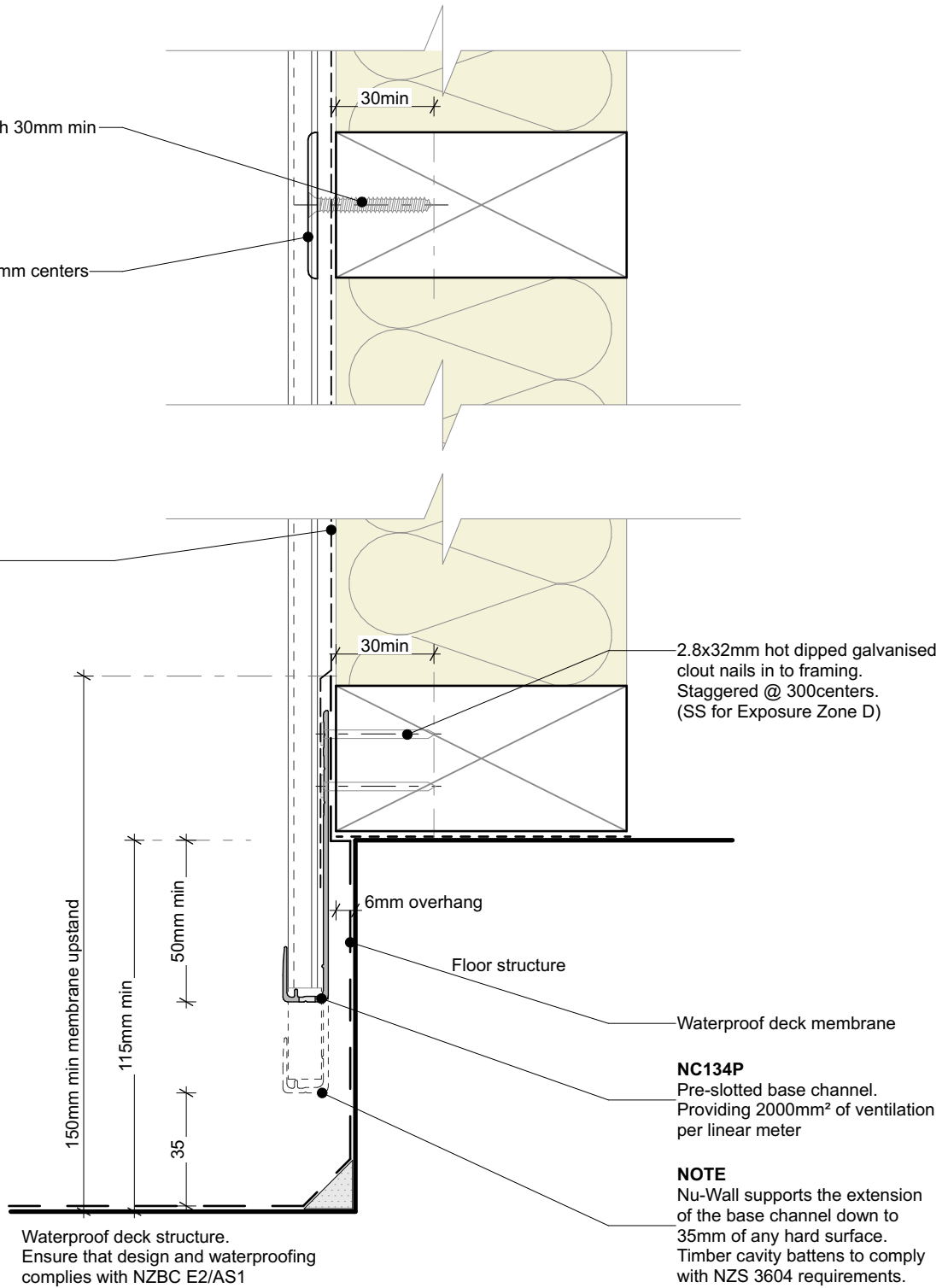
NC204

10g ss csk screws with 30mm min
embedment

NC203E

Fixing bracket @ 600mm centers

Wall underlay

**Note:**

- Standard fixing specification. May vary depending on wind load



nu-wall
CLADDING

Nu-Wall cladding vertical direct fix Typical base channel over waterproof deck

© 2021 copyright in this document is the property of Nu-Wall Aluminium Cladding Limited. All rights reserved. Nu-Wall is a registered trademark of Aluminium Product Brands NZ Limited

NW-VDF-004.02

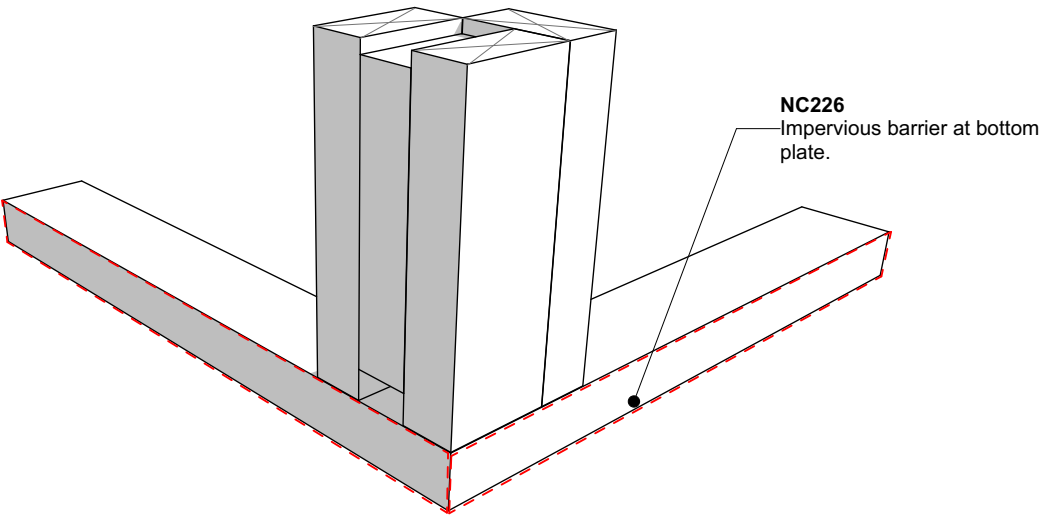
Drawn by: Nu-Wall

Date: 25/02/2025

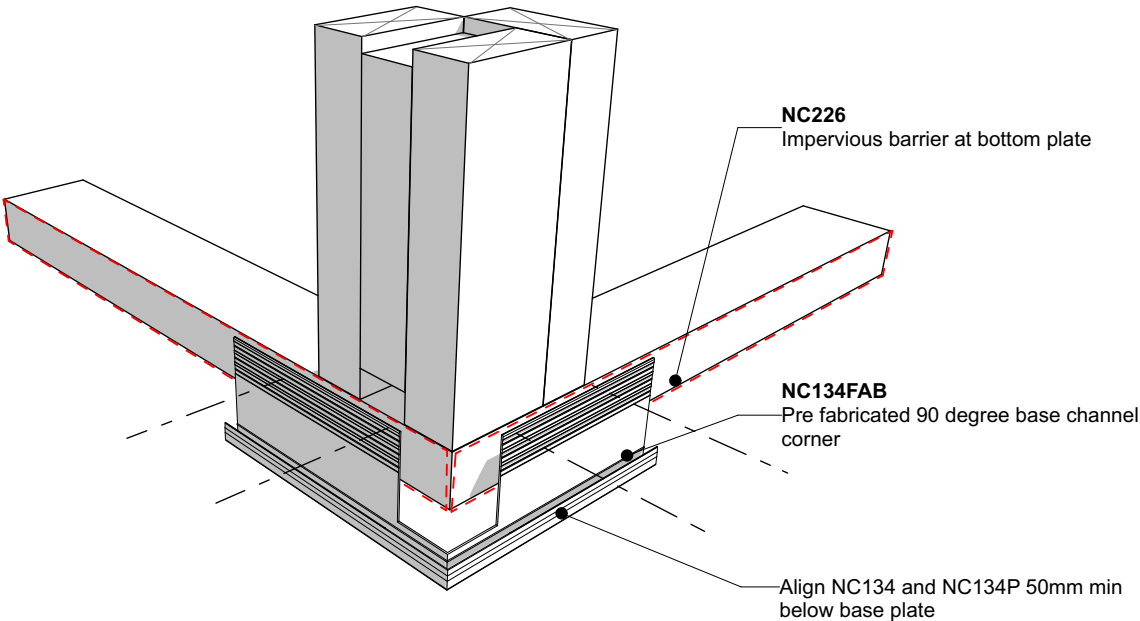
Checked by: RL, GT

Scale: 1:2 @ A4

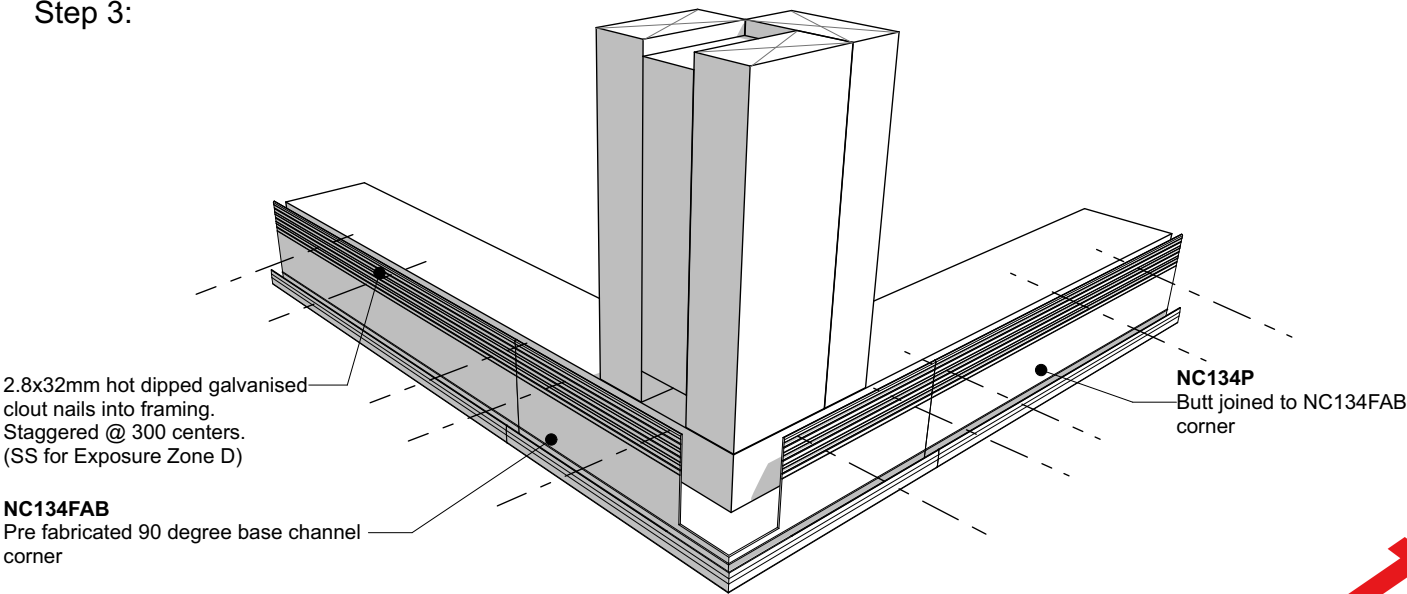
Step 1:



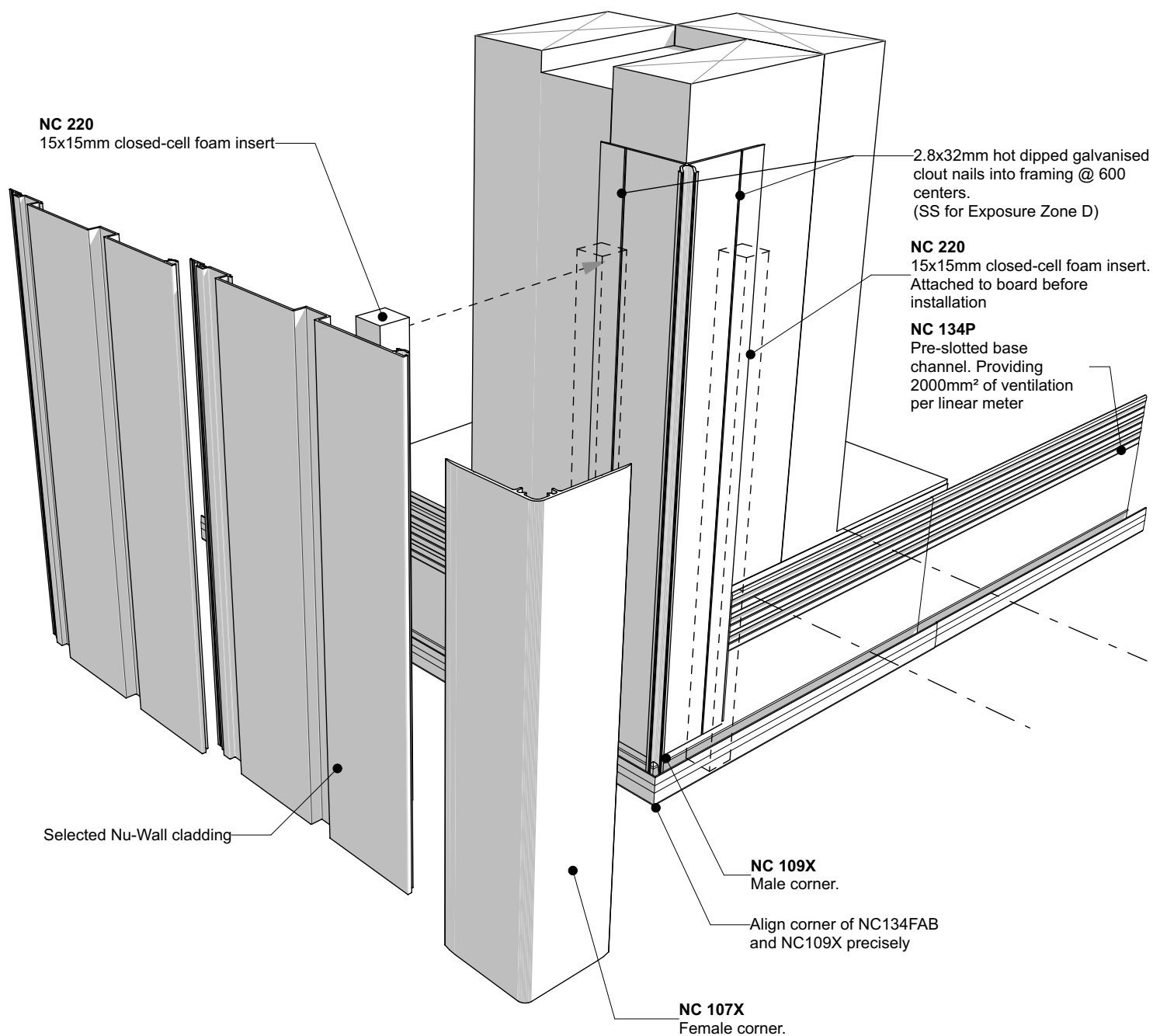
Step 2:



Step 3:



	Nu-Wall cladding vertical direct fix		NW-VDF-005.02	
	Pre-Fabricated 90 deg base channel corner		Drawn by: Nu-Wall	Date: 25/02/2025
	© 2021 copyright in this document is the property of Nu-Wall Aluminium Cladding Limited. All rights reserved. Nu-Wall is a registered trademark of Aluminium Product Brands NZ Limited		Checked by: RL, GT	Scale: NTS



nu-wall
CLADDING

Nu-Wall cladding vertical direct fix Typical corner NC107X and NC109X assembly

© 2021 copyright in this document is the property of Nu-Wall Aluminium Cladding Limited. All rights reserved. Nu-Wall is a registered trademark of Aluminium Product Brands NZ Limited

NW-VDF-006.02

Drawn by: Nu-Wall

Date: 25/02/2025

Checked by: RL, GT

Scale: NTS

2.8x32mm hot dipped galvanised clout nails @ 600 centers.
(SS for Exposure Zone D)

NC203E
fixing clip @ 600 centers

Last board ripped to fit

NC 204
10g x 16mm csk Tek screw @ 600 centers through anti-crush packer (by others)

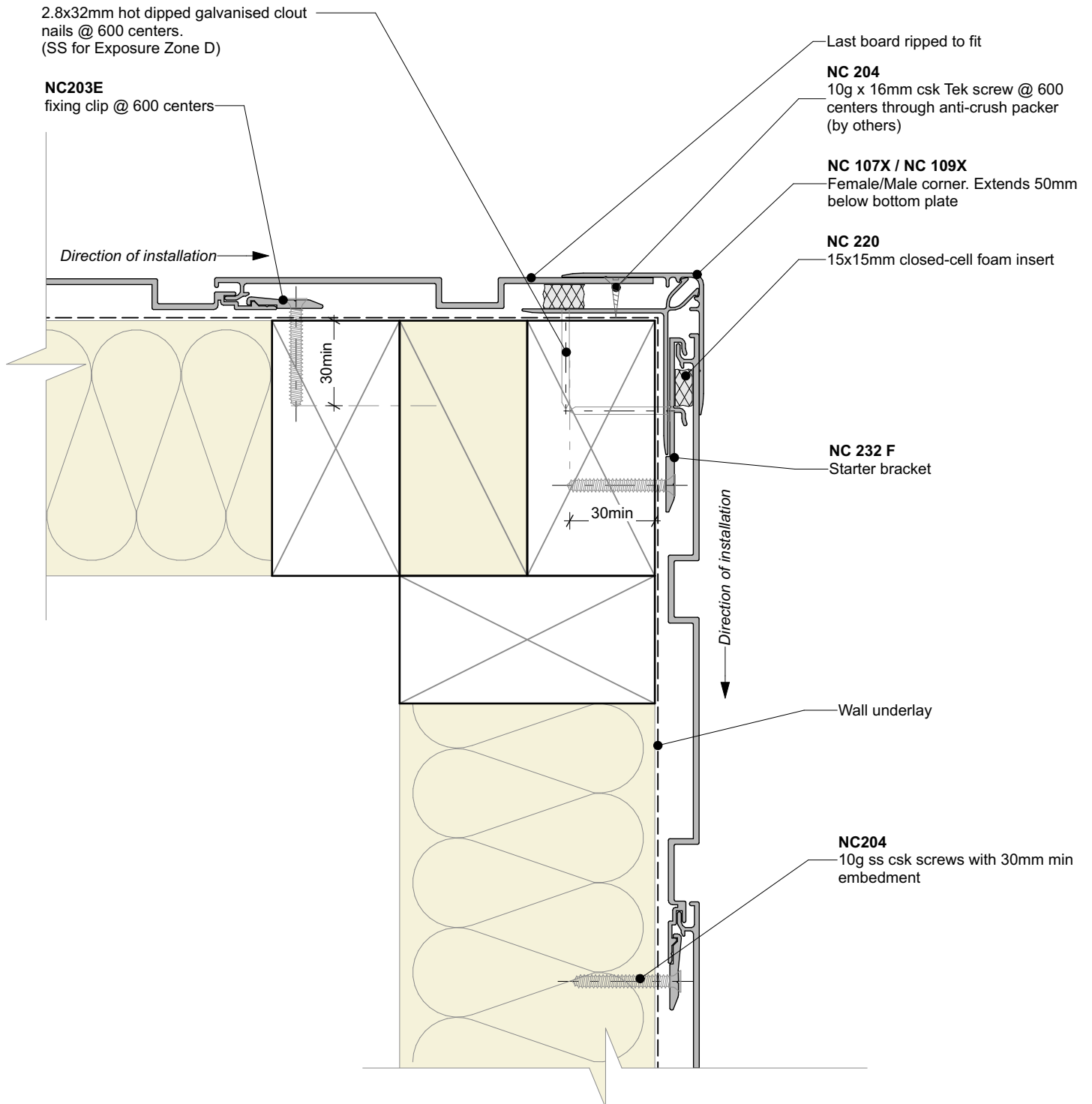
NC 107X / NC 109X
Female/Male corner. Extends 50mm below bottom plate

NC 220
15x15mm closed-cell foam insert

NC 232 F
Starter bracket

Wall underlay

NC204
10g ss csk screws with 30mm min embedment



nu-wall
CLADDING

Nu-Wall cladding vertical direct fix Typical external 90 deg corner

© 2021 copyright in this document is the property of Nu-Wall Aluminium Cladding Limited. All rights reserved. Nu-Wall is a registered trademark of Aluminium Product Brands NZ Limited

NW-VDF-007.02

Drawn by: Nu-Wall

Date: 25/02/2025

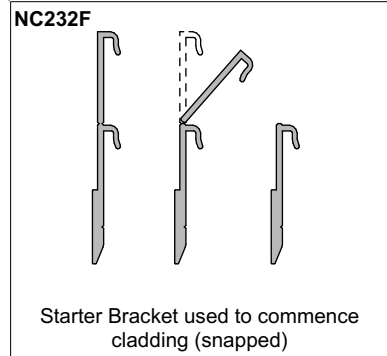
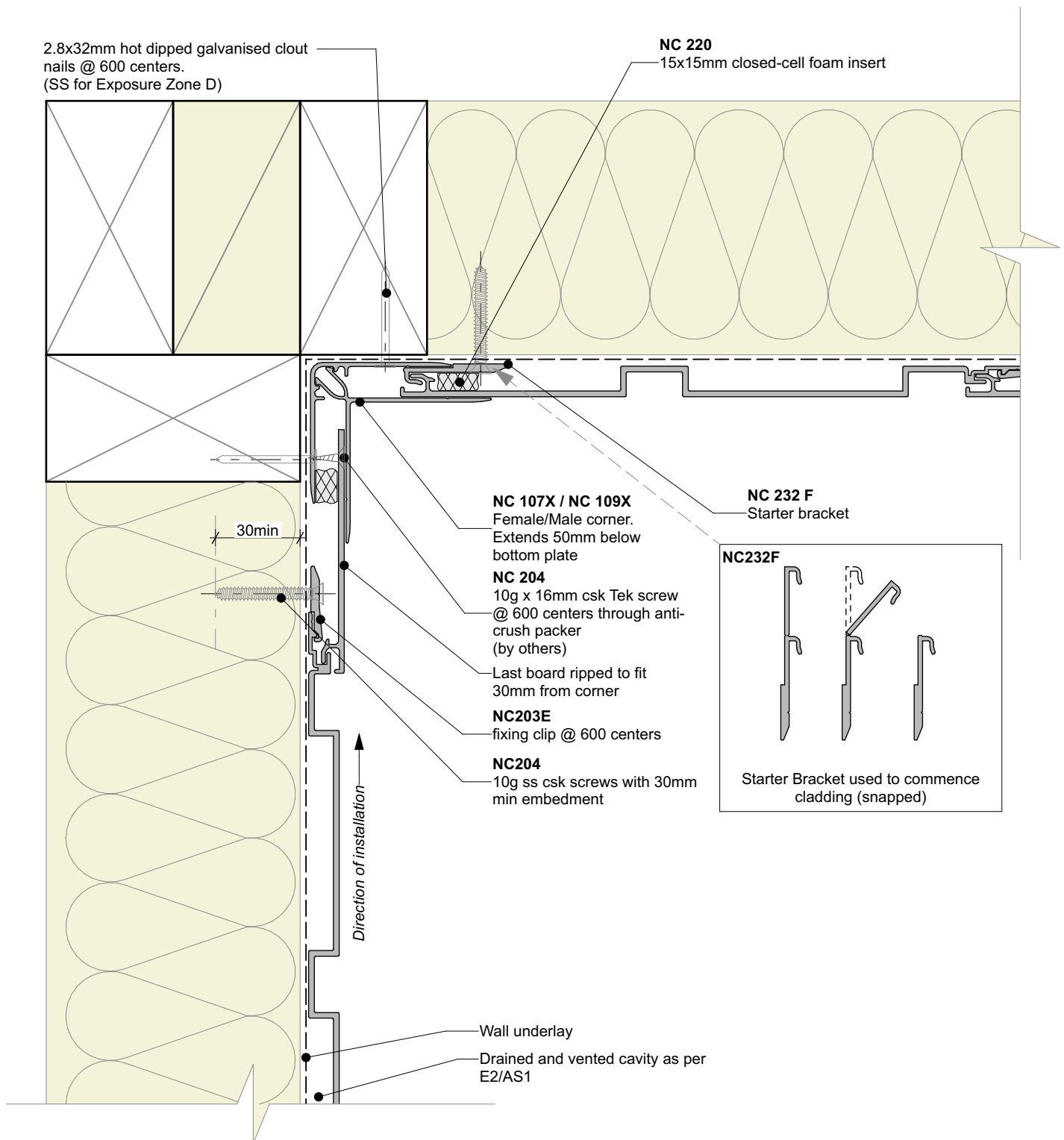
Checked by: RL, GT

Scale: 1:2 @ A4

2.8x32mm hot dipped galvanised clout nails @ 600 centers.
(SS for Exposure Zone D)

NC 220

15x15mm closed-cell foam insert



nu-wall
CLADDING

Nu-Wall cladding vertical direct fix Internal 90 deg corner using NC107X and NC109X

© 2021 copyright in this document is the property of Nu-Wall Aluminium Cladding Limited. All rights reserved. Nu-Wall is a registered trademark of Aluminium Product Brands NZ Limited

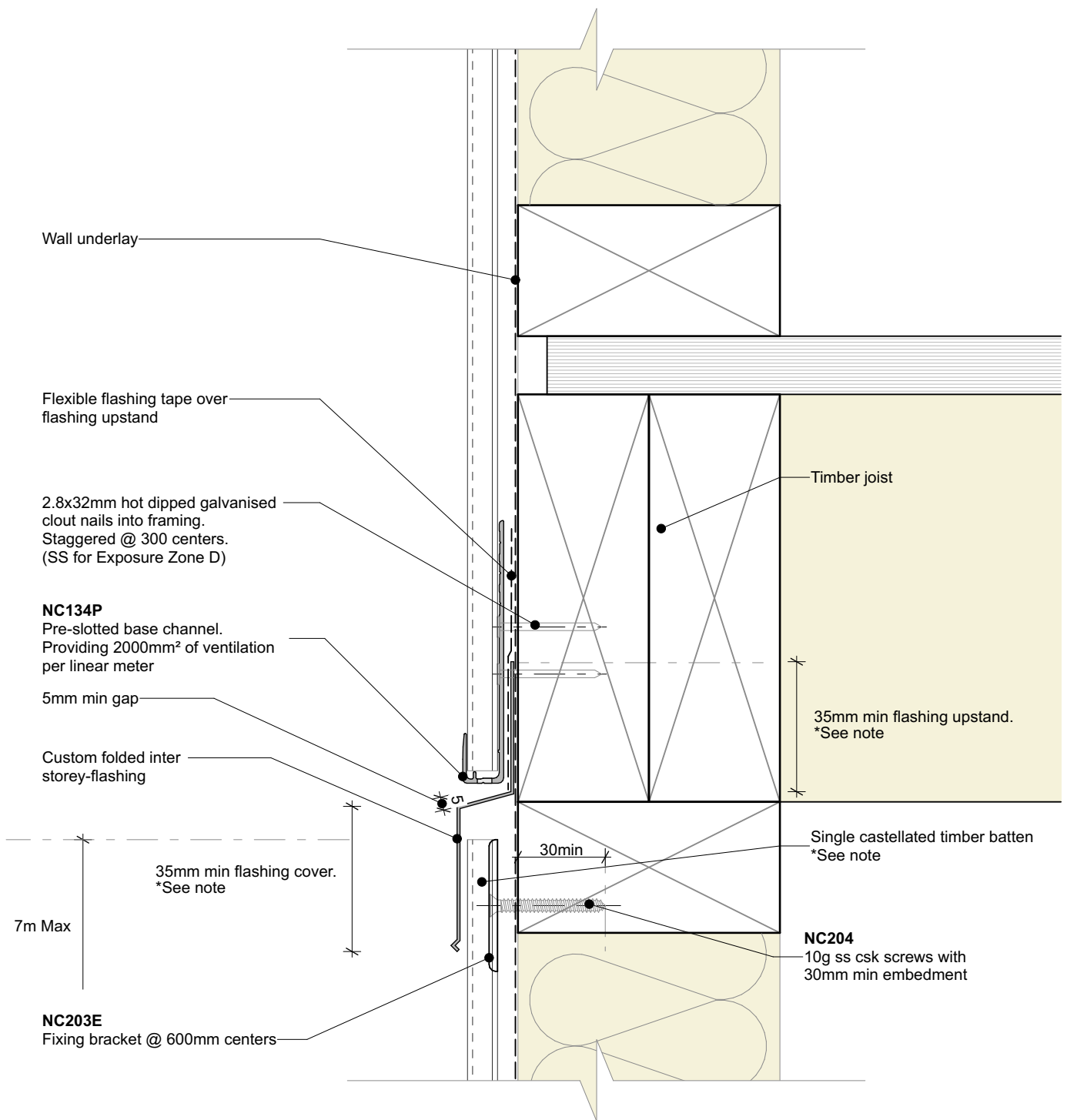
NW-VDF-008.02

Drawn by: Nu-Wall

Date: 25/02/2025

Checked by: RL, GT

Scale: 1:2 @ A4



General note:

- This detail is to be used to limit continuous cavities to the lesser of two storeys or 7meters. Refer E2/AS1 Table 7 for flashing cover requirements

Inter storey flashing note:

- Nu-Wall offers pre-fabricated internal, external and stop-end sections. Contact Nu-Wall for assistance



nu-wall
CLADDING

Nu-Wall cladding vertical direct fix
Typical inter storey or horizontal joint

© 2021 copyright in this document is the property of Nu-Wall Aluminium Cladding Limited. All rights reserved. Nu-Wall is a registered trademark of Aluminium Product Brands NZ Limited

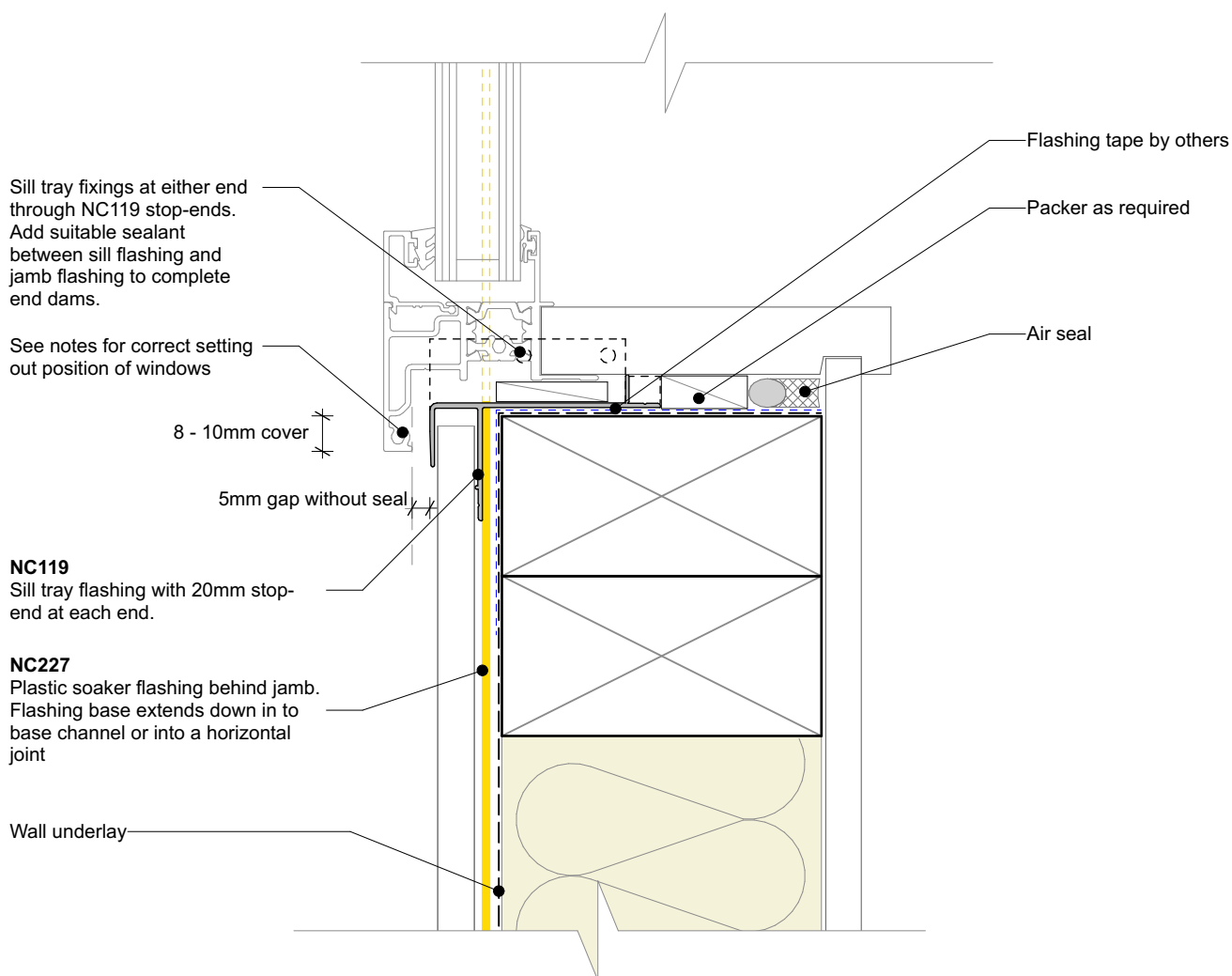
NW-VDF-009.02

Drawn by: Nu-Wall

Date: 25/02/2025

Checked by: RL, GT

Scale: 1:2 @ A4



General note:

- Cladding fixings omitted for clarity

Window setting out notes: (from face of air barrier)

- 24mm from wall underlay to window fin



nu-wall
CLADDING

Nu-Wall cladding vertical direct fix
Typical sill section - NC247 and NC248 assembly

© 2021 copyright in this document is the property of Nu-Wall Aluminium Cladding Limited. All rights reserved. Nu-Wall is a registered trademark of Aluminium Product Brands NZ Limited

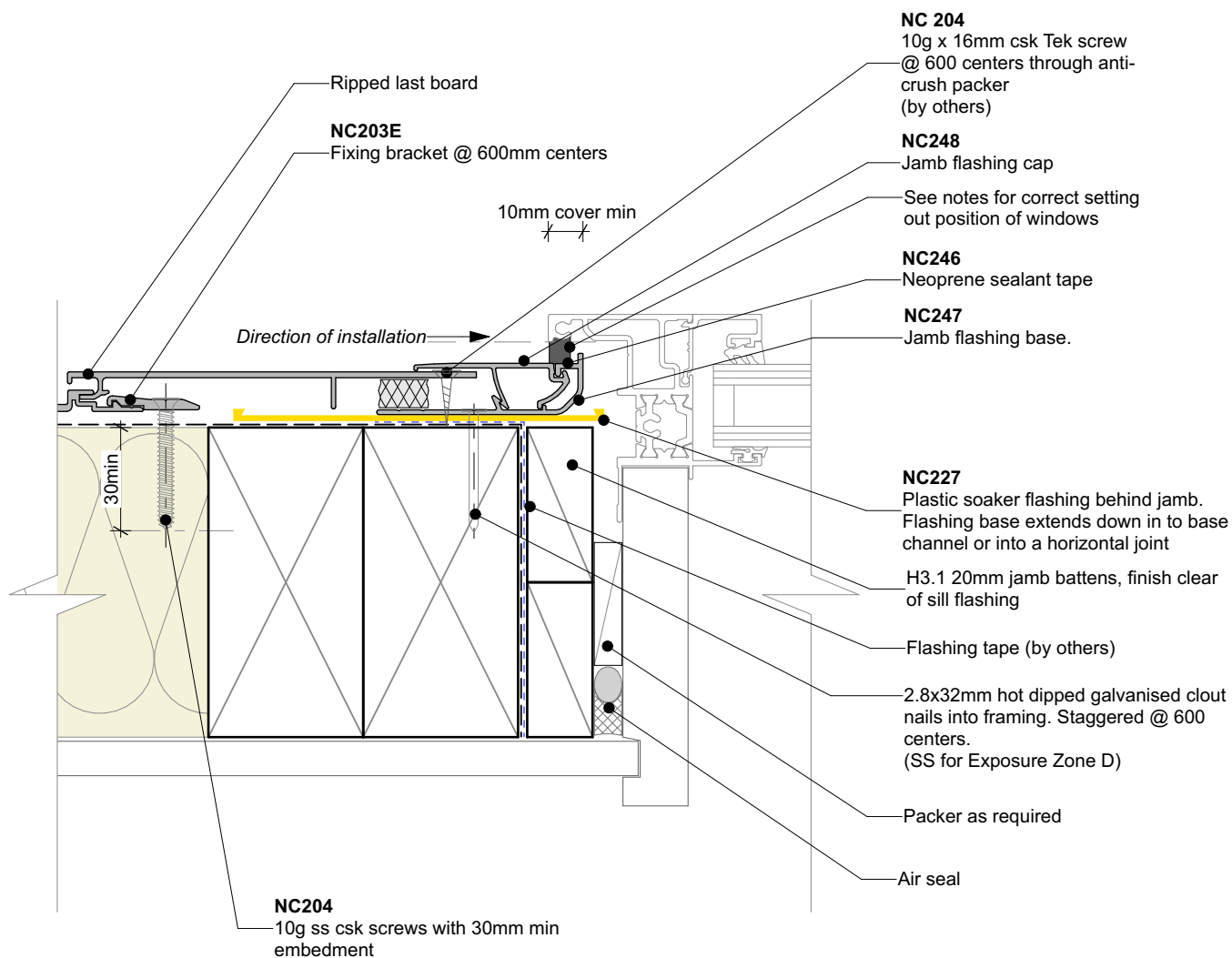
NW-VDF-010.02

Drawn by: Nu-Wall

Date: 25/02/2025

Checked by: RL, GT

Scale: 1:2 @ A4



General note:

- Cladding fixings omitted for clarity

Window setting out notes: (from face of air barrier)

- 24mm from underlay to window fin



nu-wall
CLADDING

Nu-Wall cladding vertical direct fix

Typical jamb section - NC247 and NC248 assembly

© 2021 copyright in this document is the property of Nu-Wall Aluminium Cladding Limited. All rights reserved. Nu-Wall is a registered trademark of Aluminium Product Brands NZ Limited

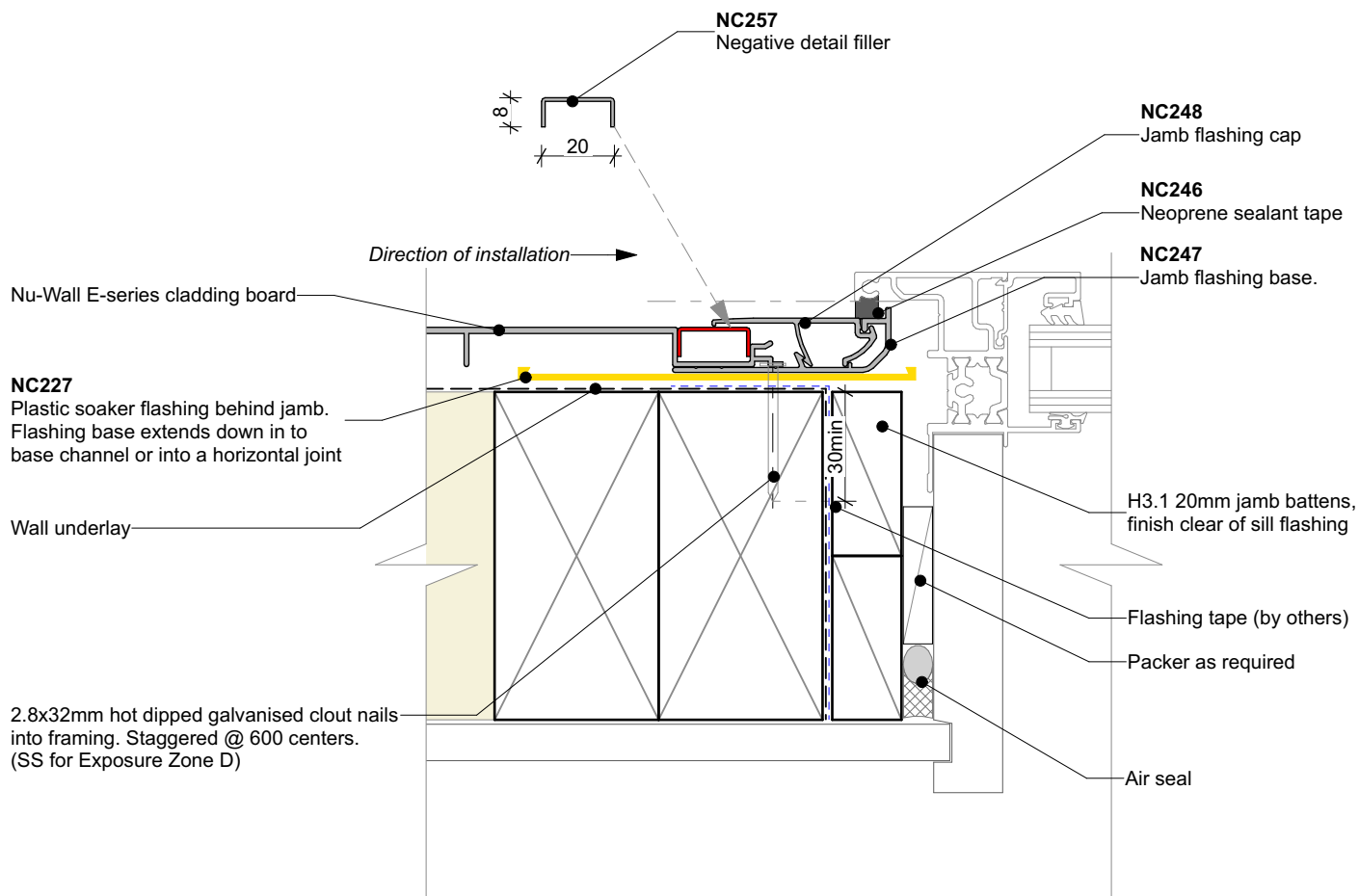
NW-VDF-011.02

Drawn by: Nu-Wall

Date: 25/02/2025

Checked by: RL, GT

Scale: 1:2 @ A4



General note:

- Cladding fixings omitted for clarity

Window setting out notes: (from face of air barrier)

- 24mm from underlay to window fin



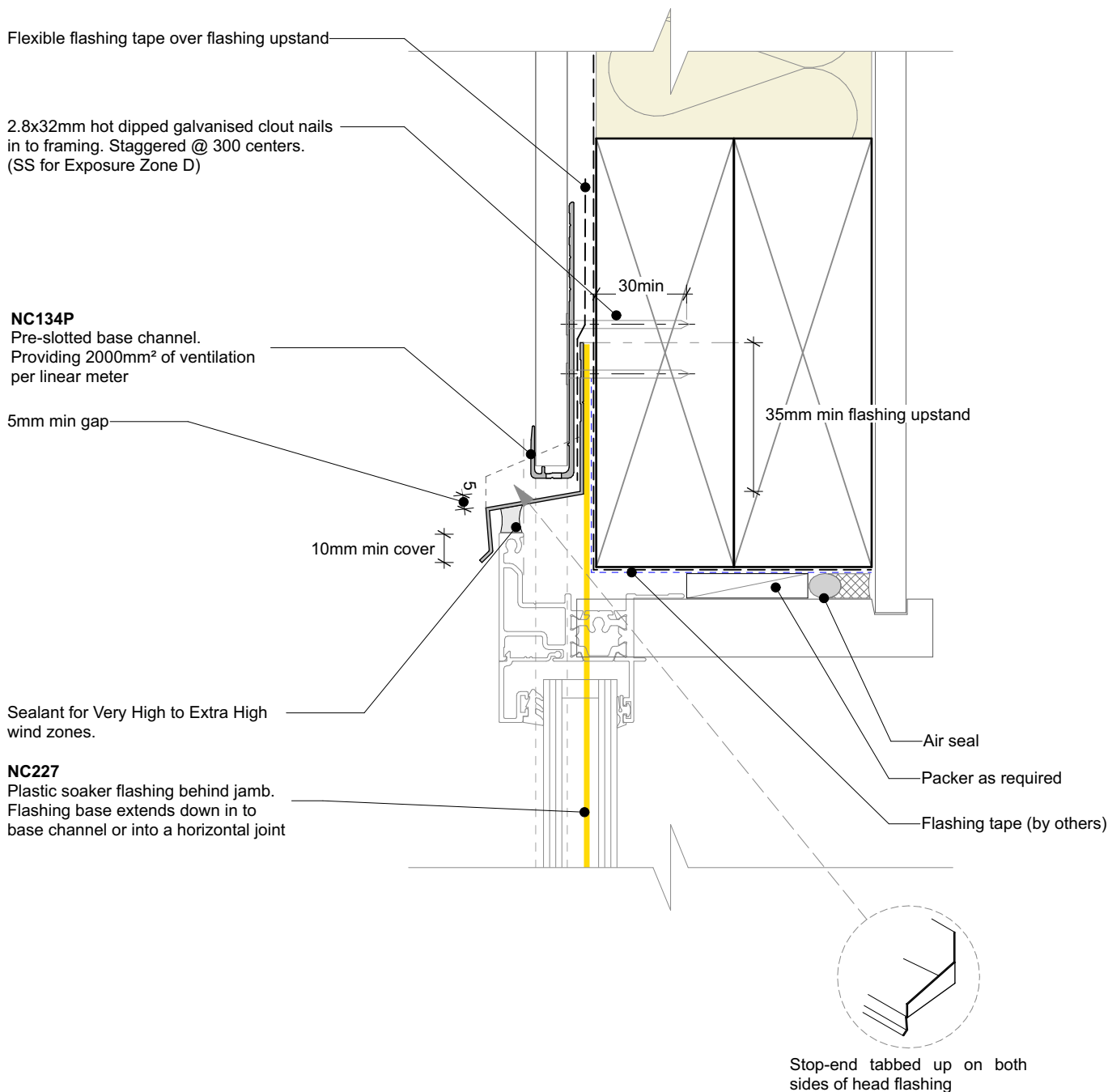
nu-wall
CLADDING

Nu-Wall cladding vertical direct fix
Typical jamb section with negative detail filler

© 2021 copyright in this document is the property of Nu-Wall Aluminium Cladding Limited. All rights reserved. Nu-Wall is a registered trademark of Aluminium Product Brands NZ Limited

NW-VDF-012.02

Drawn by: Nu-Wall	Date: 25/02/2025
Checked by: RL, GT	Scale: 1:2 @ A4



General note:

- Cladding fixings omitted for clarity

Window setting out notes: (from face of air barrier)

- 24mm from underlay to window fin



Nu-Wall cladding vertical direct fix
Typical head section

© 2021 copyright in this document is the property of Nu-Wall Aluminium Cladding Limited. All rights reserved. Nu-Wall is a registered trademark of Aluminium Product Brands NZ Limited

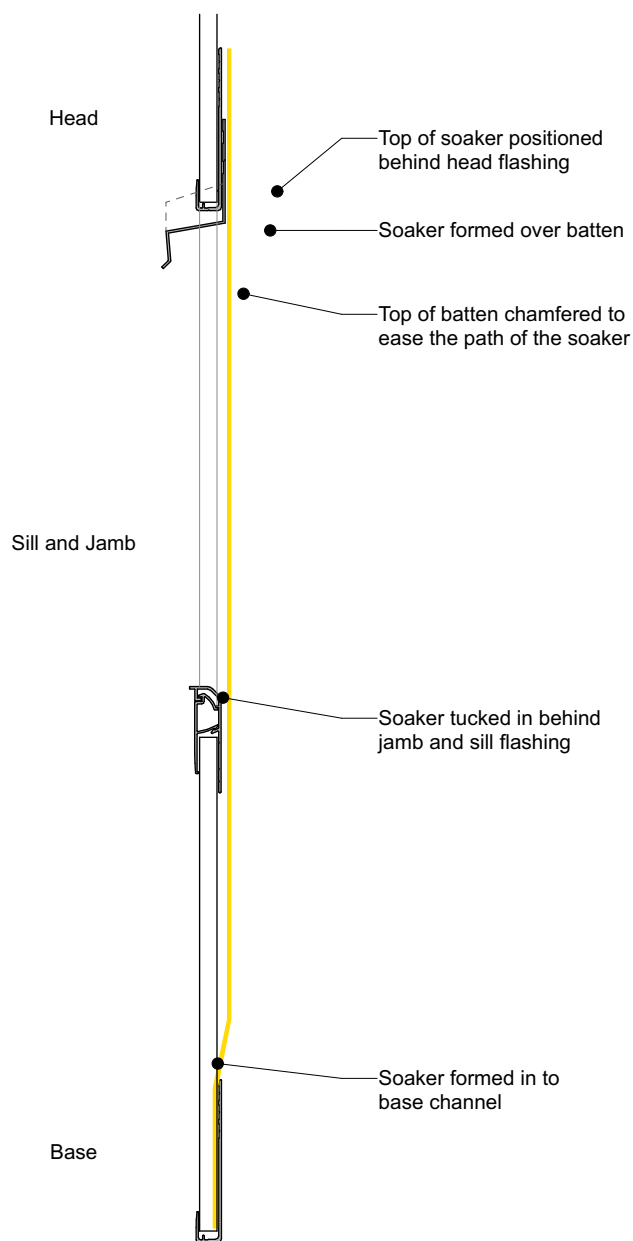
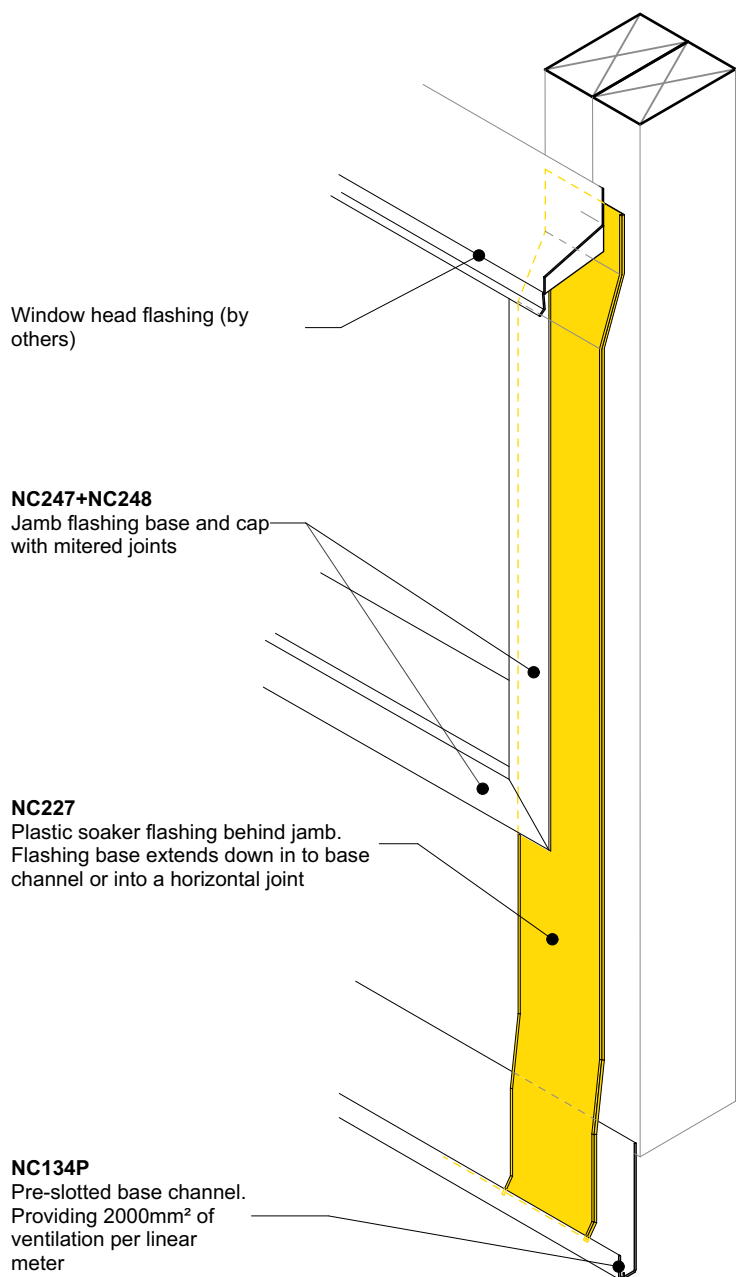
NW-VDF-013.02

Drawn by: Nu-Wall

Date: 25/02/2025

Checked by: RL, GT

Scale: 1:2 @ A4



Nu-Wall cladding vertical direct fix Soaker installation to window jamb

© 2021 copyright in this document is the property of Nu-Wall Aluminium Cladding Limited. All rights reserved. Nu-Wall is a registered trademark of Aluminium Product Brands NZ Limited

NW-VDF-014.02

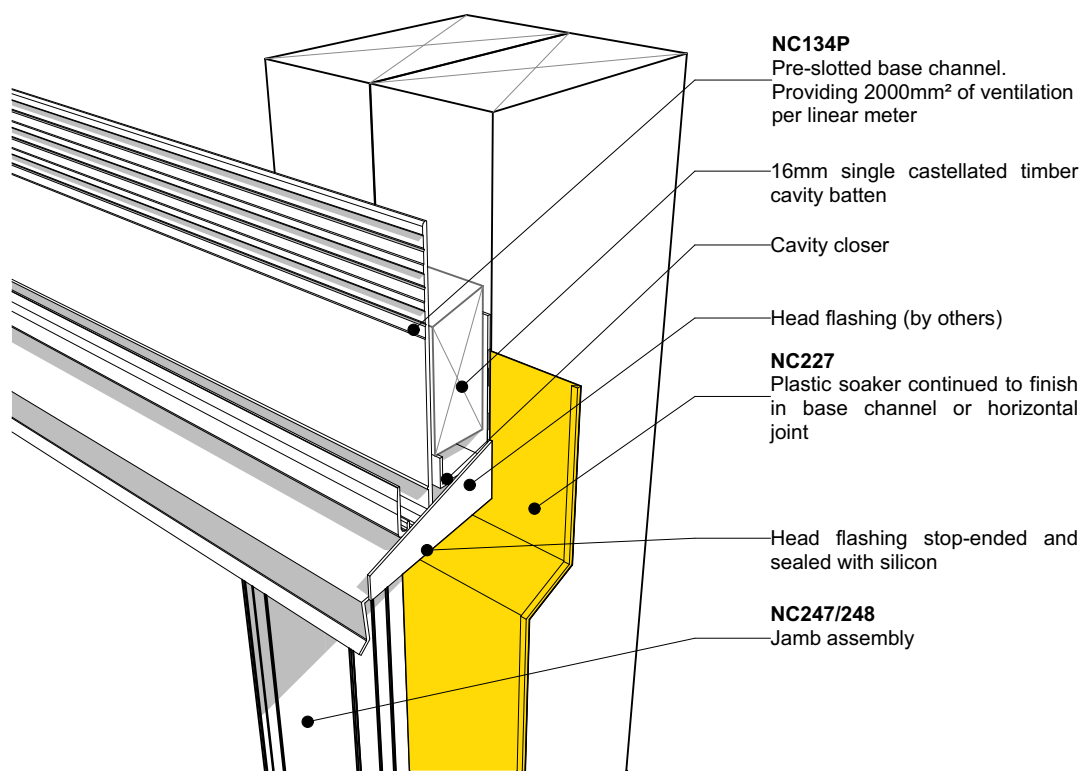
Drawn by: Nu-Wall

Date: 25/02/2025

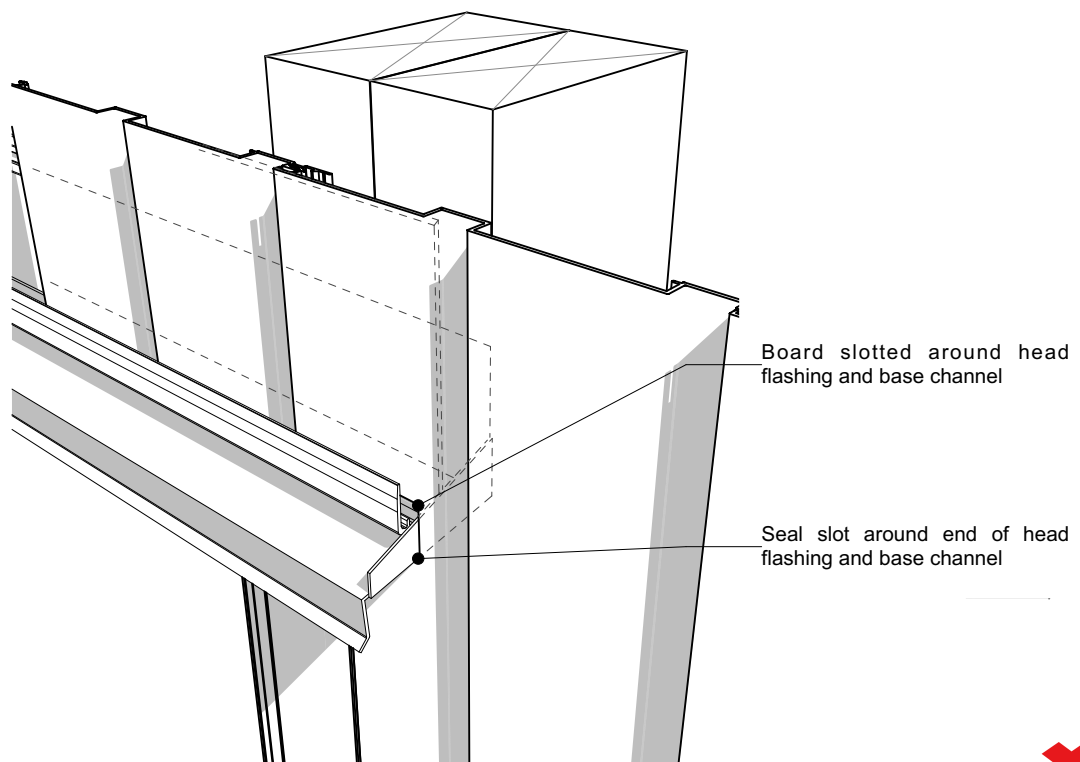
Checked by: RL, GT

Scale: 1:2 @ A4

Junction prior to cladding around window head



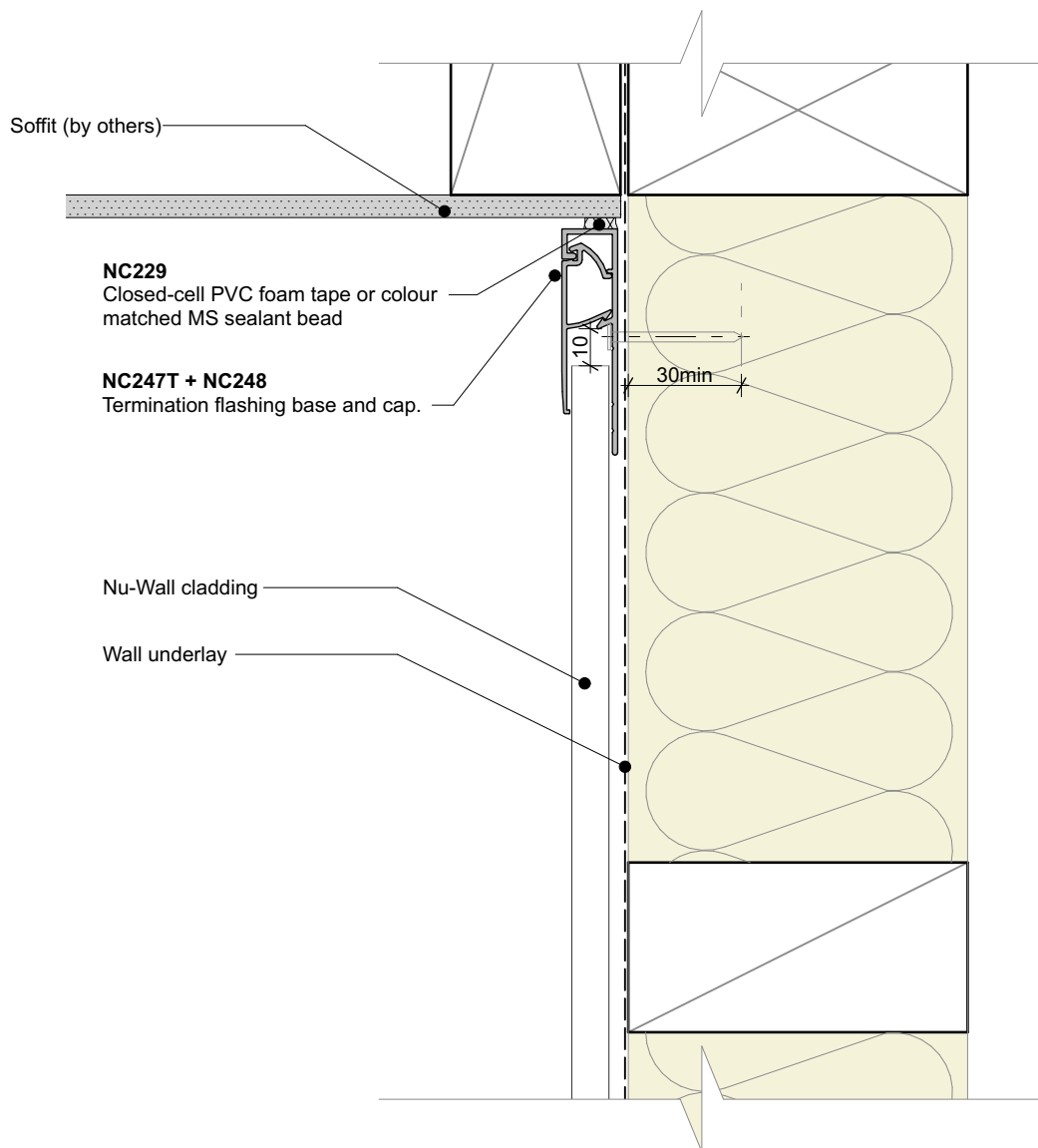
Junction after cladding around window head



Nu-Wall cladding vertical direct fix
Typical head flashing end detail

© 2021 copyright in this document is the property of Nu-Wall Aluminium Cladding Limited. All rights reserved. Nu-Wall is a registered trademark of Aluminium Product Brands NZ Limited

NW-VDF-015.02	
Drawn by: Nu-Wall	Date: 25/02/2025
Checked by: RL, GT	Scale: NTS



General note:

- Cladding fixings omitted for clarity



nu-wall
CLADDING

**Nu-Wall cladding vertical direct fix
Typical soffit trim**

© 2021 copyright in this document is the property of Nu-Wall Aluminium Cladding Limited. All rights reserved. Nu-Wall is a registered trademark of Aluminium Product Brands NZ Limited

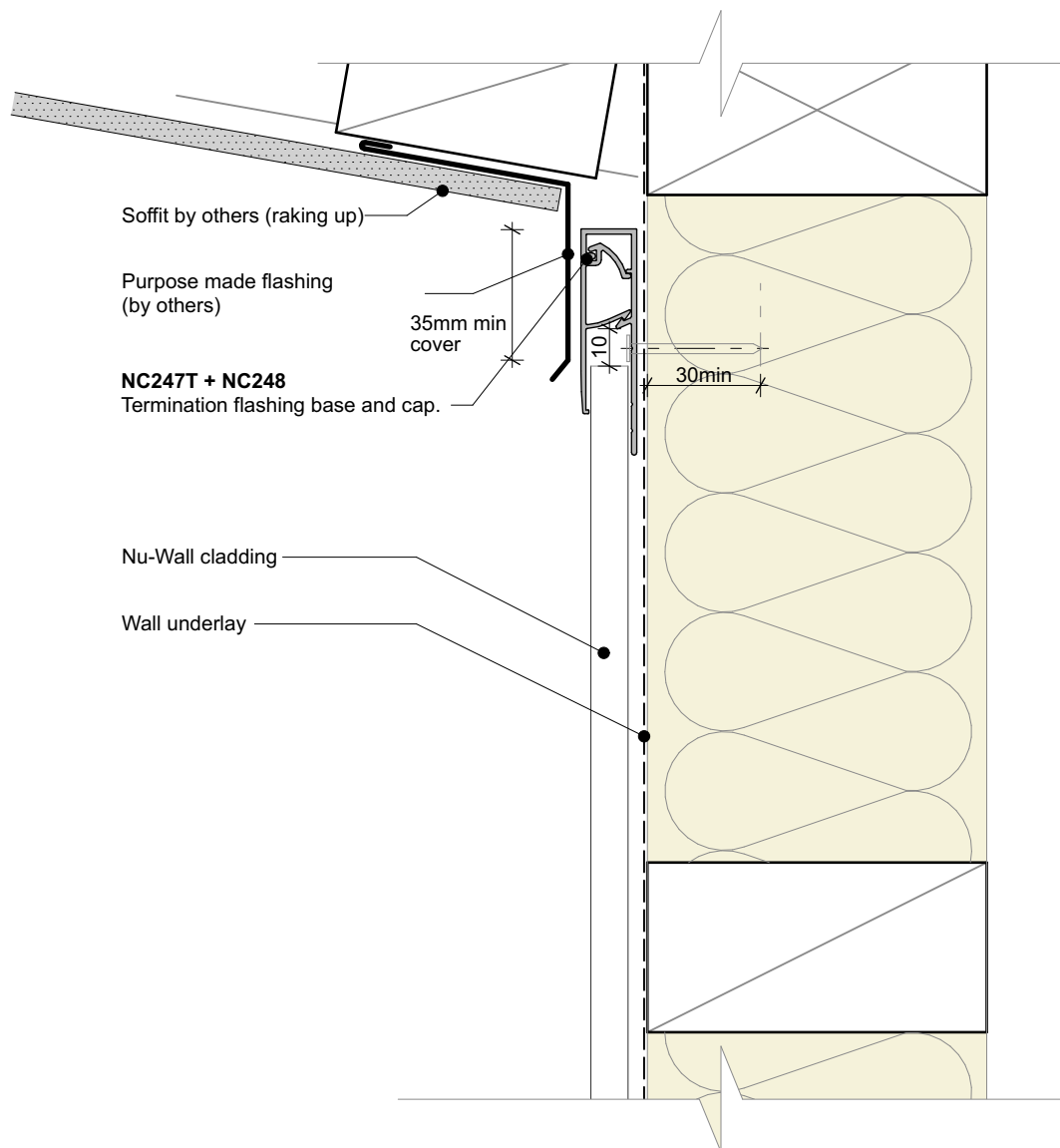
NW-VDF-016a.03

Drawn by: Nu-Wall

Date: 25/02/2025

Checked by: RL, GT


Scale: 1:2 @ A4

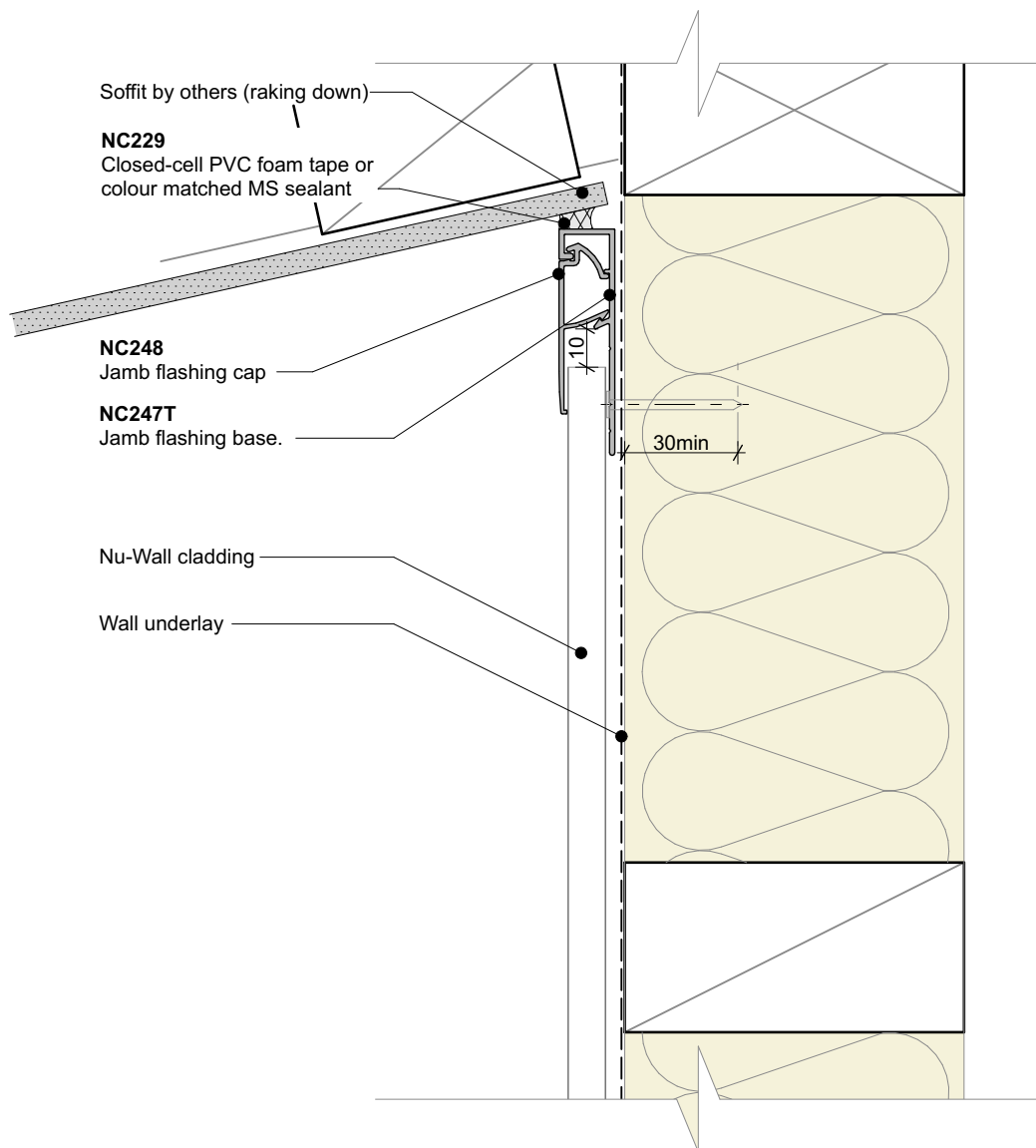


General note:

- Cladding fixings omitted for clarity



	Nu-Wall cladding vertical direct fix		NW-VDF-016b.03	
	Typical raking soffit		Drawn by: Nu-Wall	Date: 25/02/2025
	© 2021 copyright in this document is the property of Nu-Wall Aluminium Cladding Limited. All rights reserved. Nu-Wall is a registered trademark of Aluminium Product Brands NZ Limited		Checked by: RL, GT	Scale: 1:2 @ A4



General note:

- Cladding fixings omitted for clarity



nu-wall
CLADDING

Nu-Wall cladding vertical direct fix
Typical inverse raking soffit

© 2021 copyright in this document is the property of Nu-Wall Aluminium Cladding Limited. All rights reserved. Nu-Wall is a registered trademark of Aluminium Product Brands NZ Limited

NW-VDF-016c.03

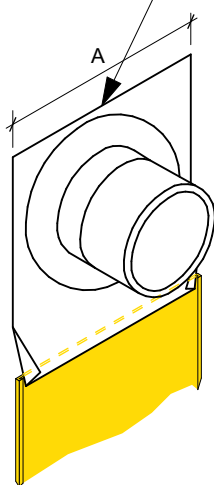
Drawn by: Nu-Wall

Date: 25/02/2025

Checked by: RL, GT

Scale: 1:2 @ A4

A = Pipe diameter
+ 100mm



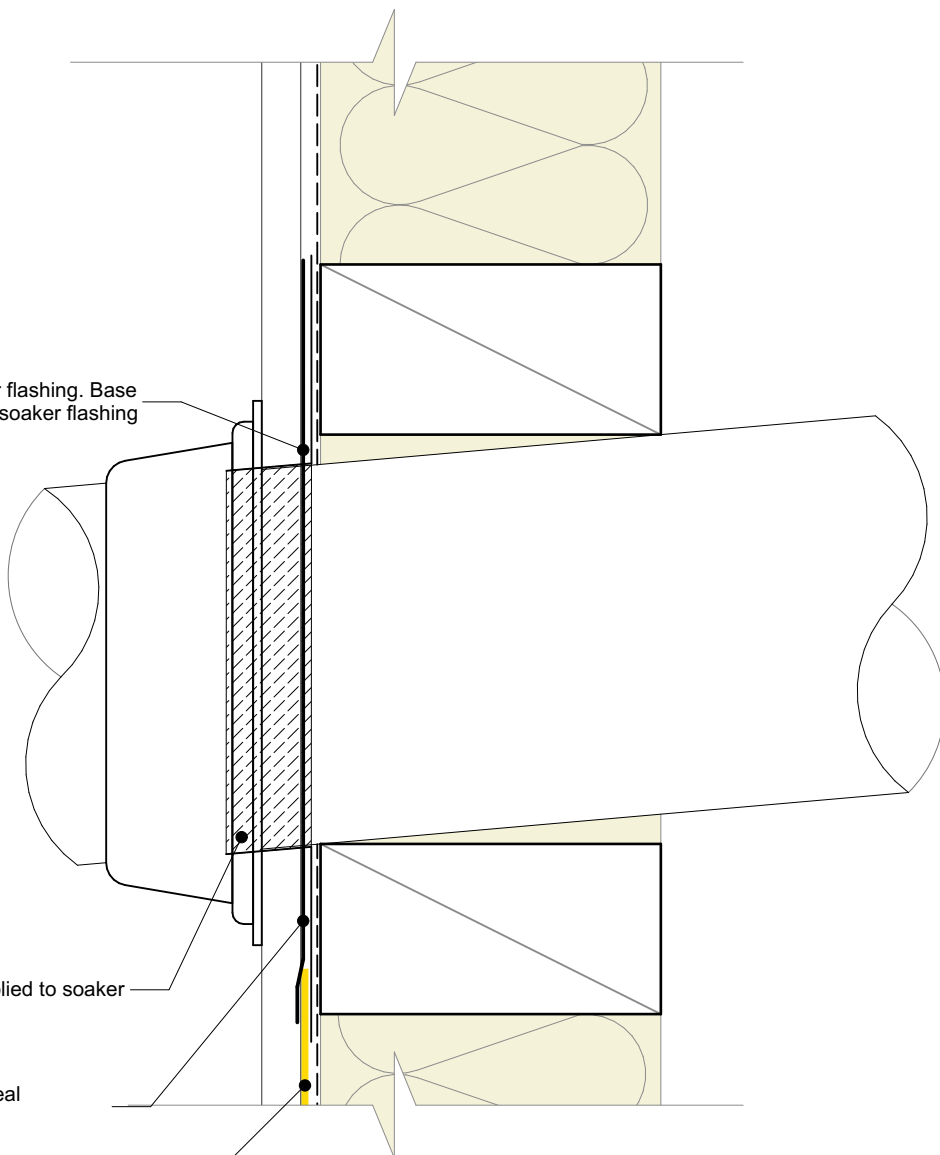
0.7mm Aluminium soaker flashing. Base tapered to fit in to plastic soaker flashing

Flexible flashing tape applied to soaker and pipe

Proprietary penetration seal (by others)

NC227

Plastic soaker flashing. Base extends down in to base channel.



General note:

- Cladding fixings omitted for clarity



nu-wall
CLADDING

**Nu-Wall cladding vertical direct fix
Typical pipe penetration**

© 2021 copyright in this document is the property of Nu-Wall Aluminium Cladding Limited. All rights reserved. Nu-Wall is a registered trademark of Aluminium Product Brands NZ Limited

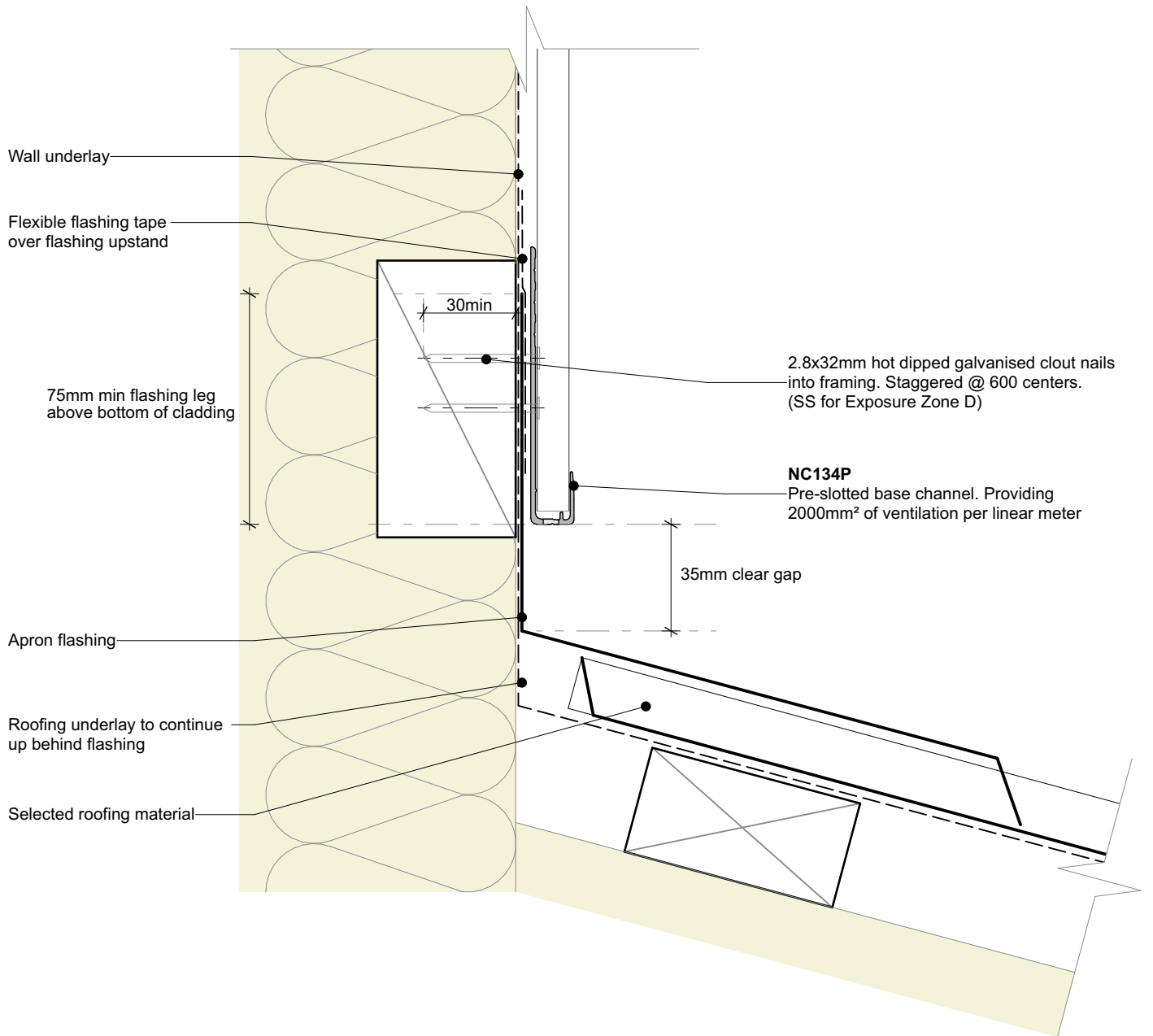
NW-VDF-017.02

Drawn by: Nu-Wall

Date: 25/02/2025

Checked by: RL, GT

Scale: 1:2 @ A4



General note:
 • Cladding fixings omitted for clarity

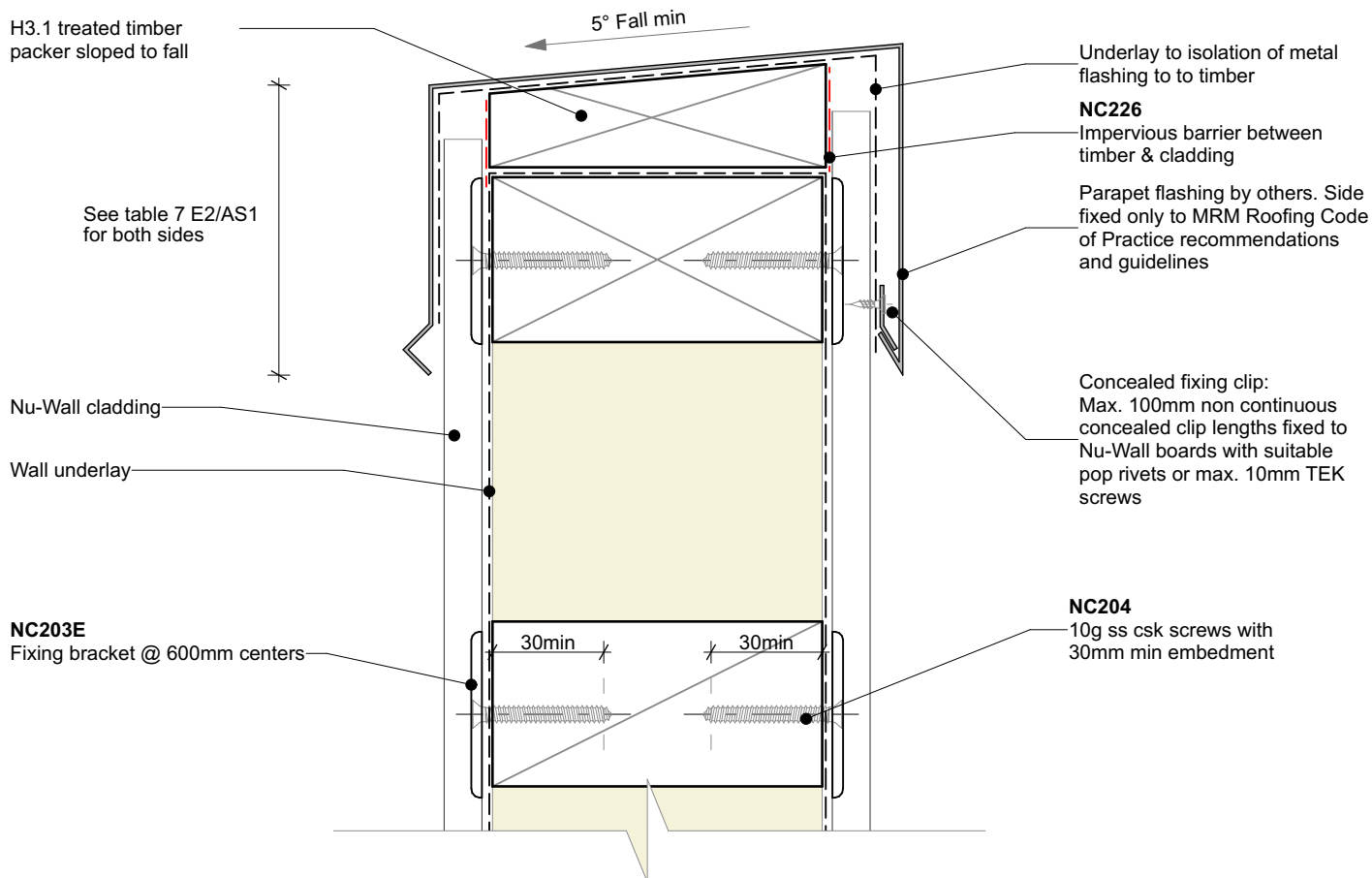


Nu-Wall cladding vertical direct fix Typical apron, roof to wall junction

© 2021 copyright in this document is the property of Nu-Wall Aluminium Cladding Limited. All rights reserved. Nu-Wall is a registered trademark of Aluminium Product Brands NZ Limited

NW-VDF-018.02

Drawn by: Nu-Wall	Date: 25/02/2025
Checked by: RL, GT	Scale: 1:2 @ A4



General note:

- Cladding fixings omitted for clarity



nu-wall
CLADDING

**Nu-Wall cladding vertical direct fix
Typical parapet to wall**

© 2021 copyright in this document is the property of Nu-Wall Aluminium Cladding Limited. All rights reserved. Nu-Wall is a registered trademark of Aluminium Product Brands NZ Limited

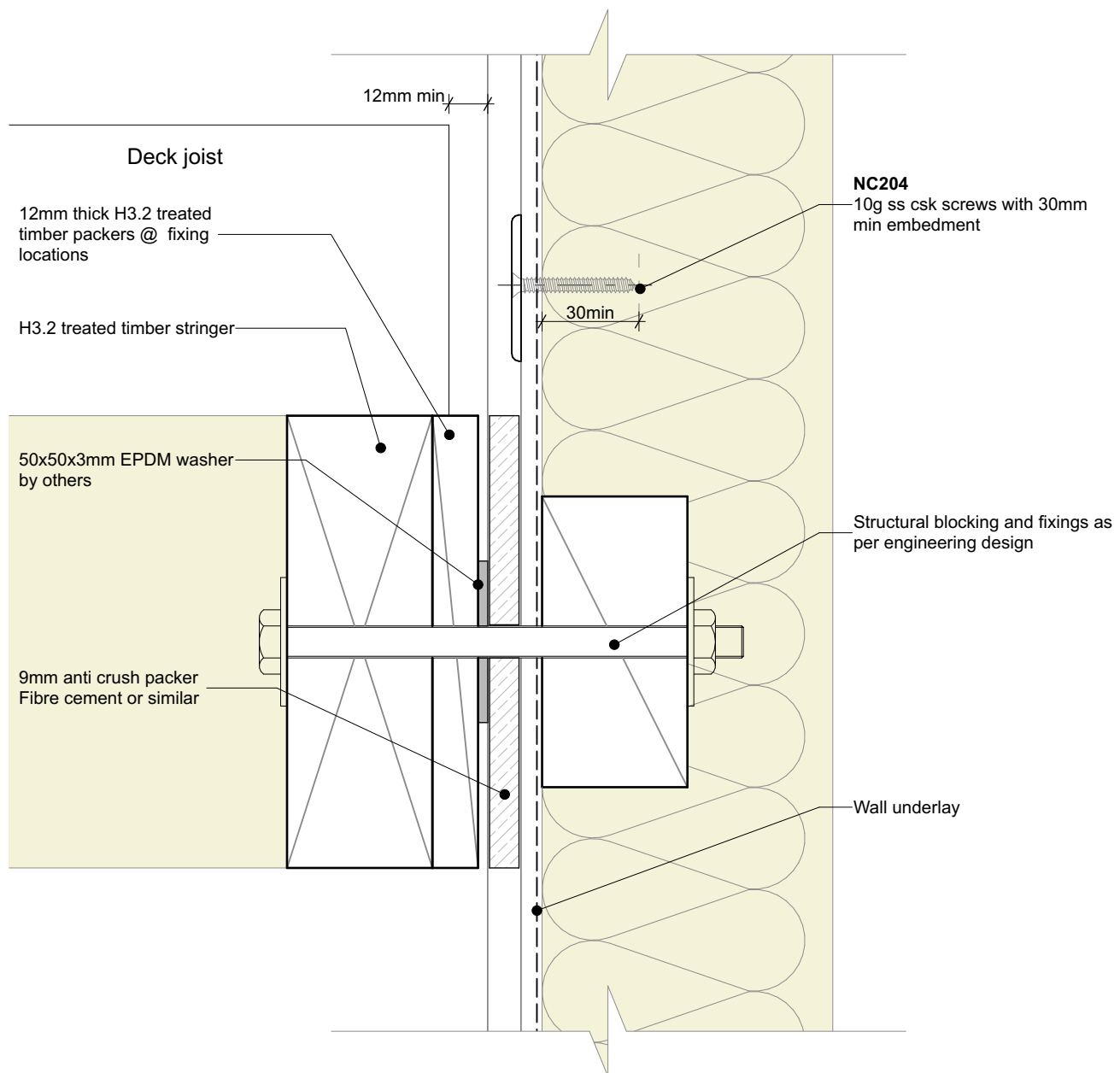
NW-VDF-019.02

Drawn by: Nu-Wall

Date: 25/02/2025

Checked by: RL, GT

Scale: 1:2 @ A4



Important:

- Nu-Wall is a hollow profile and requires packers to prevent crushing under pressure

General note:

- Cladding fixings omitted for clarity



nu-wall
CLADDING

Nu-Wall cladding vertical direct fix
Typical deck to wall junction

© 2021 copyright in this document is the property of Nu-Wall Aluminium Cladding Limited. All rights reserved. Nu-Wall is a registered trademark of Aluminium Product Brands NZ Limited

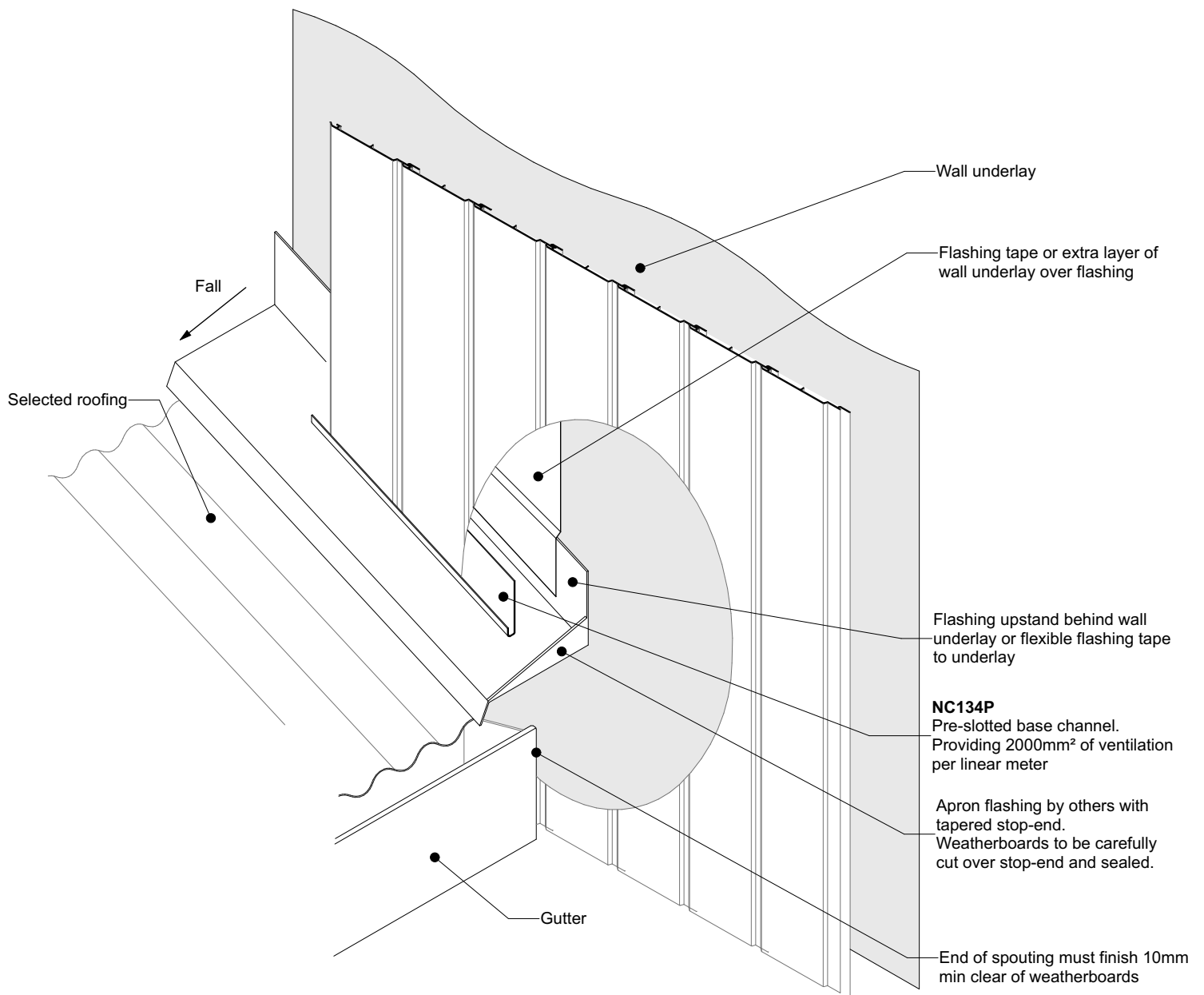
NW-VDF-020.02

Drawn by: Nu-Wall

Date: 25/02/2025

Checked by: RL, GT

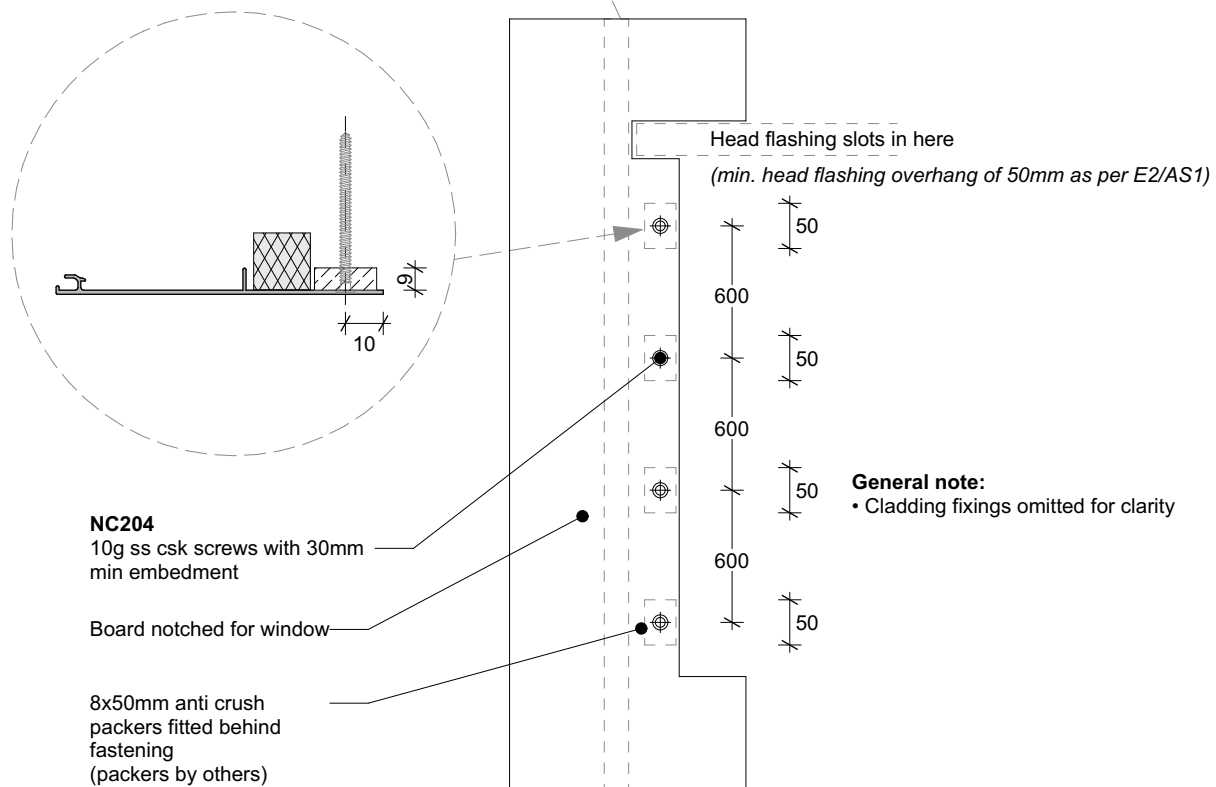
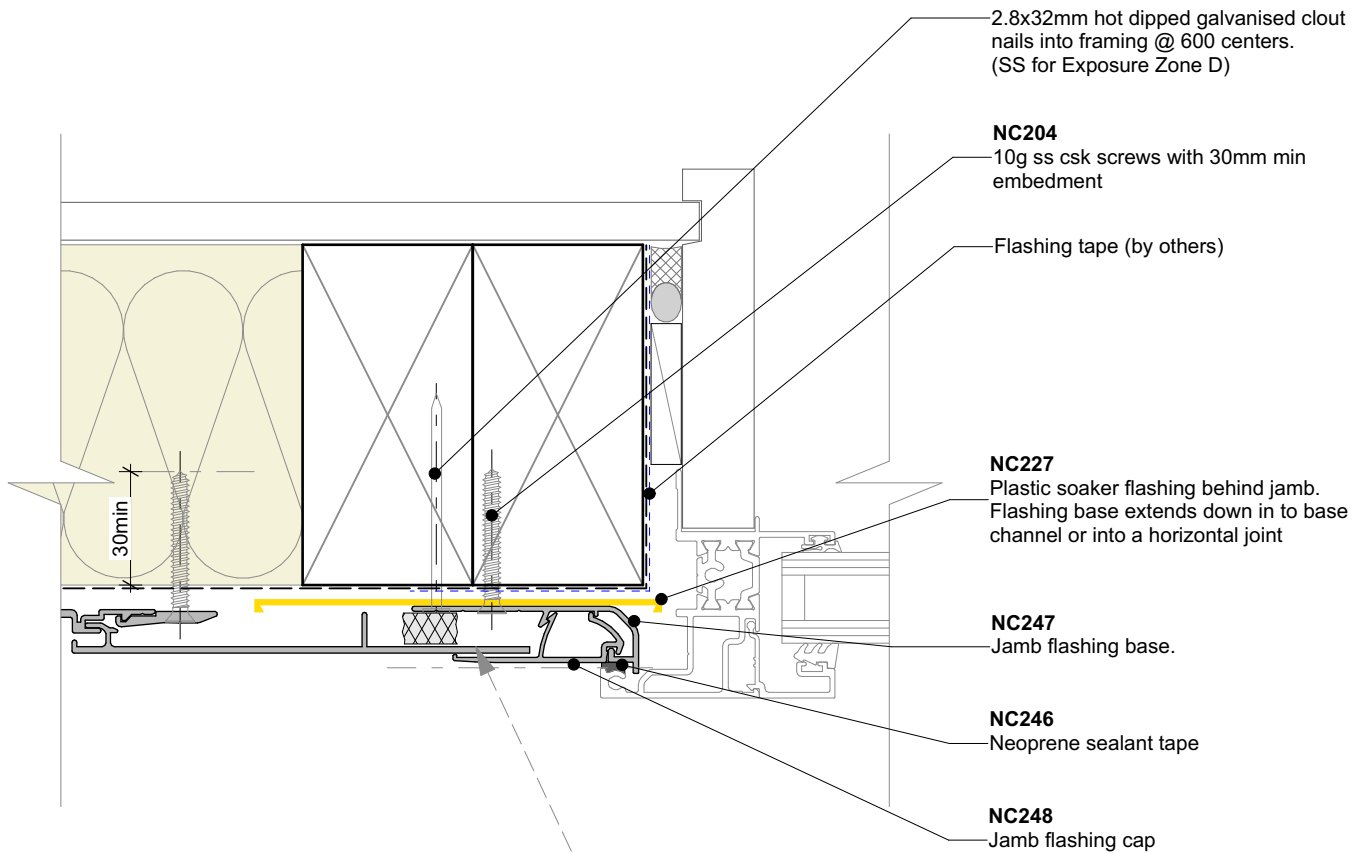
Scale: 1:2 @ A4

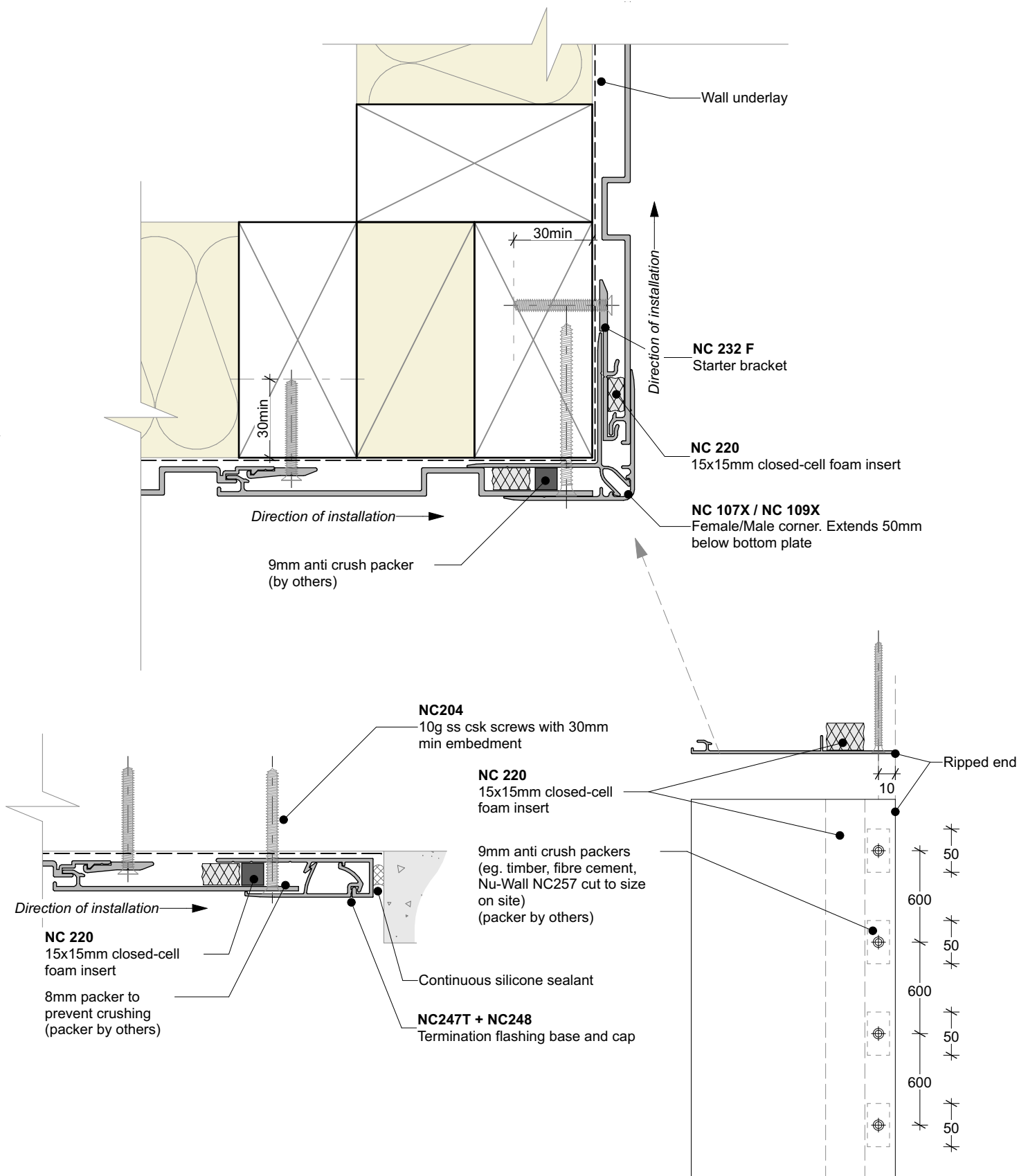


General note:
• Cladding fixings omitted for clarity



	Nu-Wall cladding vertical direct fix Typical roof and gutter to wall junction		NW-VDF-021.02	
	© 2021 copyright in this document is the property of Nu-Wall Aluminium Cladding Limited. All rights reserved. Nu-Wall is a registered trademark of Aluminium Product Brands NZ Limited		Drawn by: Nu-Wall	Date: 25/02/2025
			Checked by: RL, GT	Scale: 1:2 @ A4



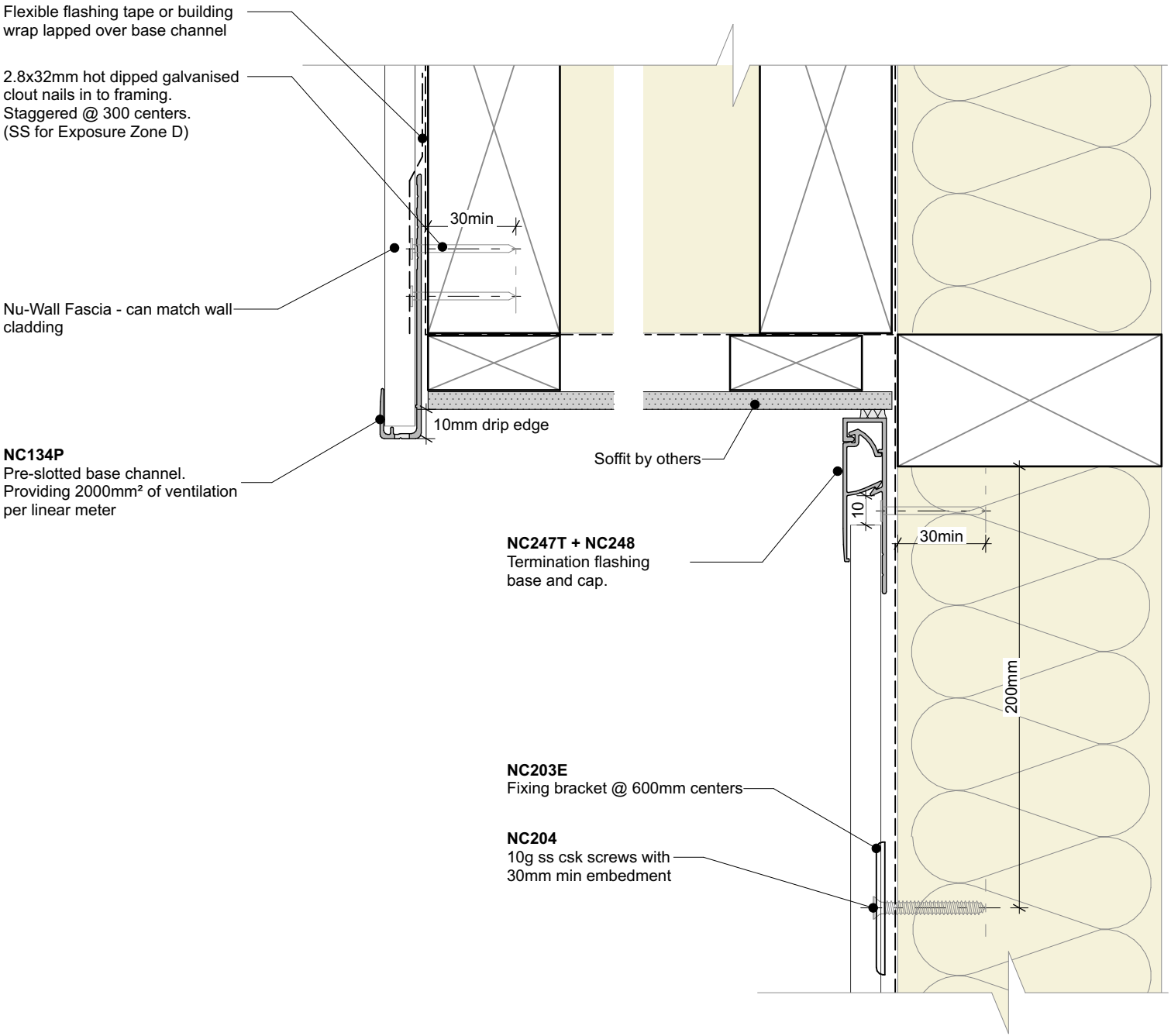


General note:

- Cladding fixings omitted for clarity
- When finishing a wall with a ripped board, the board must be fixed with a counter sunk screw @ 600mm centres



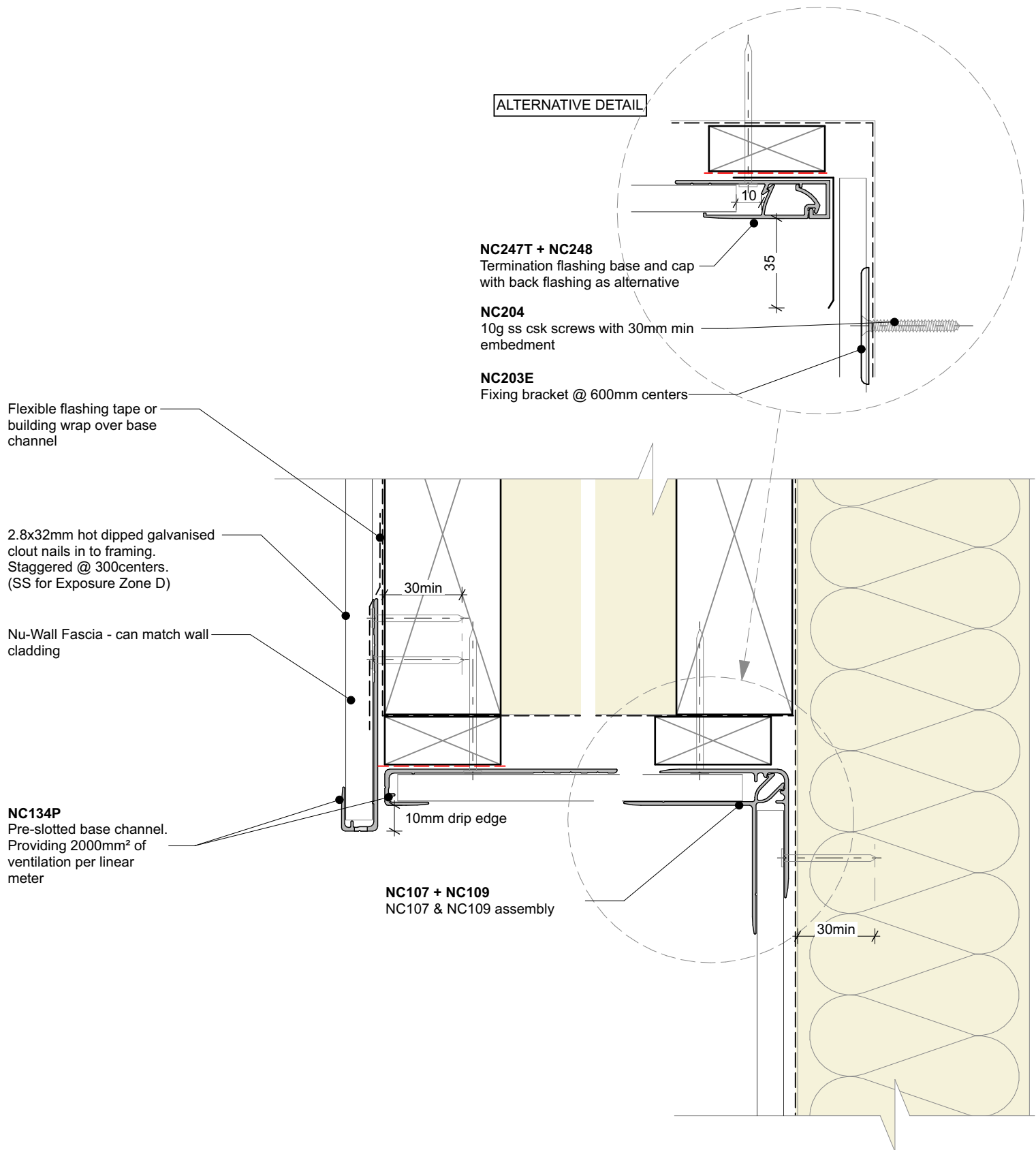
	Nu-Wall cladding vertical direct fix		NW-VDF-023.03	
	Ripped board to end of wall junction		Drawn by: Nu-Wall	Date: 25/02/2025
	© 2021 copyright in this document is the property of Nu-Wall Aluminium Cladding Limited. All rights reserved. Nu-Wall is a registered trademark of Aluminium Product Brands NZ Limited		Checked by: RL, GT	Scale: NTS



General note:
• Cladding fixings omitted for clarity



<div>Nu-Wall cladding vertical direct fix</div> <div>Typical Nu-Wall fascia to soffit</div> <div>© 2021 copyright in this document is the property of Nu-Wall Aluminium Cladding Limited. All rights reserved. Nu-Wall is a registered trademark of Aluminium Product Brands NZ Limited</div>	NW-VDF-024.03	
	Drawn by: Nu-Wall	Date: 25/02/2025
	Checked by: RL, GT	Scale: 1:2 @ A4



General note:

- Cladding fixings omitted for clarity



nu-wall
CLADDING

Nu-Wall cladding vertical direct fix

Typical Nu-Wall to fascia - soffit - wall (with alternative)

© 2021 copyright in this document is the property of Nu-Wall Aluminium Cladding Limited. All rights reserved. Nu-Wall is a registered trademark of Aluminium Product Brands NZ Limited

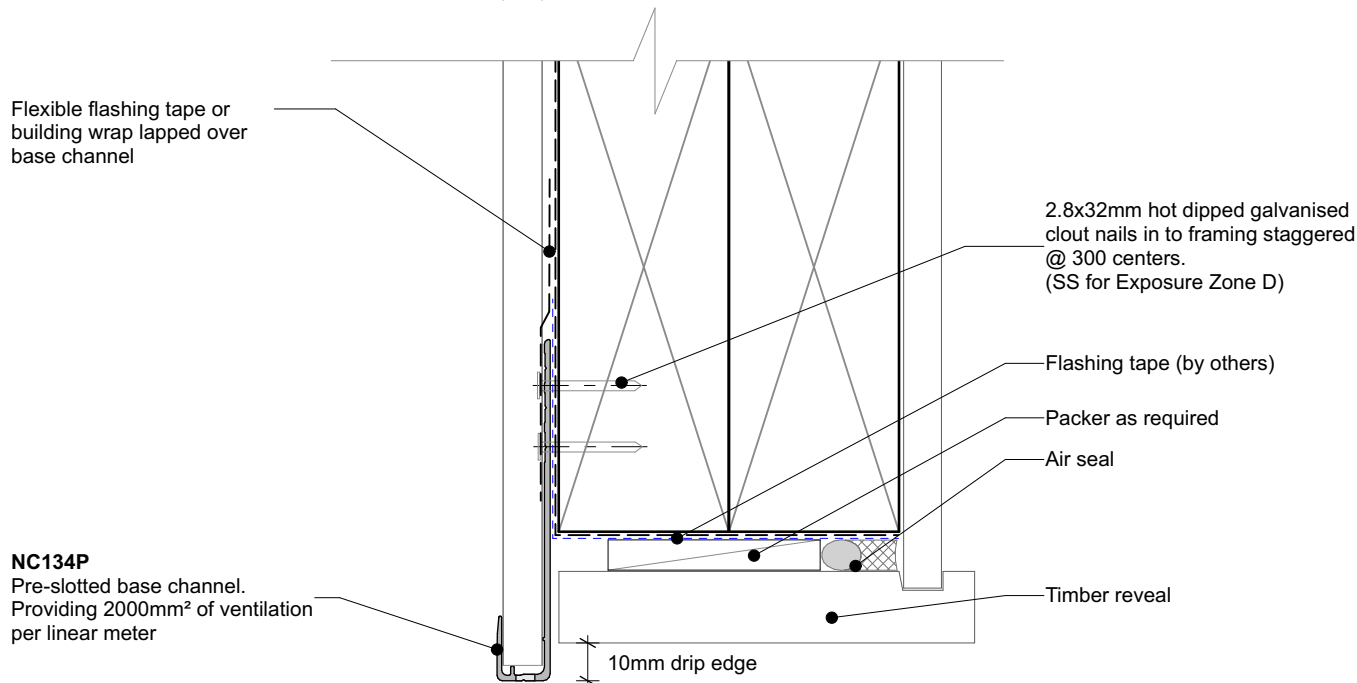
NW-VDF-025.03

Drawn by: Nu-Wall

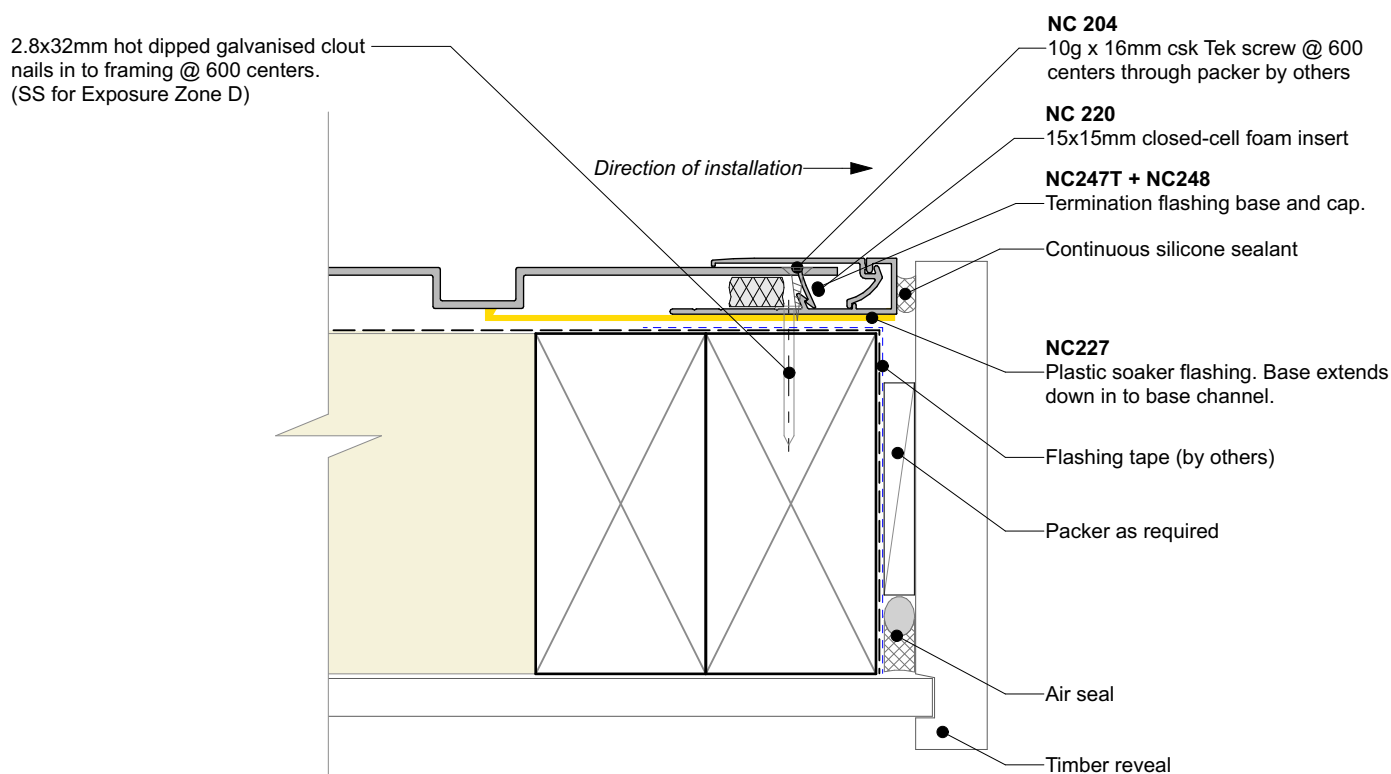
Date: 25/02/2025

Checked by: RL, GT

Scale: 1:2 @ A4



GARAGE DOOR HEAD (Timber reveal)



GARAGE DOOR JAMB (Timber reveal)



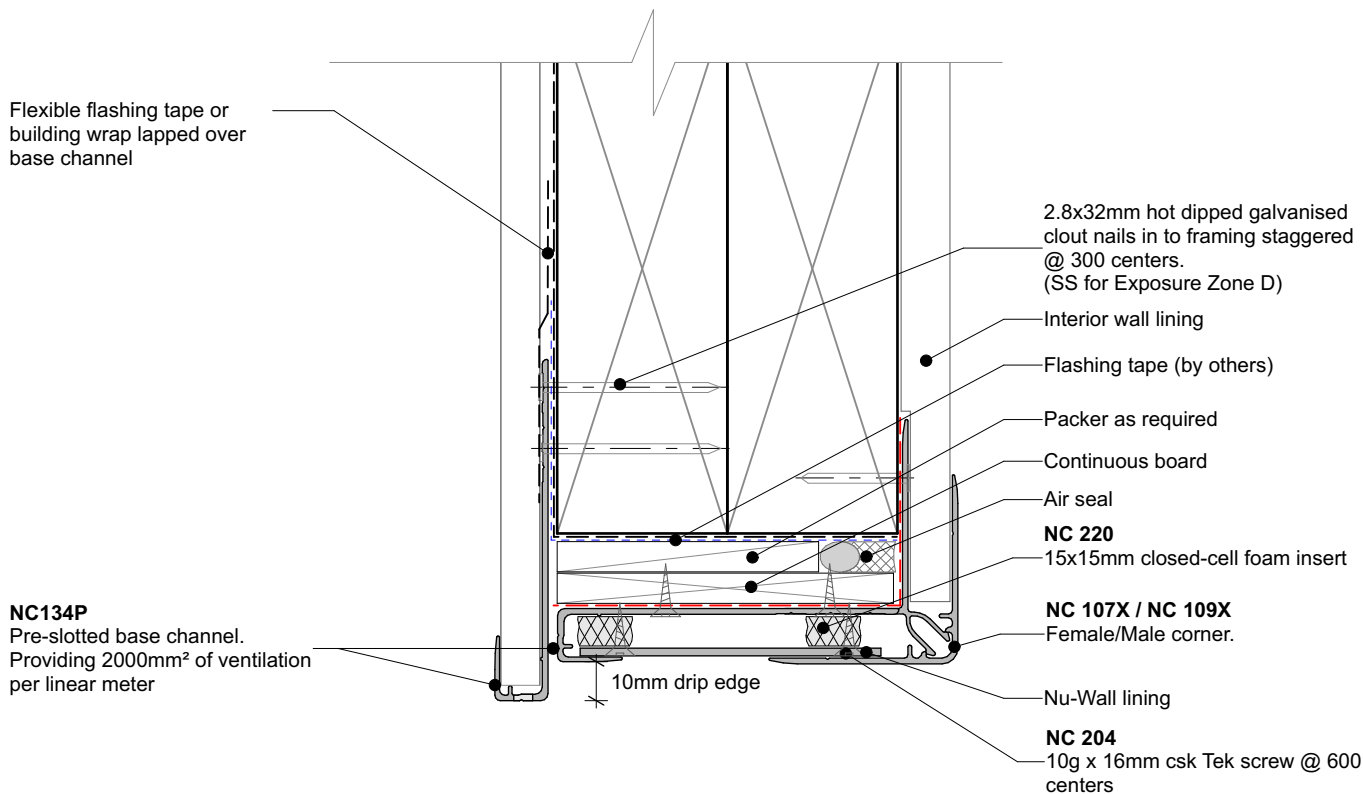
nu-wall
CLADDING

Nu-Wall cladding vertical direct fix Typical garage door head - jamb (Timber reveal)

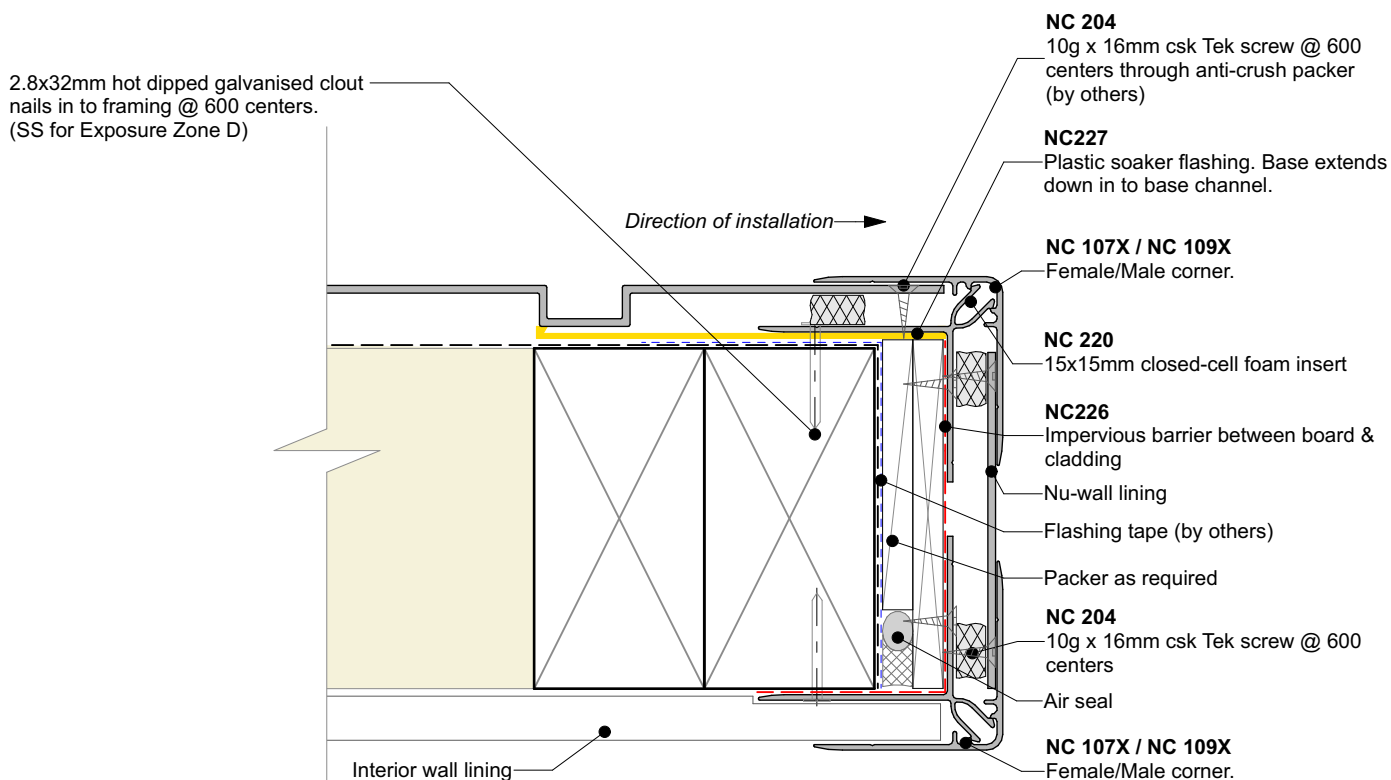
© 2021 copyright in this document is the property of Nu-Wall Aluminium Cladding Limited. All rights reserved. Nu-Wall is a registered trademark of Aluminium Product Brands NZ Limited

NW-VDF-026.03

Drawn by: Nu-Wall	Date: 25/02/2025
Checked by: RL, GT	Scale: 1:2 @ A4



GARAGE DOOR HEAD (Nu-Wall reveal)



GARAGE DOOR JAMB (Nu-Wall reveal)



nu-wall
CLADDING

Nu-Wall cladding vertical direct fix

Typical garage door head - jamb (Nu-Wall Reveal Profile)

© 2021 copyright in this document is the property of Nu-Wall Aluminium Cladding Limited. All rights reserved. Nu-Wall is a registered trademark of Aluminium Product Brands NZ Limited

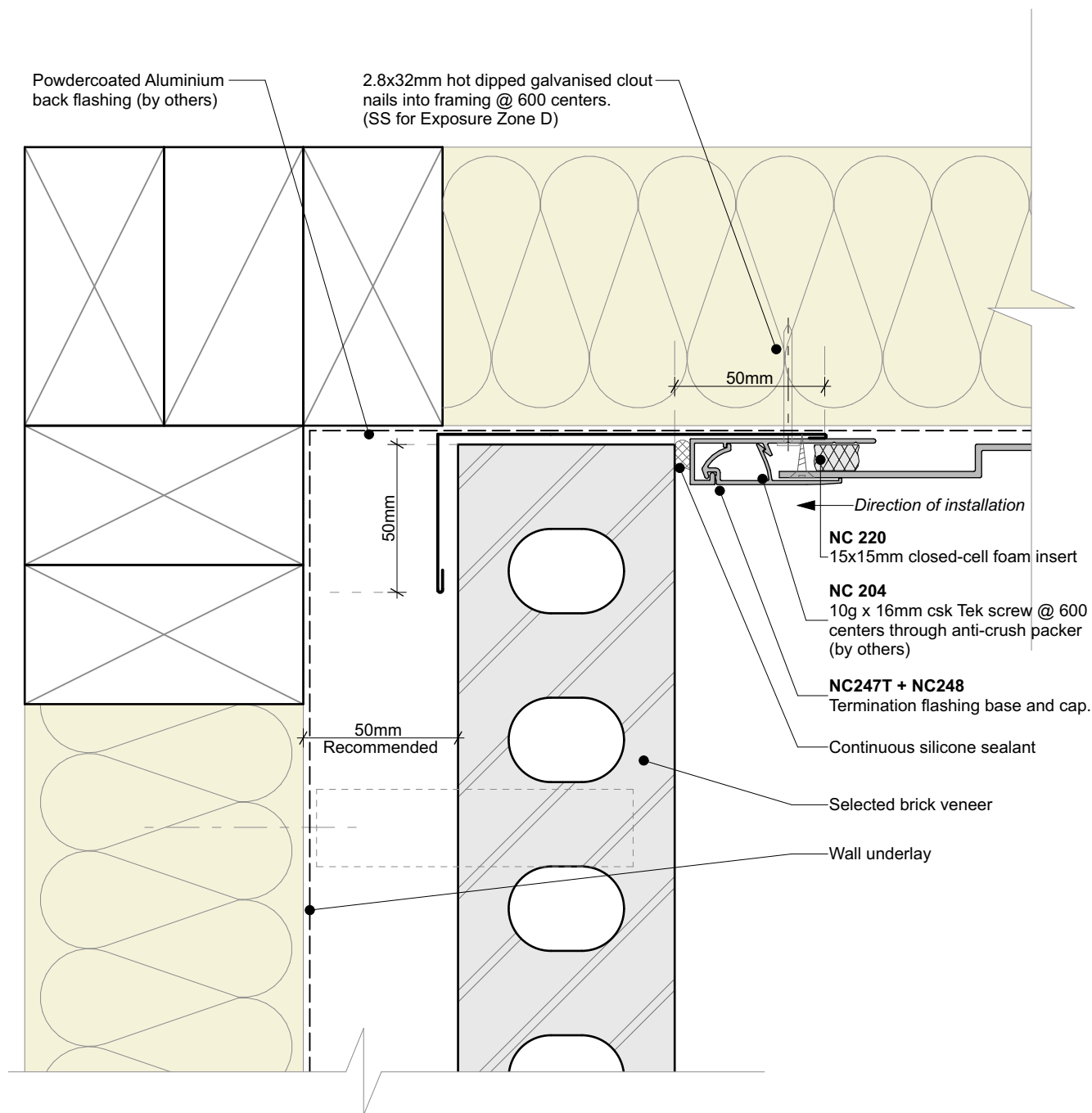
NW-VDF-026b.03

Drawn by: Nu-Wall

Date: 25/02/2025

Checked by: RL, GT

Scale: 1:2 @ A4

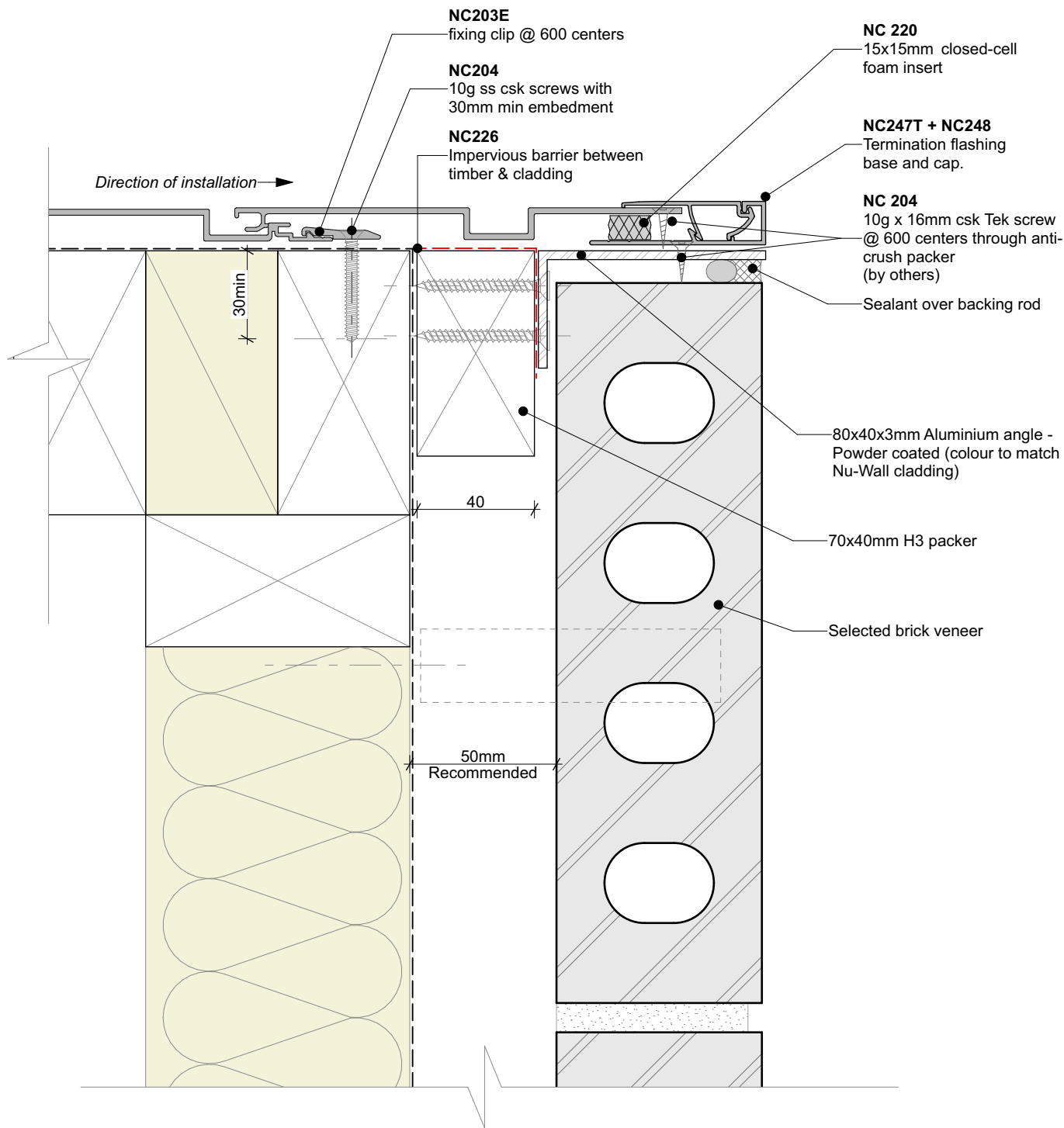


General note:

- Cladding fixings omitted for clarity
- When finishing a wall with a ripped board, the board must be direct fixed with a counter sunk screw @ 600mm centres




	Nu-Wall cladding vertical direct fix		NW-VDF-027.03	
	Typical Nu-Wall to brick internal corner		Drawn by: Nu-Wall	Date: 25/02/2025
	© 2021 copyright in this document is the property of Nu-Wall Aluminium Cladding Limited. All rights reserved. Nu-Wall is a registered trademark of Aluminium Product Brands NZ Limited		Checked by: RL, GT	Scale: 1:2 @ A4

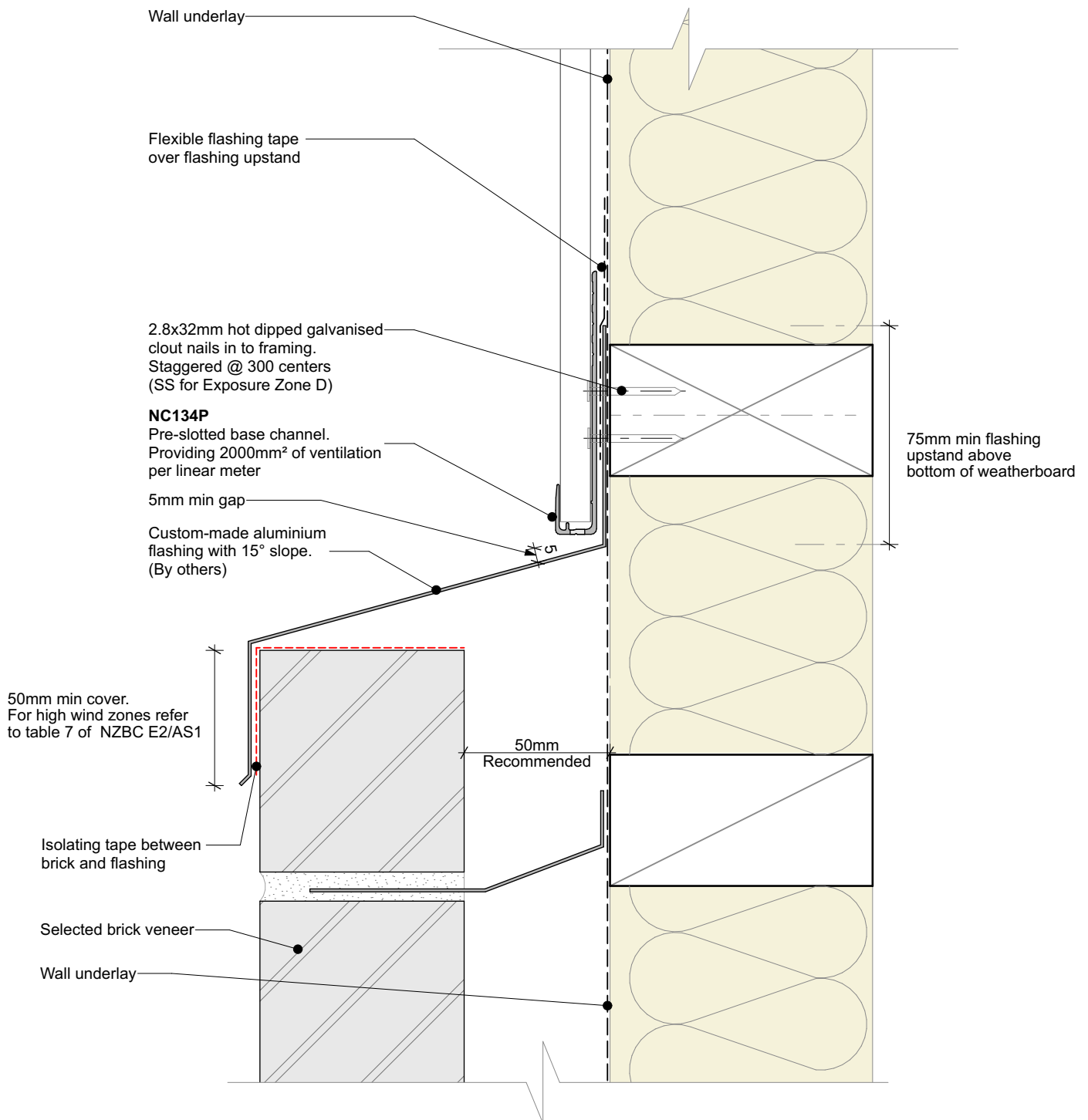


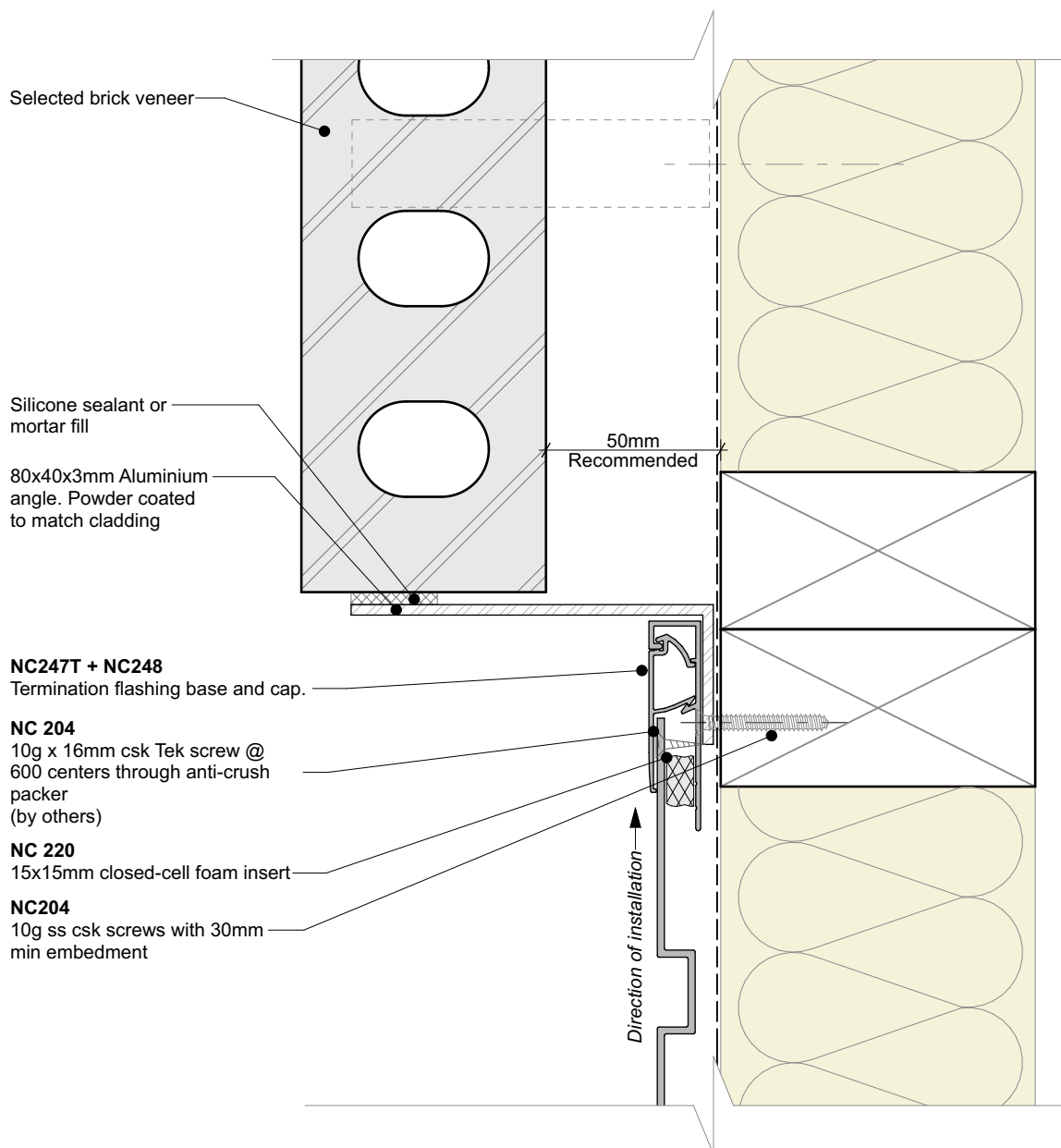
General note:

- Cladding fixings omitted for clarity
- When finishing a wall with a ripped board, the board must be direct fixed with a counter sunk screw @ 600mm centres



	Nu-Wall cladding vertical direct fix		NW-VDF-028.03	
	Typical Nu-Wall to brick external corner		Drawn by: Nu-Wall	Date: 25/02/2025
	© 2021 copyright in this document is the property of Nu-Wall Aluminium Cladding Limited. All rights reserved. Nu-Wall is a registered trademark of Aluminium Product Brands NZ Limited		Checked by: RL, GT	Scale: 1:2 @ A4



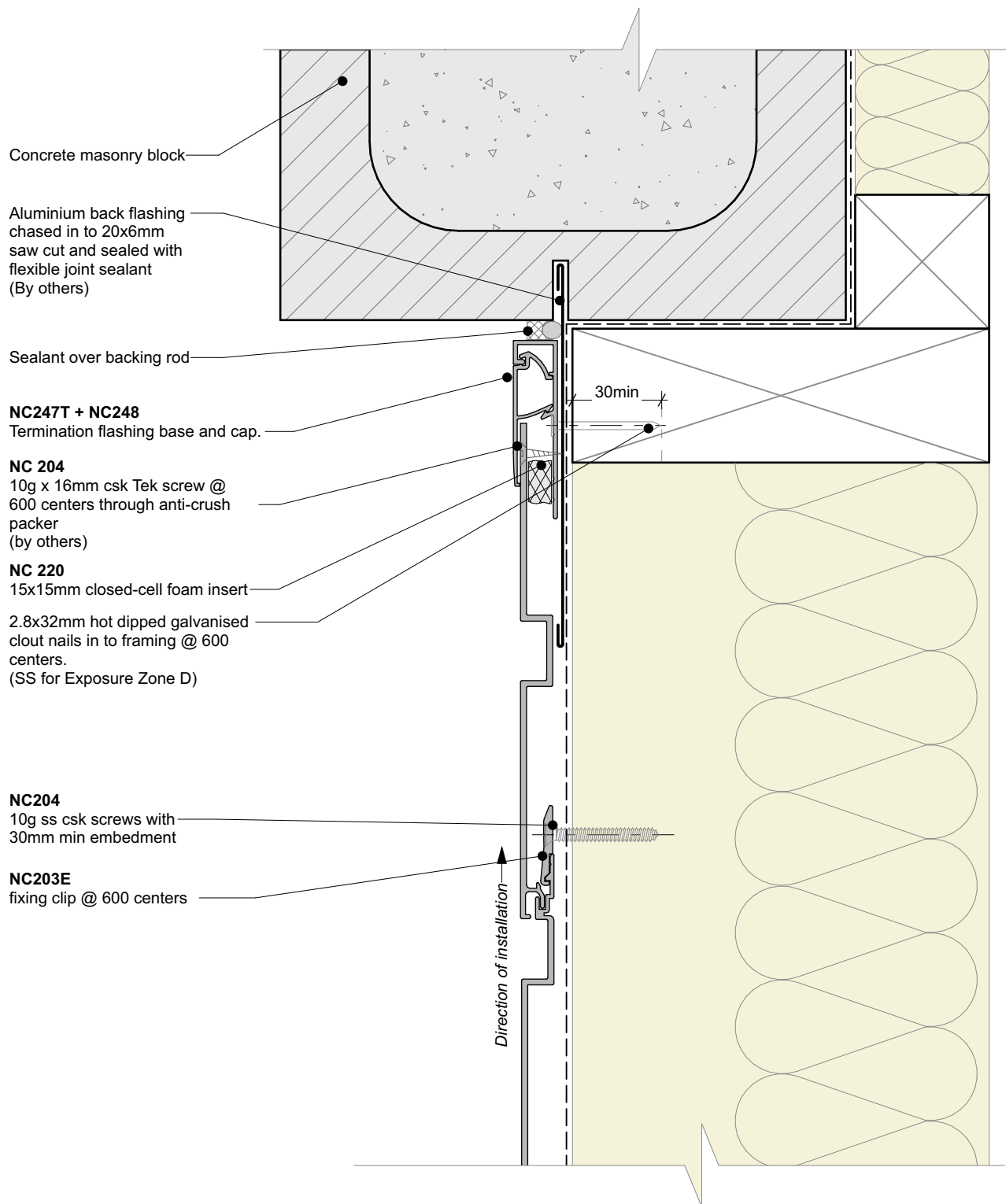


General note:

- Cladding fixings omitted for clarity
- When finishing a wall with a ripped board, the board must be direct fixed with a counter sunk screw @ 600mm centres



	Nu-Wall cladding vertical direct fix		NW-VDF-030.03	
	Typical Nu-Wall to brick vertical junction		Drawn by: Nu-Wall	Date: 25/02/2025
	© 2021 copyright in this document is the property of Nu-Wall Aluminium Cladding Limited. All rights reserved. Nu-Wall is a registered trademark of Aluminium Product Brands NZ Limited		Checked by: RL, GT	Scale: 1:2 @ A4

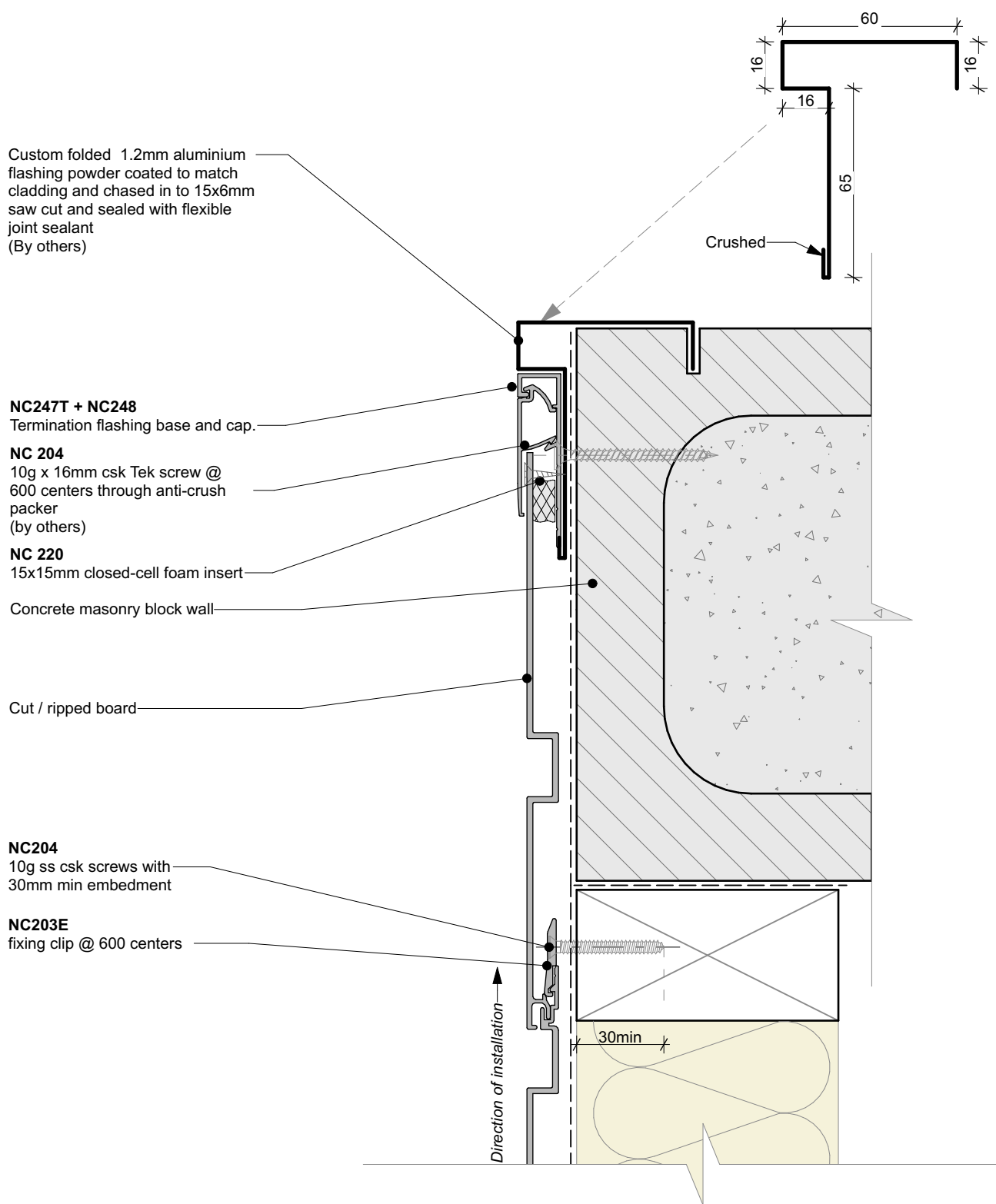


General note:

- Cladding fixings omitted for clarity
- When finishing a wall with a ripped board, the board must be direct fixed with a counter sunk screw @ 600mm centres



	Nu-Wall cladding vertical direct fix		NW-VDF-031.03	
	Typical Nu-Wall to concrete masonry vertical junction		Drawn by: Nu-Wall	Date: 25/02/2025
	© 2021 copyright in this document is the property of Nu-Wall Aluminium Cladding Limited. All rights reserved. Nu-Wall is a registered trademark of Aluminium Product Brands NZ Limited		Checked by: RL, GT	Scale: 1:2 @ A4

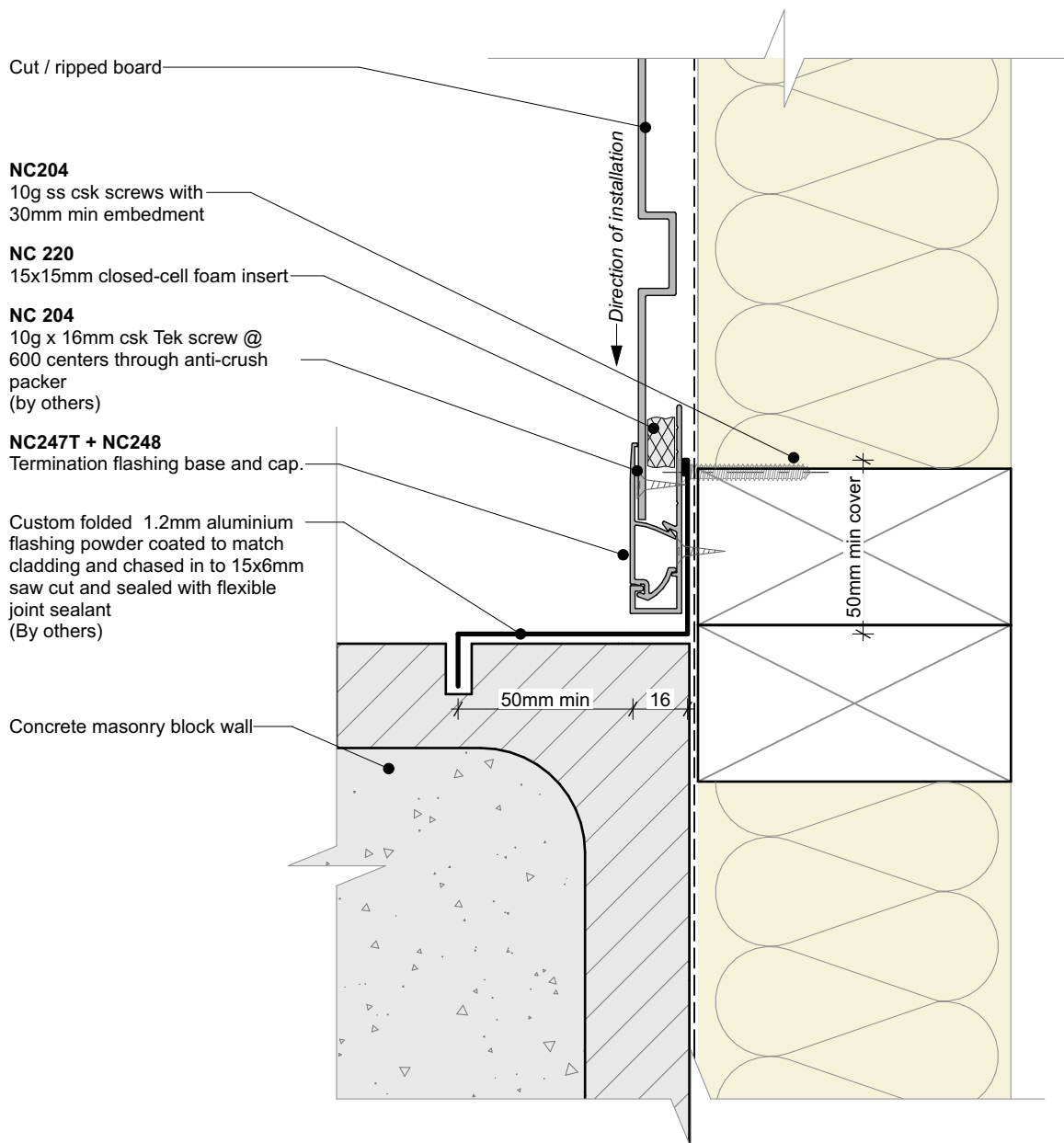


General note:

- Cladding fixings omitted for clarity
- When finishing a wall with a ripped board, the board must be direct fixed with a counter sunk screw @ 600mm centres



	Nu-Wall cladding vertical direct fix		NW-VDF-032.03	
	Typical Nu-Wall to concrete masonry external corner		Drawn by: Nu-Wall	Date: 25/02/2025
	© 2021 copyright in this document is the property of Nu-Wall Aluminium Cladding Limited. All rights reserved. Nu-Wall is a registered trademark of Aluminium Product Brands NZ Limited		Checked by: RL, GT	Scale: 1:2 @ A4



General note:

- Cladding fixings omitted for clarity
- When finishing a wall with a ripped board, the board must be direct fixed with a counter sunk screw @ 600mm centres



nu-wall
CLADDING

Nu-Wall cladding vertical direct fix
Typical Nu-Wall to concrete masonry internal corner

© 2021 copyright in this document is the property of Nu-Wall Aluminium Cladding Limited. All rights reserved. Nu-Wall is a registered trademark of Aluminium Product Brands NZ Limited

NW-VDF-033.03

Drawn by: Nu-Wall	Date: 25/02/2025
Checked by: RL, GT	Scale: 1:2 @ A4