

2.8x32mm hot dipped galvanised clout  
nails @ 600 centers.  
(SS for Exposure Zone D)

**NC203E**  
fixing clip @ 600 centers

Last board ripped to fit

**NC 204**  
10g x 16mm csk Tek screw @ 600  
centers through anti-crush packer  
(by others)

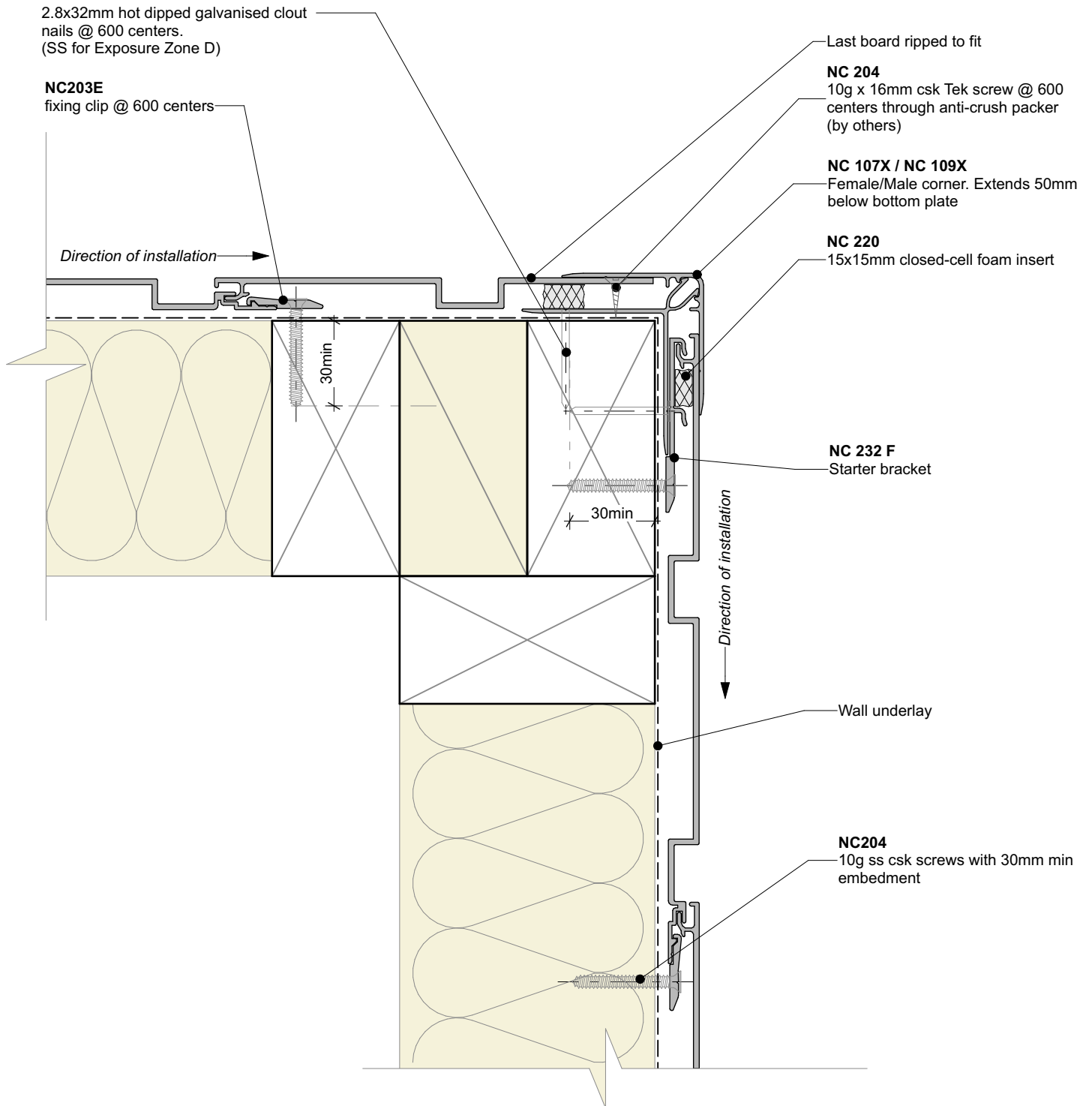
**NC 107X / NC 109X**  
Female/Male corner. Extends 50mm  
below bottom plate

**NC 220**  
15x15mm closed-cell foam insert

**NC 232 F**  
Starter bracket

Wall underlay

**NC204**  
10g ss csk screws with 30mm min  
embedment



**nu-wall**  
CLADDING

## Nu-Wall cladding vertical direct fix Typical external 90 deg corner

© 2021 copyright in this document is the property of Nu-Wall Aluminium Cladding Limited. All rights reserved. Nu-Wall is a registered trademark of Aluminium Product Brands NZ Limited

**NW-VDF-007.02**

Drawn by: Nu-Wall

Date: 25/02/2025

Checked by: RL, GT

Scale: 1:2 @ A4