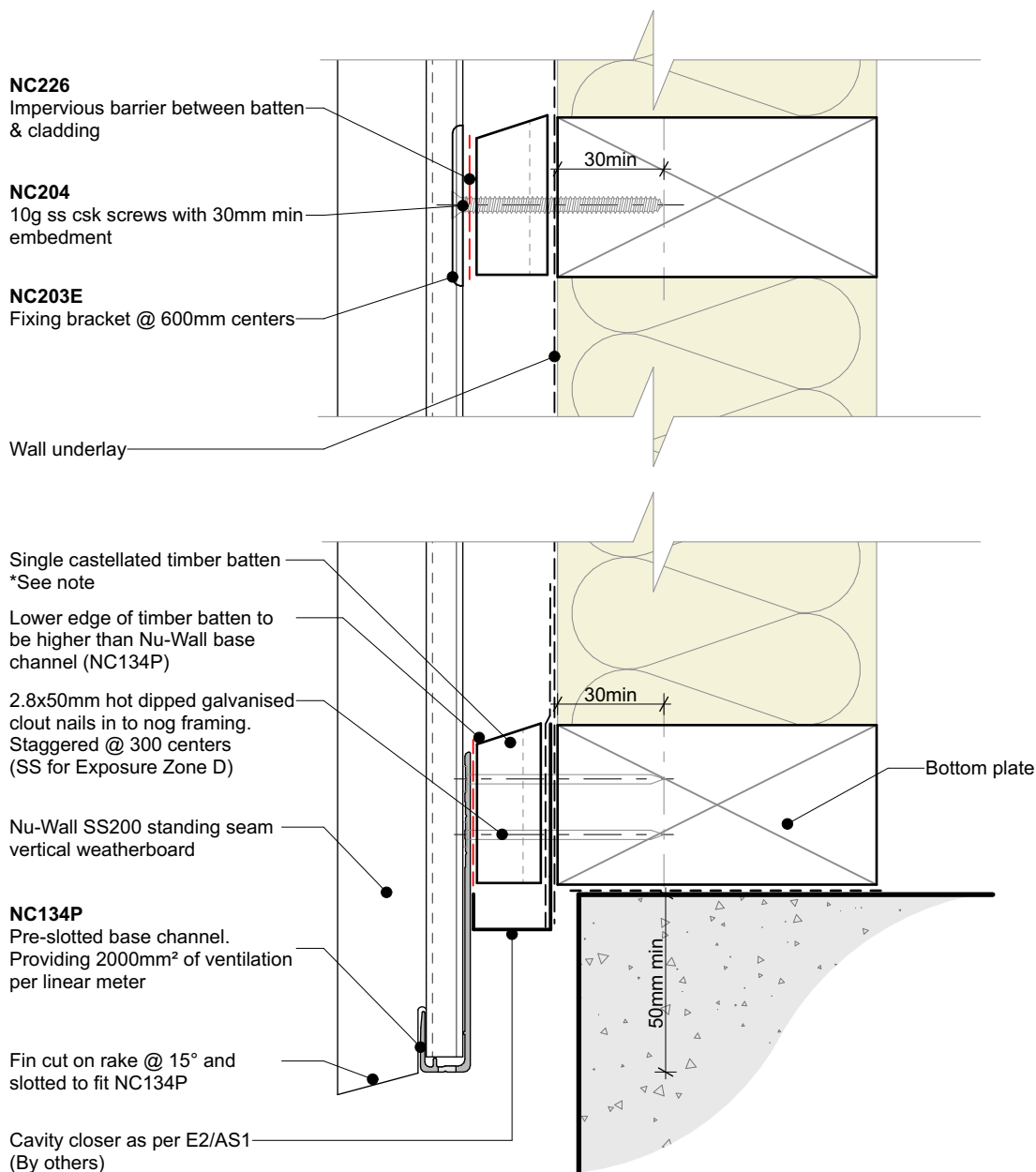




Nu-Wall Extruded Aluminium Cladding
Installation CAD details - Vertical over cavity (SS200)

1	NW-SS200-001.01	Typical installation - Base channel option 1	25/2/2025
2	NW-SS200-002.01	Typical installation - Base channel option 2	25/2/2025
3	NW-SS200-003.01	Typical inter storey joint - option 1	25/2/2025
4	NW-SS200-004.01	Typical inter storey joint - option 2	25/2/2025
5	NW-SS200-005.01	Typical window head section	25/2/2025
6	NW-SS200-006.01	Typical jamb section - NC247 and NC248 assembly	25/2/2025
7	NW-SS200-007.01	Typical sill section - NC247 and NC248 assembly	25/2/2025
8	NW-SS200-008.01	Typical soffit trim - Option 1	25/2/2025
9	NW-SS200-009.01	Typical soffit trim - Option 2	25/2/2025
10	NW-SS200-010.01	Typical raking soffit - Option 1	25/2/2025
11	NW-SS200-011.01	Typical raking soffit - Option 2	25/2/2025
12	NW-SS200-012.01	Typical inverse raking soffit - Option 1	25/2/2025
13	NW-SS200-013.01	Typical inverse raking soffit - Option 2	25/2/2025
14	NW-SS200-014.01	Typical garage door head (Nu-Wall Reveal Profile)	25/2/2025
15	NW-SS200-015.01	External 90 deg corner using NC107X and NC109X	25/2/2025
16	NW-SS200-016.01	Internal 90 deg. corner using NC107X and NC109X	25/2/2025
17	NW-SS200-017.01	SS200 and Mono 200 Combination	25/2/2025

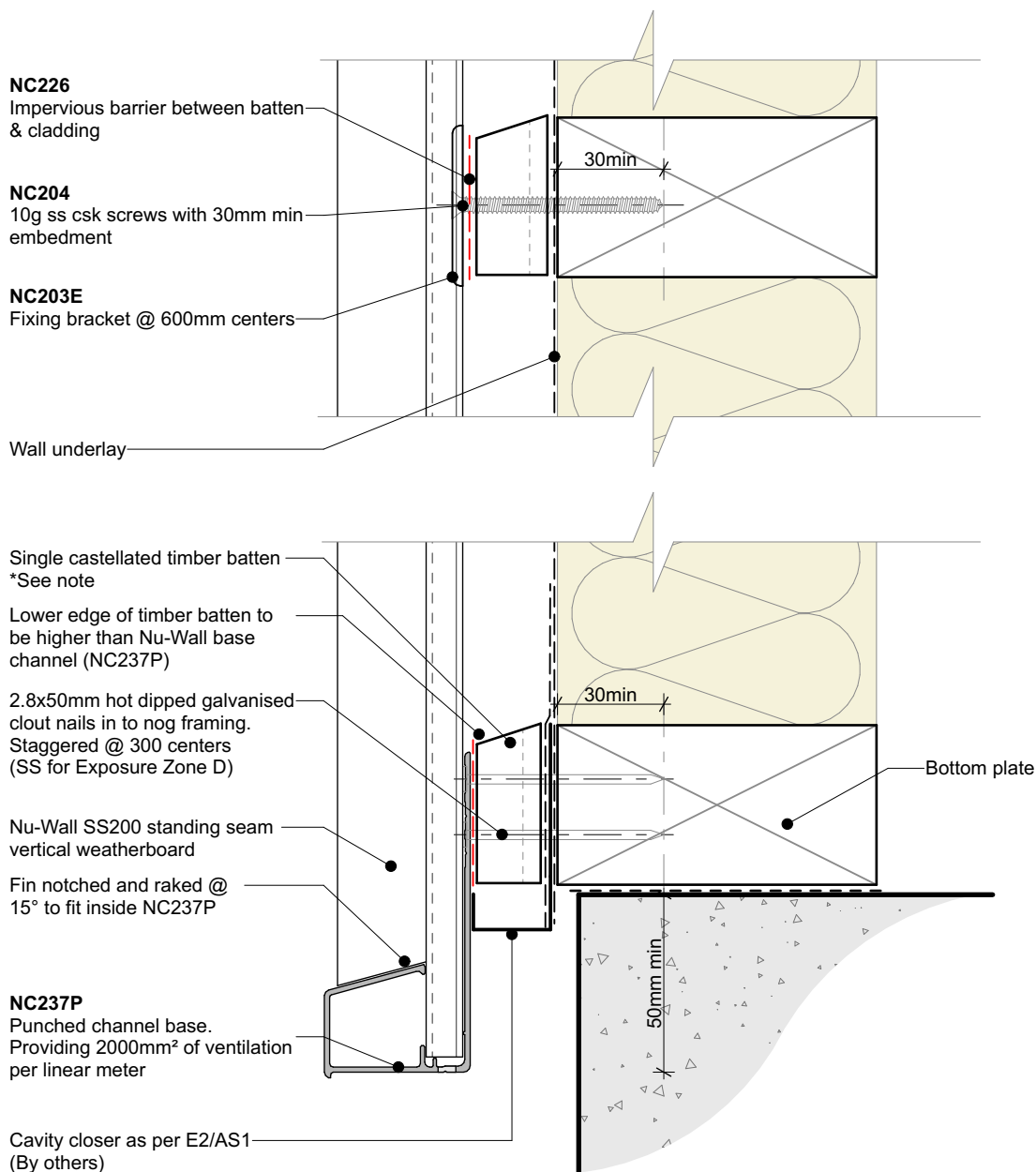


Cavity batten note:

- 20mm single castellated timber battens required for all Nu-Wall installations.
- Batten to have 15° slope for moisture egress
- Allow 6mm gap between vertical and horizontal battens
- Sill and head battens to be max. 500mm with a 6mm gap to each segment
- 18mm single castellated battens are available from Nu Wall for all vertical applications to wall junctions and jambs
- Proprietary Nu-Wall Alibat is available as an alternative when a structural non-combustable cavity batten is required



	Nu-Wall cladding SS200 vertical on cavity		NW-SS200-001.01	
	Typical installation - Base channel option 1		Drawn by: Nu-Wall	Date: 25/02/2025
	© 2021 copyright in this document is the property of Nu-Wall Aluminium Cladding Limited. All rights reserved. Nu-Wall is a registered trademark of Aluminium Product Brands NZ Limited		Checked by: RL, GT	Scale: 1:2 @ A4

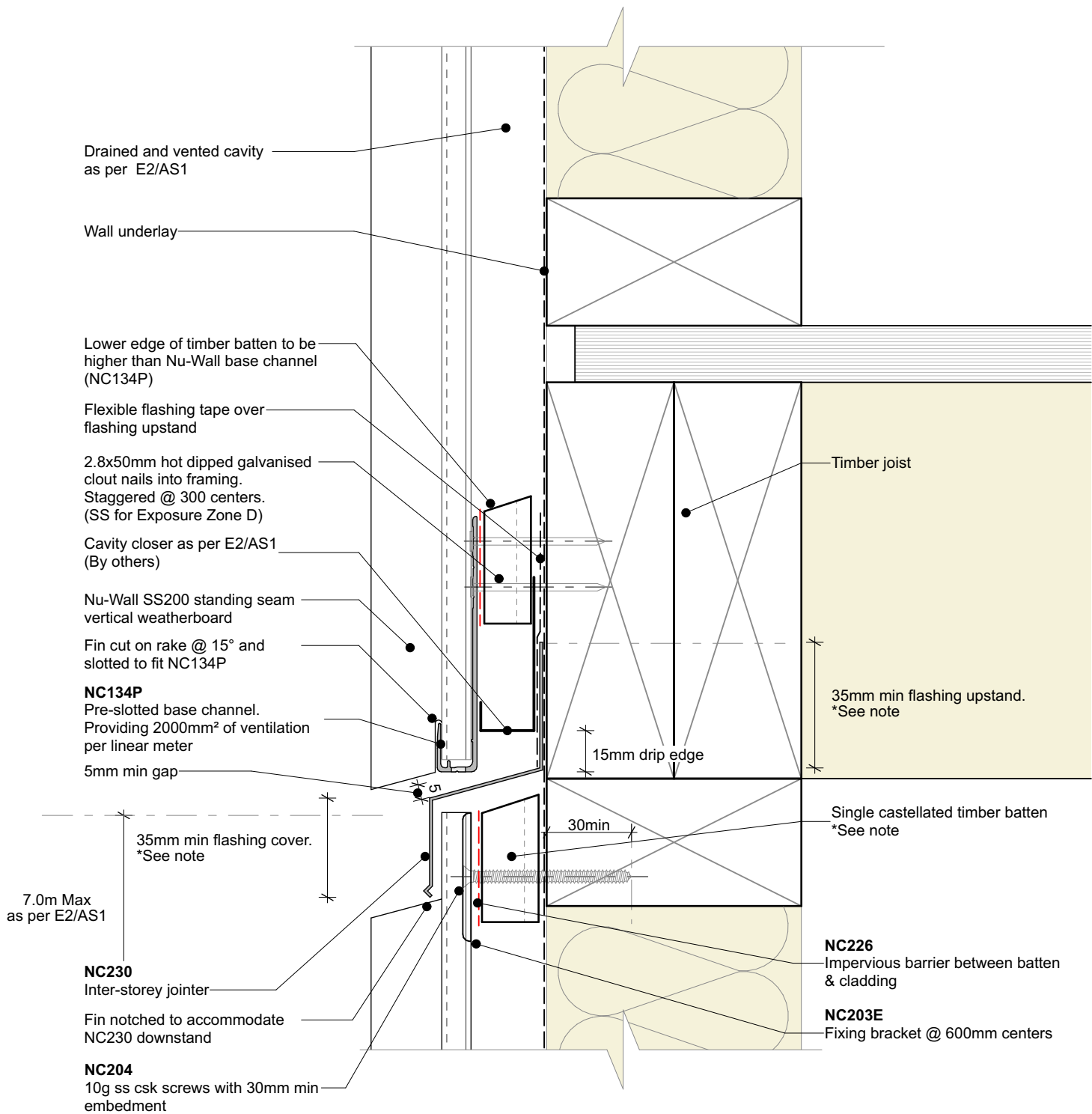


Cavity batten note:

- 20mm single castellated timber battens required for all Nu-Wall installations.
- Batten to have 15° slope for moisture egress
- Allow 6mm gap between vertical and horizontal battens
- Sill and head battens to be max. 500mm with a 6mm gap to each segment
- 18mm single castellated battens are available from Nu Wall for all vertical applications to wall junctions and jambs
- Proprietary Nu-Wall Alibat is available as an alternative when a structural non-combustable cavity batten is required



	Nu-Wall cladding SS200 vertical on cavity		NW-SS200-002.01	
	Typical installation - Base channel option 2		Drawn by: Nu-Wall	Date: 25/02/2025
	© 2021 copyright in this document is the property of Nu-Wall Aluminium Cladding Limited. All rights reserved. Nu-Wall is a registered trademark of Aluminium Product Brands NZ Limited		Checked by: RL, GT	Scale: 1:2 @ A4

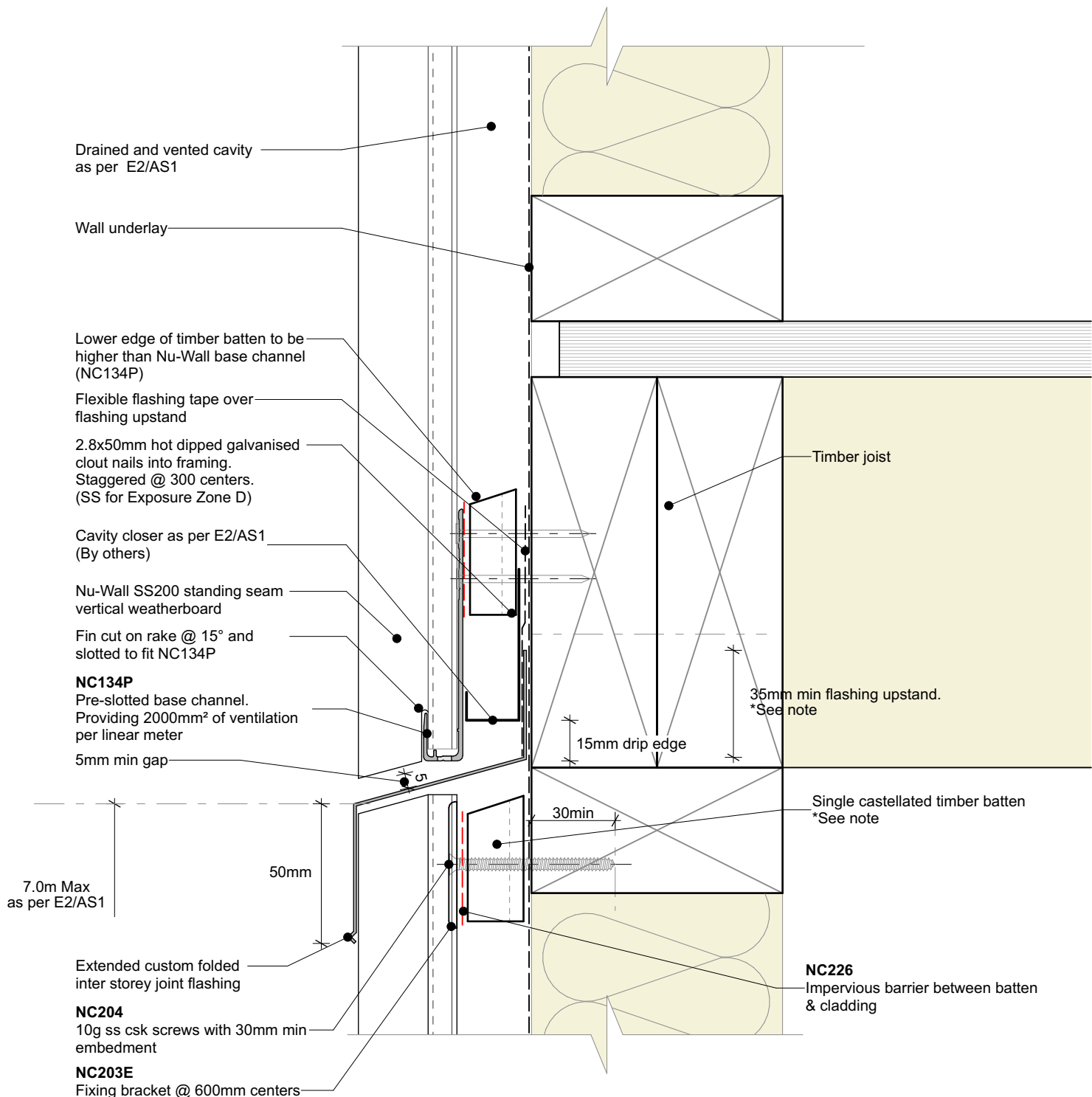


Cavity batten note:

- 20mm single castellated timber battens required for all Nu-Wall installations.
- Batten to have 15° slope for moisture egress
- Allow 6mm gap between vertical and horizontal battens
- Sill and head battens to be max. 500mm with a 6mm gap to each segment
- 18mm single castellated battens are available from Nu Wall for all vertical applications to wall junctions and jambs
- Proprietary Nu-Wall Alibat is available as an alternative when a structural non-combustable cavity batten is required



	Nu-Wall cladding SS200 vertical on cavity		NW-SS200-003.01	
	Typical inter storey joint - option 1		Drawn by: Nu-Wall	Date: 25/02/2025
	© 2021 copyright in this document is the property of Nu-Wall Aluminium Cladding Limited. All rights reserved. Nu-Wall is a registered trademark of Aluminium Product Brands NZ Limited		Checked by: RL, GT	Scale: 1:2 @ A4

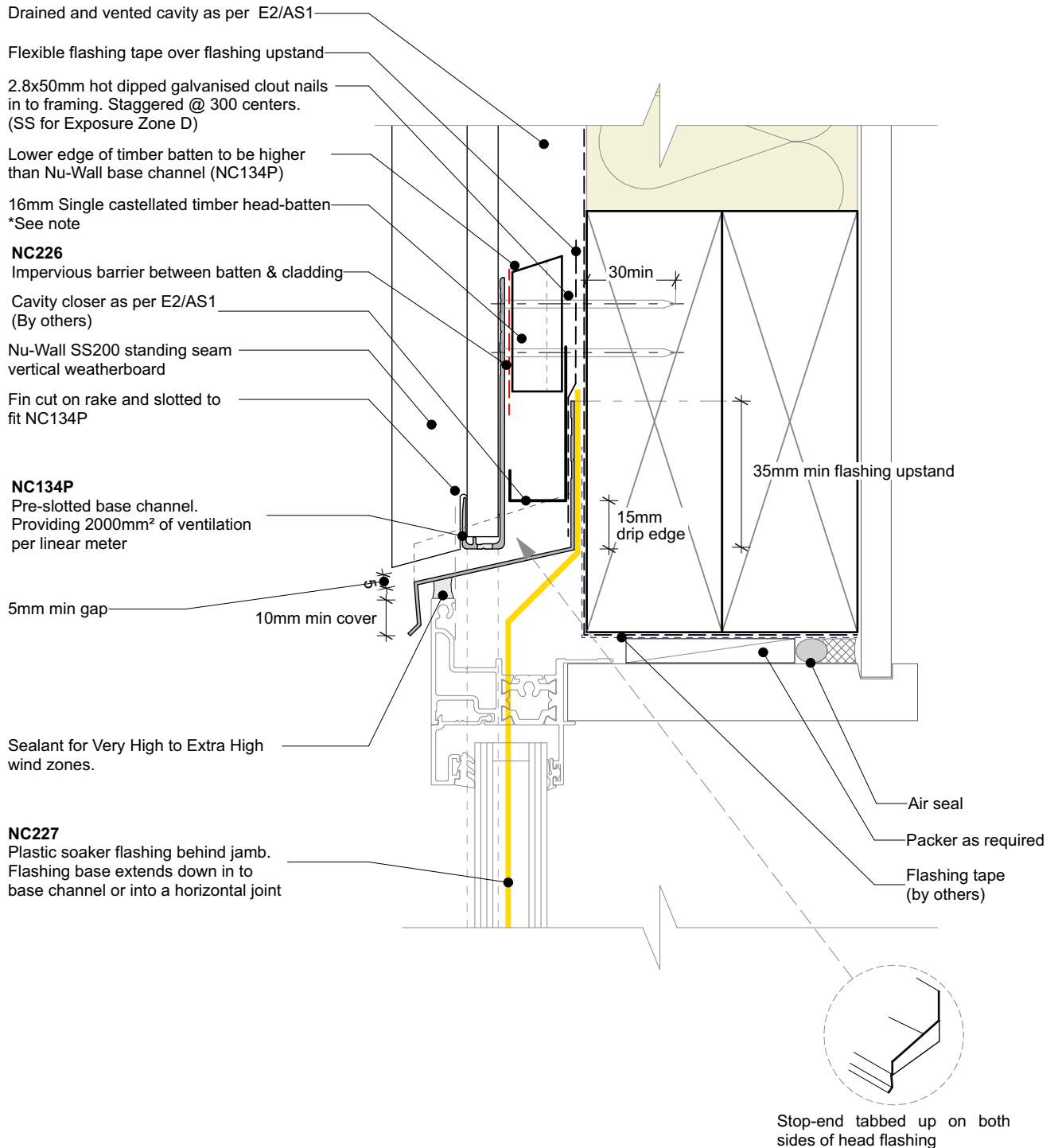


Cavity batten note:

- 20mm single castellated timber battens required for all Nu-Wall installations.
- Batten to have 15° slope for moisture egress
- Allow 6mm gap between vertical and horizontal battens
- Sill and head battens to be max. 500mm with a 6mm gap to each segment
- 18mm single castellated battens are available from Nu Wall for all vertical applications to wall junctions and jambs
- Proprietary Nu-Wall Alibat is available as an alternative when a structural non-combustable cavity batten is required



	Nu-Wall cladding SS200 vertical on cavity		NW-SS200-004.01	
	Typical inter storey joint - option 2		Drawn by: Nu-Wall	Date: 25/02/2025
	© 2021 copyright in this document is the property of Nu-Wall Aluminium Cladding Limited. All rights reserved. Nu-Wall is a registered trademark of Aluminium Product Brands NZ Limited		Checked by: RL, GT	Scale: 1:2 @ A4

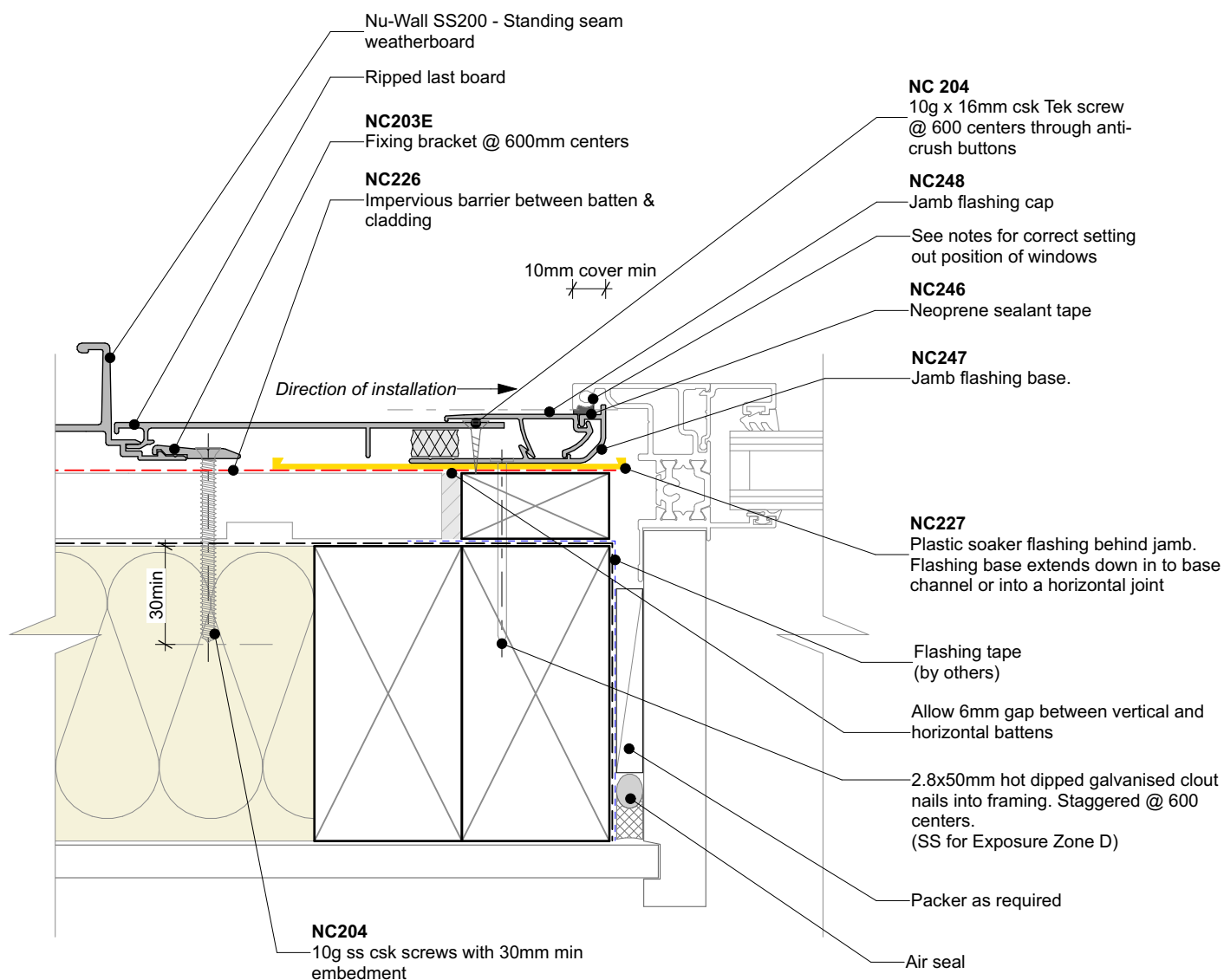


Cavity batten note:

- 20mm single castellated timber battens required for all Nu-Wall installations.
- Batten to have 15° slope for moisture egress
- Allow 6mm gap between vertical and horizontal battens
- Sill and head battens to be max. 500mm with a 6mm gap to each segment
- 18mm single castellated battens are available from Nu Wall for all vertical applications to wall junctions and jambs
- Proprietary Nu-Wall Alibat is available as an alternative when a structural non-combustable cavity batten is required



	Nu-Wall cladding SS200 vertical on cavity		NW-SS200-005.01	
	Typical window head section		Drawn by: Nu-Wall	Date: 25/02/2025
	© 2021 copyright in this document is the property of Nu-Wall Aluminium Cladding Limited. All rights reserved. Nu-Wall is a registered trademark of Aluminium Product Brands NZ Limited		Checked by: RL, GT	Scale: 1:2 @ A4



Cavity batten note:

- 20mm single castellated timber battens required for all Nu-Wall installations.
- Batten to have 15° slope for moisture egress
- Allow 6mm gap between vertical and horizontal battens
- Sill and head battens to be max. 500mm with a 6mm gap to each segment
- 18mm single castellated battens are available from Nu Wall for all vertical applications to wall junctions and jambs
- Proprietary Nu-Wall Alibat is available as an alternative when a structural non-combustable cavity batten is required

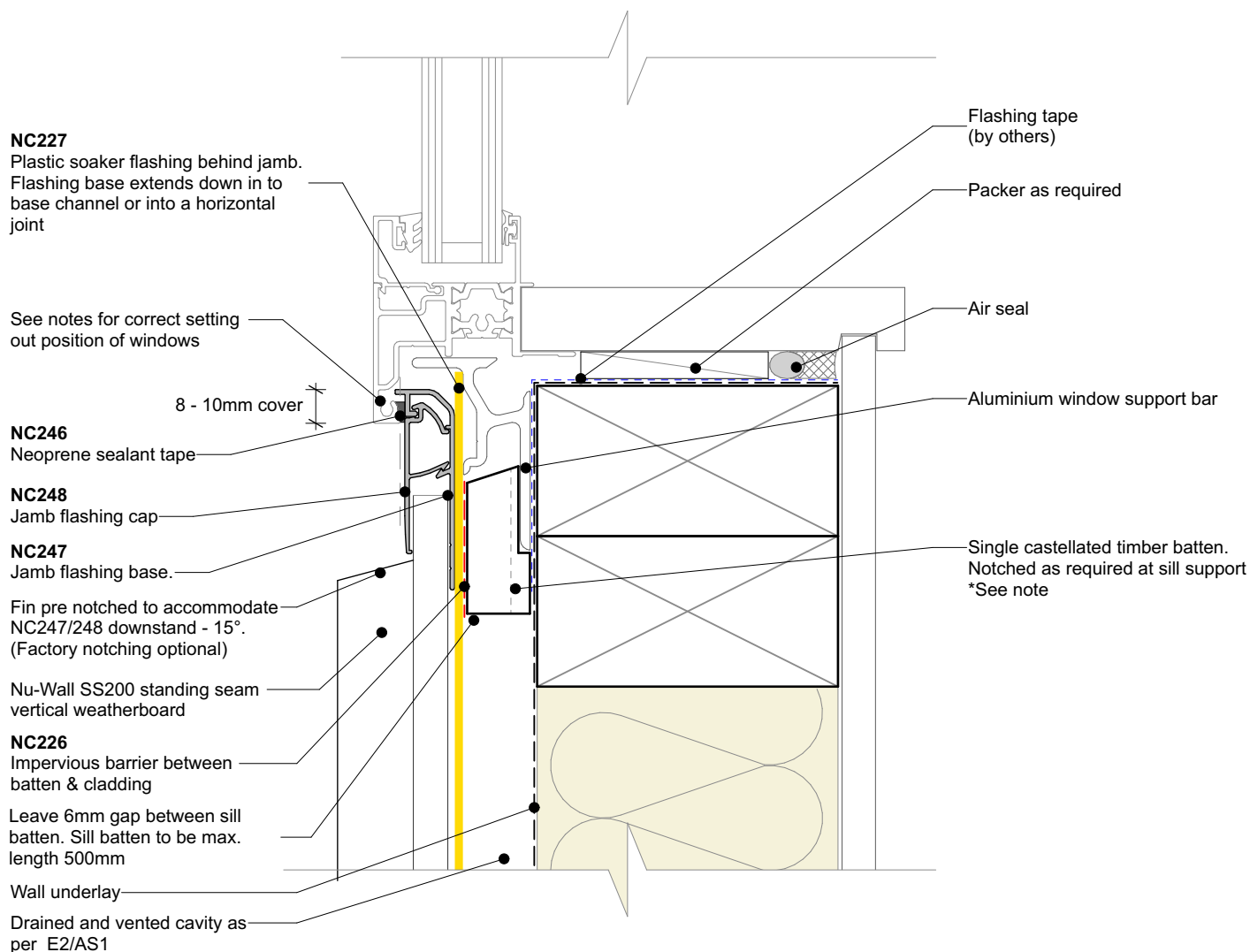


Nu-Wall cladding SS200 vertical on cavity Typical jamb section - NC247 and NC248 assembly

© 2021 copyright in this document is the property of Nu-Wall Aluminium Cladding Limited. All rights reserved. Nu-Wall is a registered trademark of Aluminium Product Brands NZ Limited

NW-SS200-006.01

Drawn by: Nu-Wall	Date: 25/02/2025
Checked by: RL, GT	Scale: 1:2 @ A4



Cavity batten note:

- 20mm single castellated timber battens required for all Nu-Wall installations.
- Batten to have 15° slope for moisture egress
- Allow 6mm gap between vertical and horizontal battens
- Sill and head battens to be max. 500mm with a 6mm gap to each segment
- 18mm single castellated battens are available from Nu Wall for all vertical applications to wall junctions and jambs
- Proprietary Nu-Wall Alibat is available as an alternative when a structural non-combustable cavity batten is required



Nu-Wall cladding SS200 vertical on cavity Typical sill section - NC247 and NC248 assembly

© 2021 copyright in this document is the property of Nu-Wall Aluminium Cladding Limited. All rights reserved. Nu-Wall is a registered trademark of Aluminium Product Brands NZ Limited

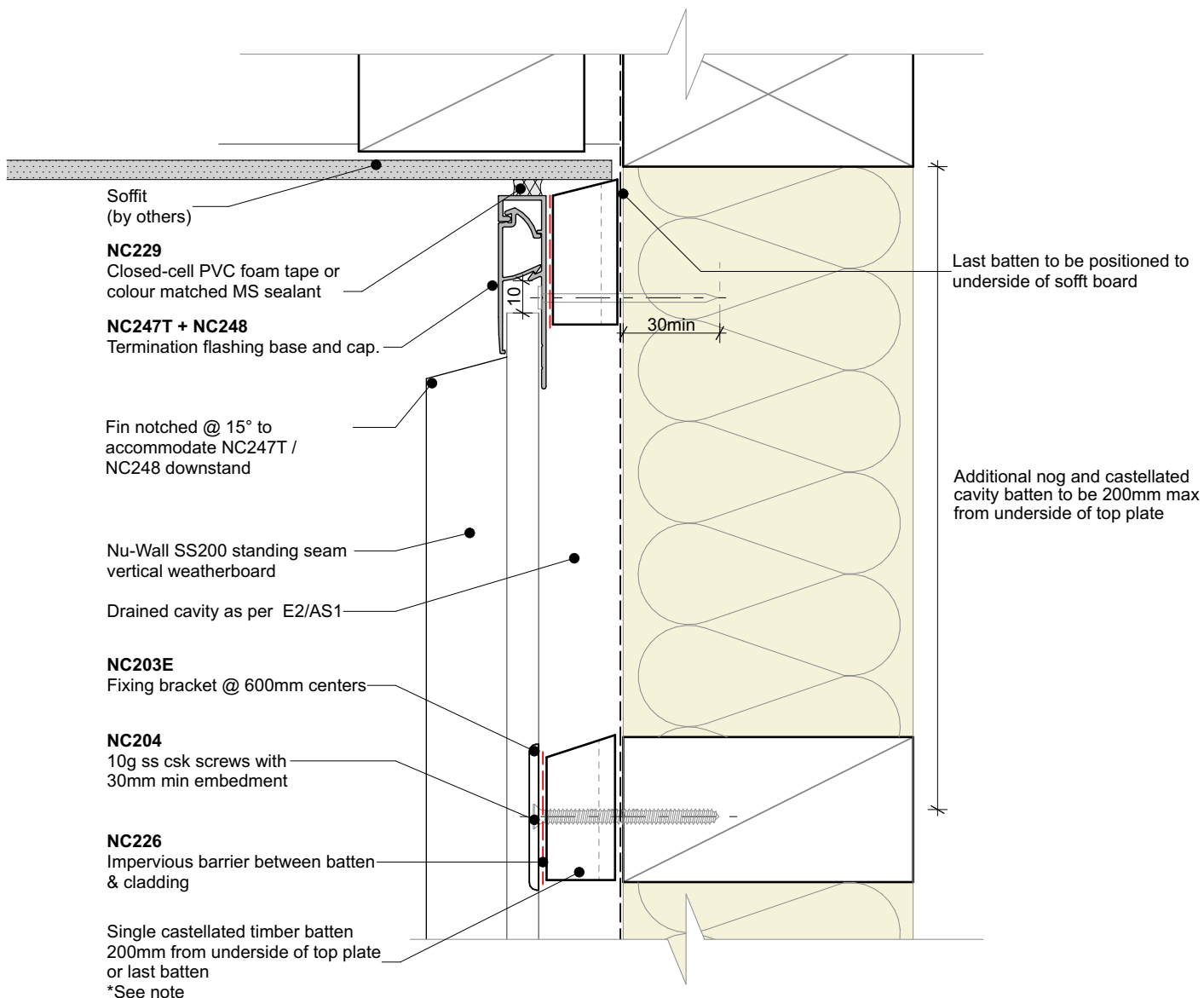
NW-SS200-007.01

Drawn by: Nu-Wall

Date: 25/02/2025

Checked by: RL, GT

Scale: 1:2 @ A4

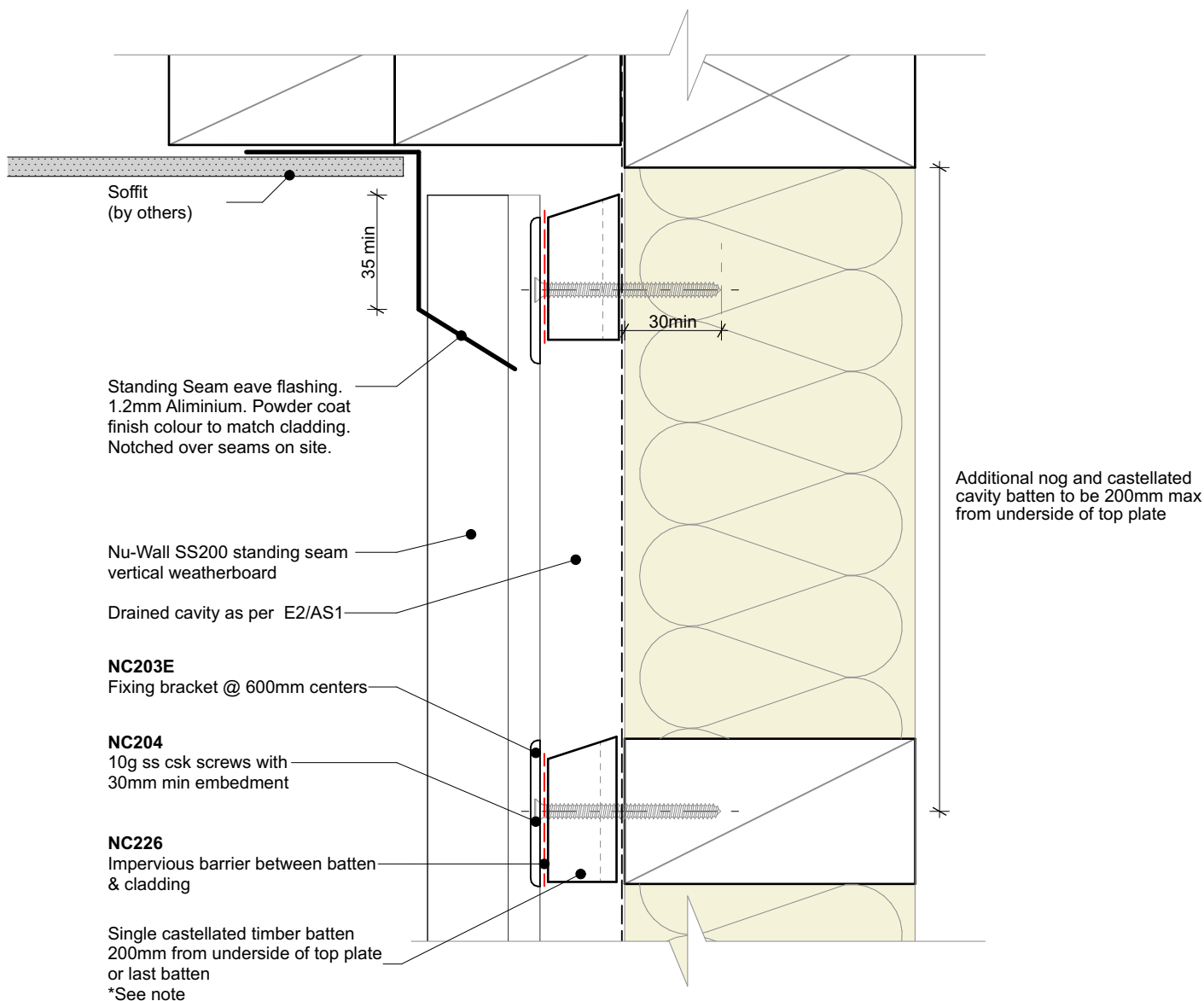


Cavity batten note:

- 20mm single castellated timber battens required for all Nu-Wall installations.
- Batten to have 15° slope for moisture egress
- Allow 6mm gap between vertical and horizontal battens
- Sill and head battens to be max. 500mm with a 6mm gap to each segment
- 18mm single castellated battens are available from Nu Wall for all vertical applications to wall junctions and jambs
- Proprietary Nu-Wall Alibat is available as an alternative when a structural non-combustable cavity batten is required



	Nu-Wall cladding SS200 vertical on cavity		NW-SS200-008.01	
	Typical soffit trim - Option 1		Drawn by: Nu-Wall	Date: 25/02/2025
	© 2021 copyright in this document is the property of Nu-Wall Aluminium Cladding Limited. All rights reserved. Nu-Wall is a registered trademark of Aluminium Product Brands NZ Limited		Checked by: RL, GT	Scale: 1:2 @ A4

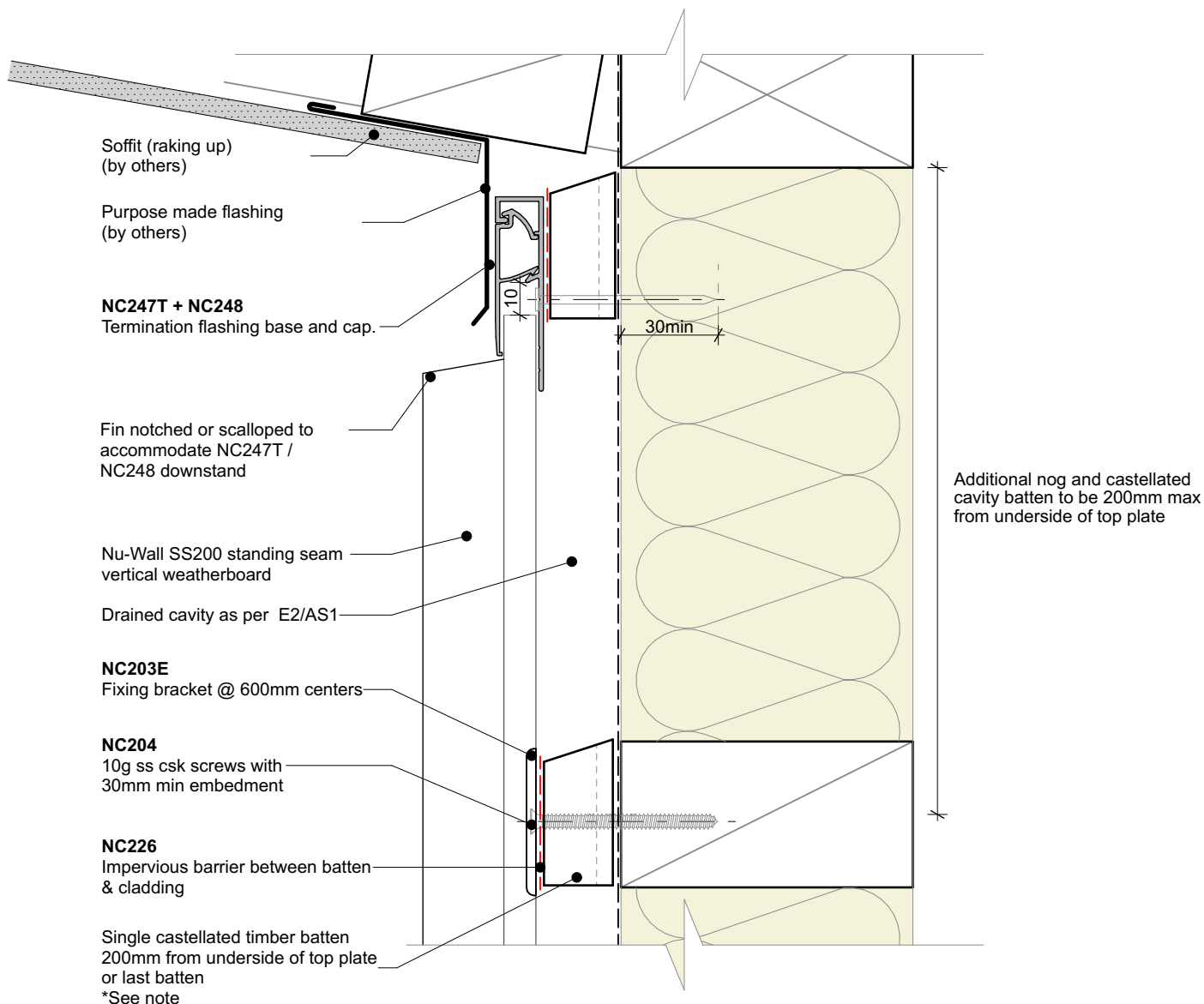


Cavity batten note:

- 20mm single castellated timber battens required for all Nu-Wall installations.
- Batten to have 15° slope for moisture egress
- Allow 6mm gap between vertical and horizontal battens
- Sill and head battens to be max. 500mm with a 6mm gap to each segment
- 18mm single castellated battens are available from Nu Wall for all vertical applications to wall junctions and jambs
- Proprietary Nu-Wall Alibat is available as an alternative when a structural non-combustable cavity batten is required



	Nu-Wall cladding SS200 vertical on cavity		NW-SS200-009.01	
	Typical soffit trim - Option 2		Drawn by: Nu-Wall	Date: 25/02/2025
	© 2021 copyright in this document is the property of Nu-Wall Aluminium Cladding Limited. All rights reserved. Nu-Wall is a registered trademark of Aluminium Product Brands NZ Limited		Checked by: RL, GT	Scale: 1:2 @ A4

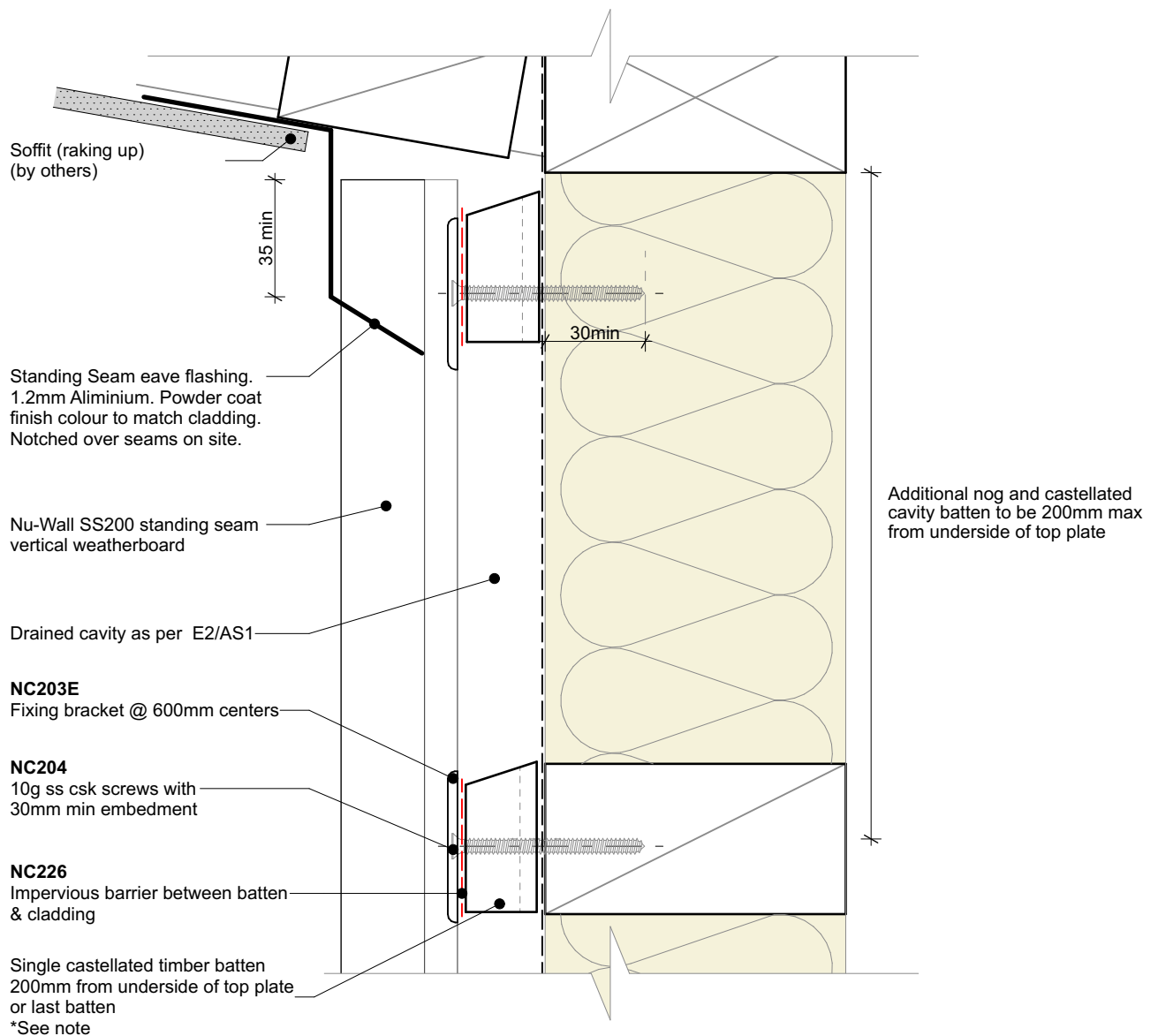


Cavity batten note:

- 20mm single castellated timber battens required for all Nu-Wall installations.
- Batten to have 15° slope for moisture egress
- Allow 6mm gap between vertical and horizontal battens
- Sill and head battens to be max. 500mm with a 6mm gap to each segment
- 18mm single castellated battens are available from Nu Wall for all vertical applications to wall junctions and jambs
- Proprietary Nu-Wall Alibat is available as an alternative when a structural non-combustable cavity batten is required



	Nu-Wall cladding SS200 vertical on cavity		NW-SS200-010.01	
	Typical raking soffit - Option 1		Drawn by: Nu-Wall	Date: 25/02/2025
	© 2021 copyright in this document is the property of Nu-Wall Aluminium Cladding Limited. All rights reserved. Nu-Wall is a registered trademark of Aluminium Product Brands NZ Limited		Checked by: RL, GT	Scale: 1:2 @ A4

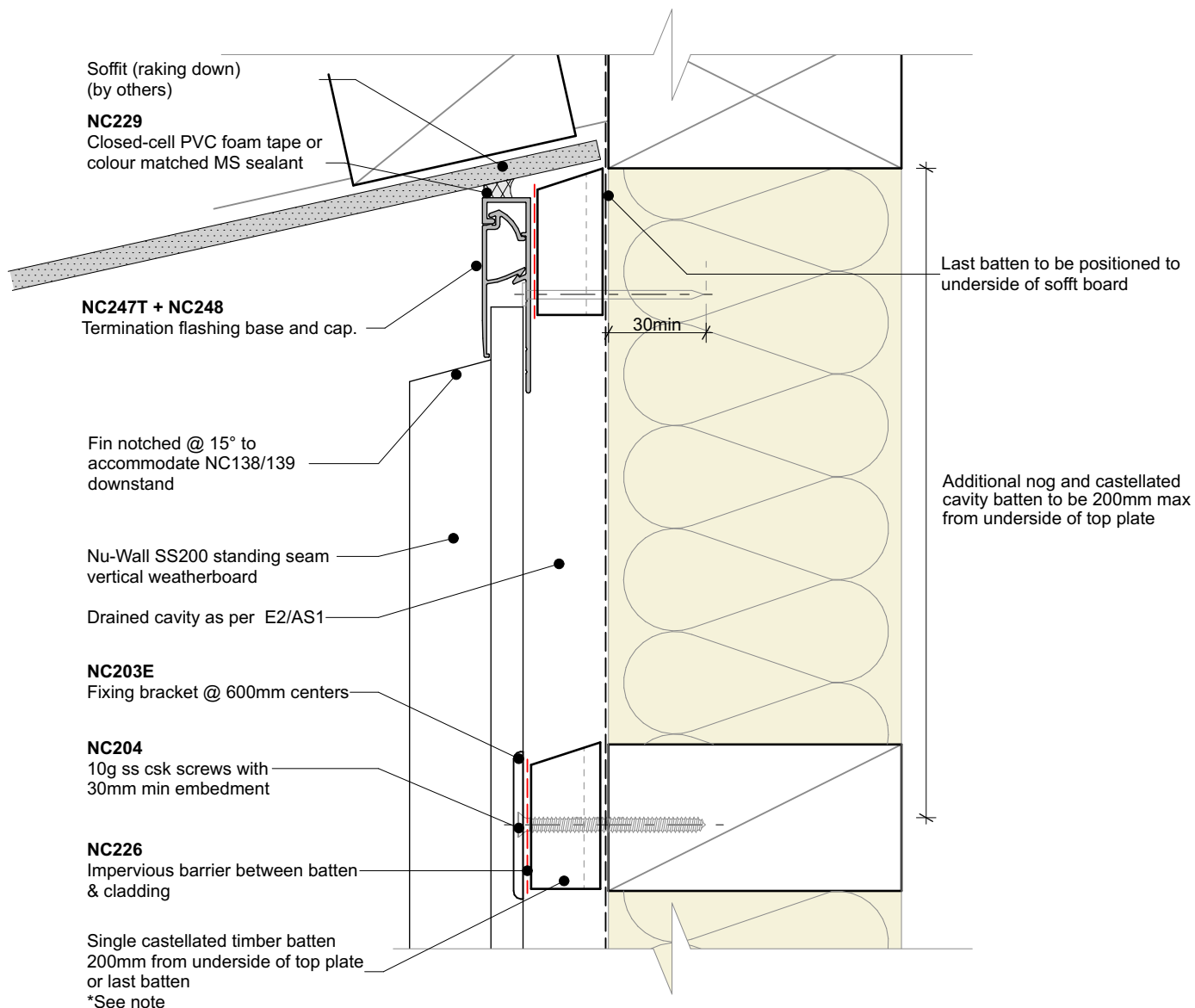


Cavity batten note:

- 20mm single castellated timber battens required for all Nu-Wall installations.
- Batten to have 15° slope for moisture egress
- Allow 6mm gap between vertical and horizontal battens
- Sill and head battens to be max. 500mm with a 6mm gap to each segment
- 18mm single castellated battens are available from Nu Wall for all vertical applications to wall junctions and jambs
- Proprietary Nu-Wall Alibat is available as an alternative when a structural non-combustable cavity batten is required



	Nu-Wall cladding SS200 vertical on cavity		NW-SS200-011.01	
	Typical raking soffit - Option 2		Drawn by: Nu-Wall	Date: 25/02/2025
	© 2021 copyright in this document is the property of Nu-Wall Aluminium Cladding Limited. All rights reserved. Nu-Wall is a registered trademark of Aluminium Product Brands NZ Limited		Checked by: RL, GT	Scale: 1:2 @ A4

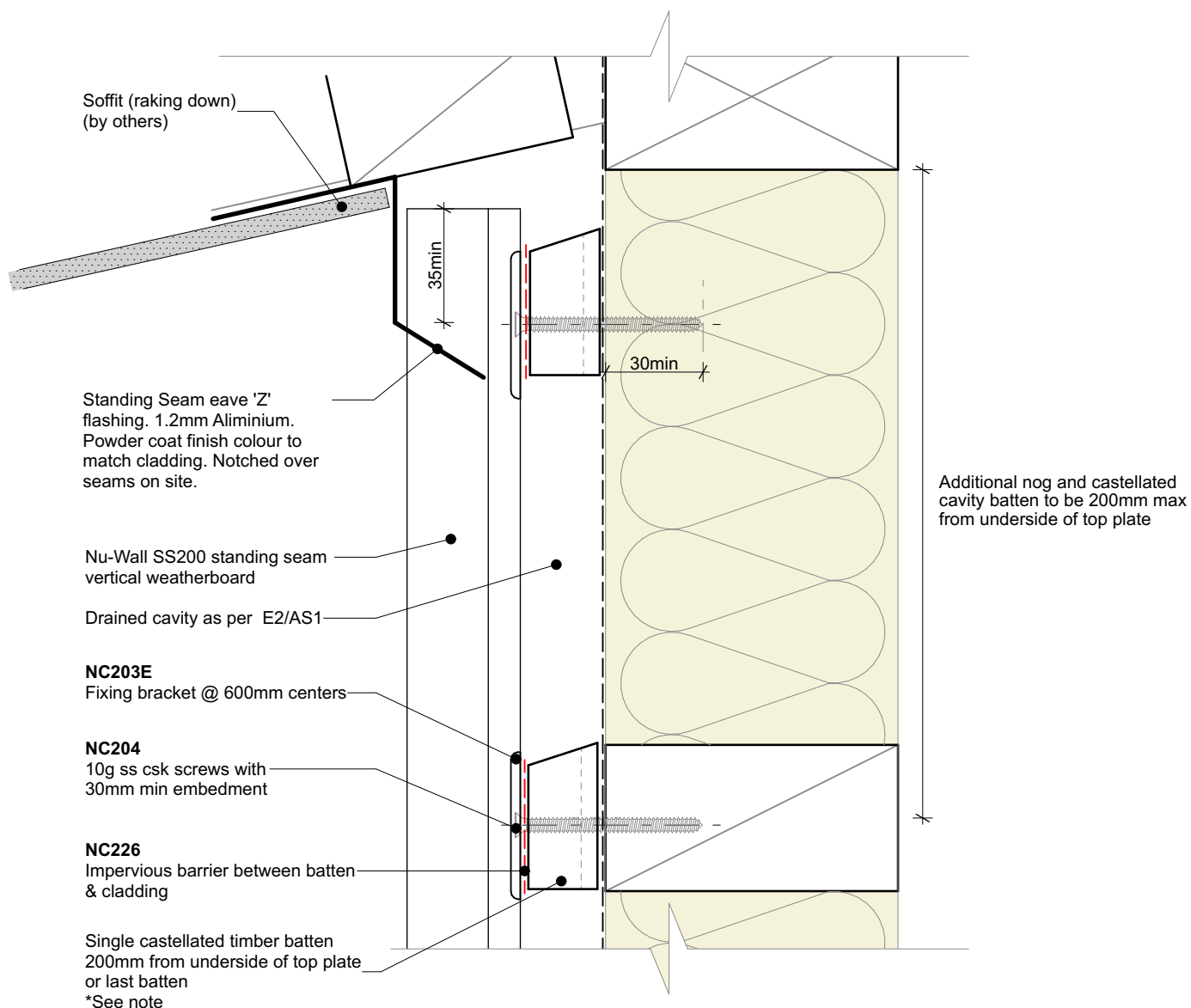


Cavity batten note:

- 20mm single castellated timber battens required for all Nu-Wall installations.
- Batten to have 15° slope for moisture egress
- Allow 6mm gap between vertical and horizontal battens
- Sill and head battens to be max. 500mm with a 6mm gap to each segment
- 18mm single castellated battens are available from Nu Wall for all vertical applications to wall junctions and jambs
- Proprietary Nu-Wall Alibat is available as an alternative when a structural non-combustable cavity batten is required



	Nu-Wall cladding SS200 vertical on cavity		NW-SS200-012.01	
	Typical inverse raking soffit - Option 1		Drawn by: Nu-Wall	Date: 25/02/2025
	© 2021 copyright in this document is the property of Nu-Wall Aluminium Cladding Limited. All rights reserved. Nu-Wall is a registered trademark of Aluminium Product Brands NZ Limited		Checked by: RL, GT	Scale: 1:2 @ A4

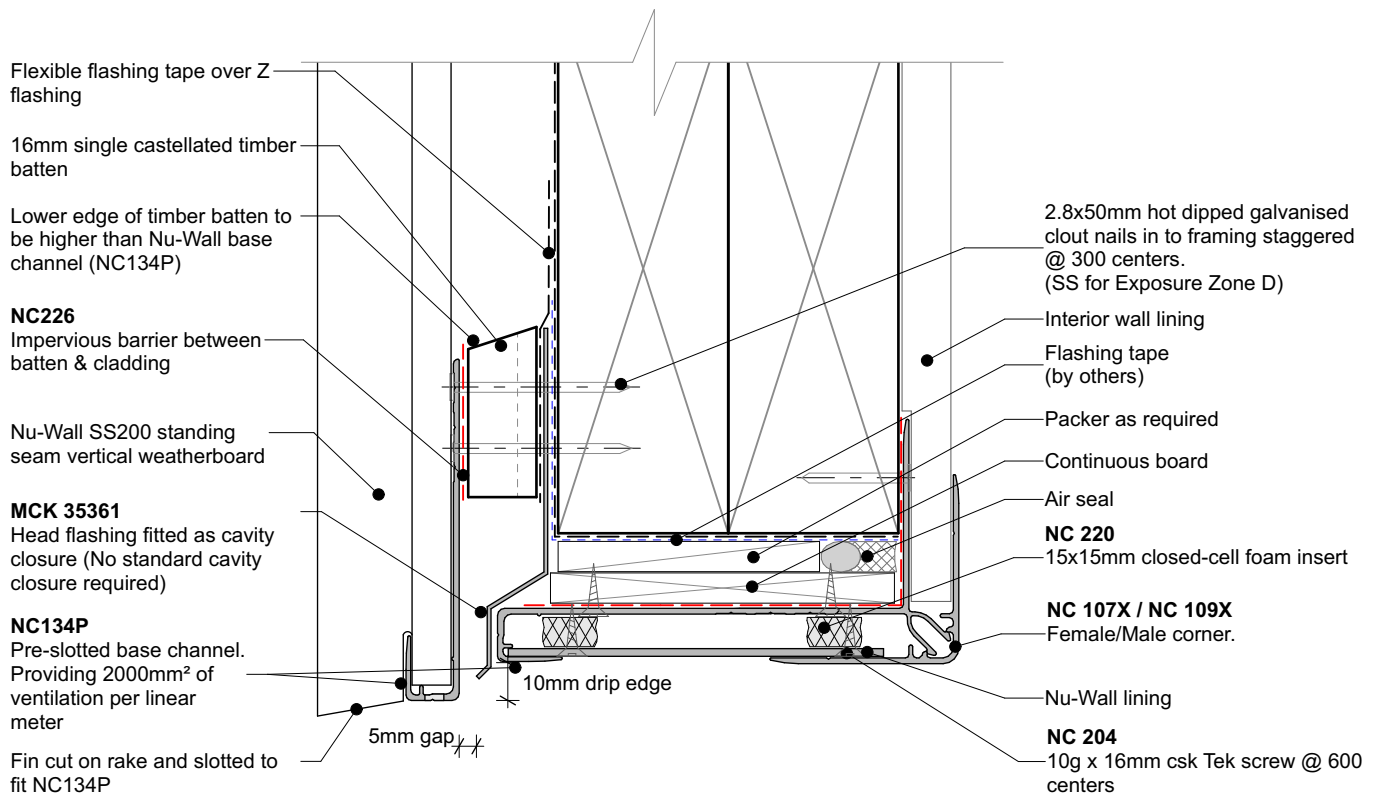


Cavity batten note:

- 20mm single castellated timber battens required for all Nu-Wall installations.
- Batten to have 15° slope for moisture egress
- Allow 6mm gap between vertical and horizontal battens
- Sill and head battens to be max. 500mm with a 6mm gap to each segment
- 18mm single castellated battens are available from Nu Wall for all vertical applications to wall junctions and jambs
- Proprietary Nu-Wall Alibat is available as an alternative when a structural non-combustable cavity batten is required



	Nu-Wall cladding SS200 vertical on cavity		NW-SS200-013.01	
	Typical inverse raking soffit - Option 2		Drawn by: Nu-Wall	Date: 25/02/2025
	© 2021 copyright in this document is the property of Nu-Wall Aluminium Cladding Limited. All rights reserved. Nu-Wall is a registered trademark of Aluminium Product Brands NZ Limited		Checked by: RL, GT	Scale: 1:2 @ A4



GARAGE DOOR HEAD (Nu-Wall reveal)

Cavity batten note:

- 20mm single castellated timber battens required for all Nu-Wall installations.
- Batten to have 15° slope for moisture egress
- Allow 6mm gap between vertical and horizontal battens
- Sill and head battens to be max. 500mm with a 6mm gap to each segment
- 18mm single castellated battens are available from Nu Wall for all vertical applications to wall junctions and jambs
- Proprietary Nu-Wall Alibat is available as an alternative when a structural non-combustable cavity batten is required



nu-wall
CLADDING

Nu-Wall cladding SS200 vertical on cavity
Typical garage door head (Nu-Wall Reveal Profile)

© 2021 copyright in this document is the property of Nu-Wall Aluminium Cladding Limited. All rights reserved. Nu-Wall is a registered trademark of Aluminium Product Brands NZ Limited

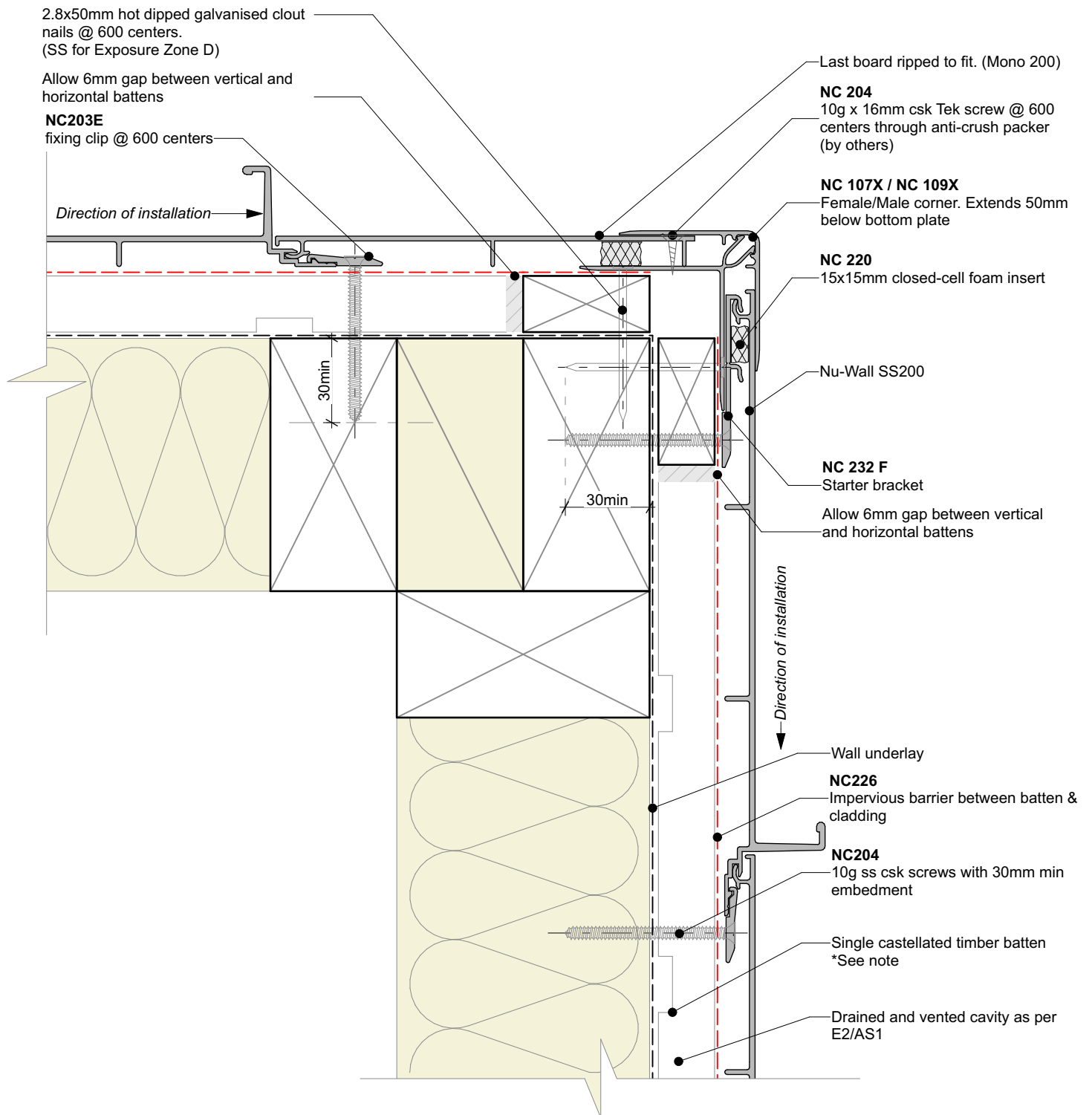
NW-SS200-014.01

Drawn by: Nu-Wall

Date: 25/02/2025

Checked by: RL, GT

Scale: 1:2 @ A4



Cavity batten note:

- 20mm single castellated timber battens required for all Nu-Wall installations.
- Batten to have 15° slope for moisture egress
- Allow 6mm gap between vertical and horizontal battens
- Sill and head battens to be max. 500mm with a 6mm gap to each segment
- 18mm single castellated battens are available from Nu Wall for all vertical applications to wall junctions and jambs
- Proprietary Nu-Wall Alibat is available as an alternative when a structural non-combustable cavity batten is required



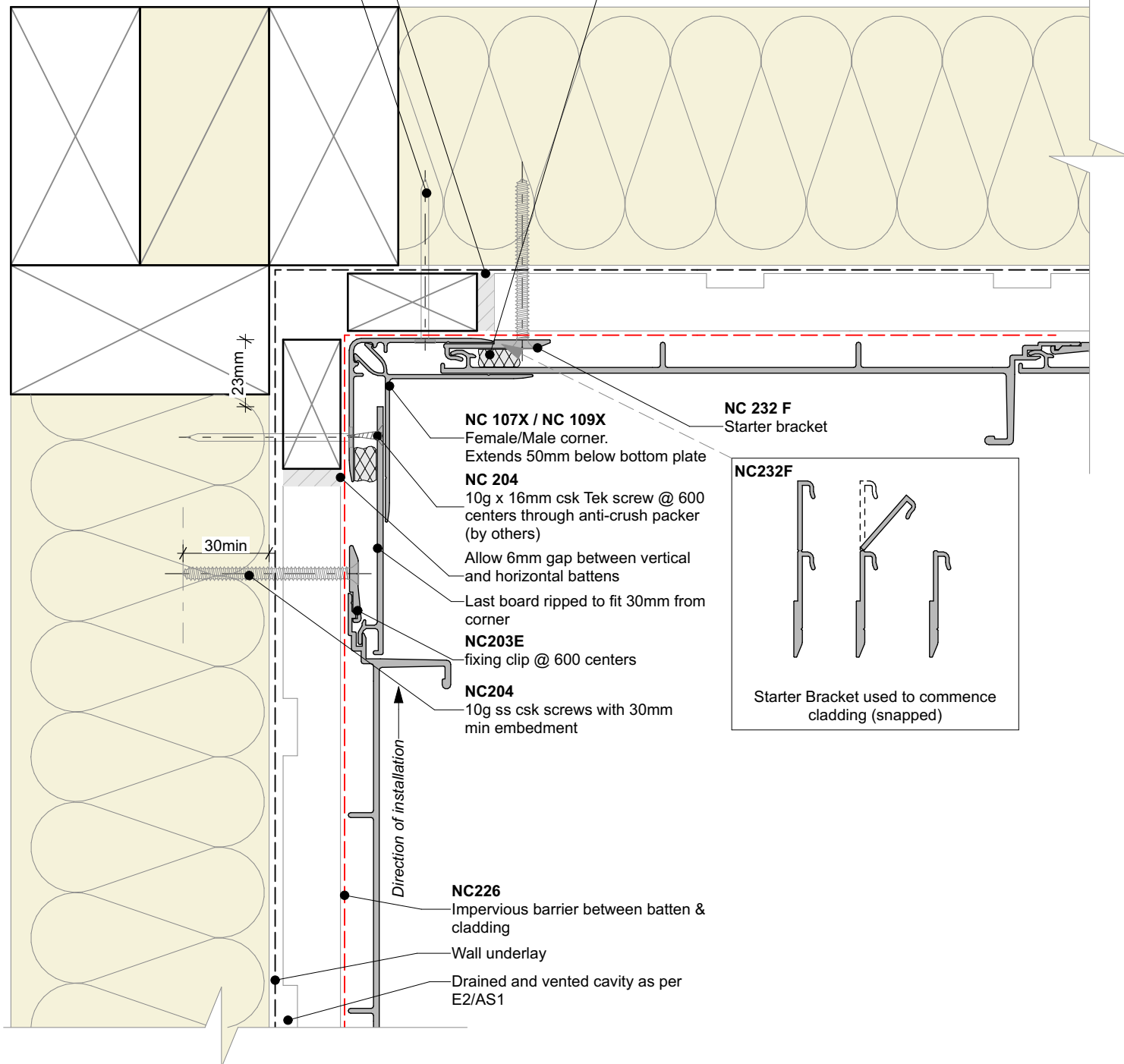
	Nu-Wall cladding SS200 vertical on cavity		NW-SS200-015.01	
	External 90 deg corner using NC107X and NC109X		Drawn by: Nu-Wall	Date: 25/02/2025
	© 2021 copyright in this document is the property of Nu-Wall Aluminium Cladding Limited. All rights reserved. Nu-Wall is a registered trademark of Aluminium Product Brands NZ Limited		Checked by: RL, GT	Scale: 1:2 @ A4

Allow 6mm gap between vertical and horizontal battens

2.8x50mm hot dipped galvanised clout nails @ 600 centers.
(SS for Exposure Zone D)

NC 220

15x15mm closed-cell foam insert



Cavity batten note:

- 20mm single castellated timber battens required for all Nu-Wall installations.
- Batten to have 15° slope for moisture egress
- Allow 6mm gap between vertical and horizontal battens
- Sill and head battens to be max. 500mm with a 6mm gap to each segment
- 18mm single castellated battens are available from Nu Wall for all vertical applications to wall junctions and jambs
- Proprietary Nu-Wall Alibat is available as an alternative when a structural non-combustable cavity batten is required



nu-wall
CLADDING

Nu-Wall cladding SS200 vertical on cavity
Internal 90 deg. corner using NC107X and NC109X

© 2021 copyright in this document is the property of Nu-Wall Aluminium Cladding Limited. All rights reserved. Nu-Wall is a registered trademark of Aluminium Product Brands NZ Limited

NW-SS200-016.01

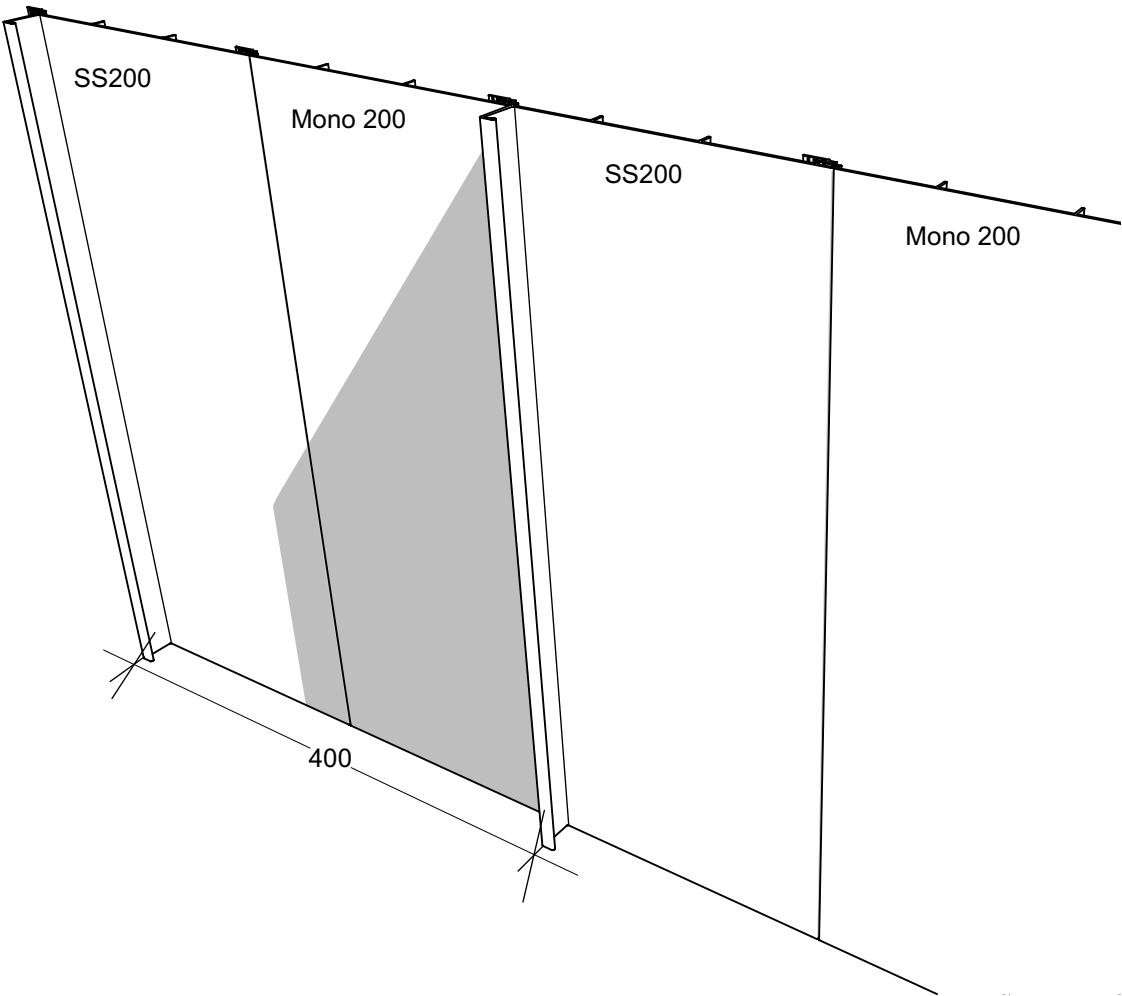
Drawn by: Nu-Wall

Date: 25/02/2025

Checked by: RL, GT

Scale: 1:2 @ A4

Board combination of SS200 and Mono 200 for a 400 wide panel



Cavity batten note:

- 20mm single castellated timber battens required for all Nu-Wall installations.
- Batten to have 15° slope for moisture egress
- Allow 6mm gap between vertical and horizontal battens
- Sill and head battens to be max. 500mm with a 6mm gap to each segment
- 18mm single castellated battens are available from Nu Wall for all vertical applications to wall junctions and jambs
- Proprietary Nu-Wall Alibat is available as an alternative when a structural non-combustable cavity batten is required



Nu-Wall cladding SS200 vertical on cavity	
SS200 and Mono 200 Combination	
© 2021 copyright in this document is the property of Nu-Wall Aluminium Cladding Limited. All rights reserved. Nu-Wall is a registered trademark of Aluminium Product Brands NZ Limited	

NW-SS200-017.01	
Drawn by: Nu-Wall	Date: 25/02/2025
Checked by: RL, GT	Scale: NTS