

NC204

10g ss csk screws with 30mm min embedment

NC203E

Fixing bracket @ 600mm centers

NC226

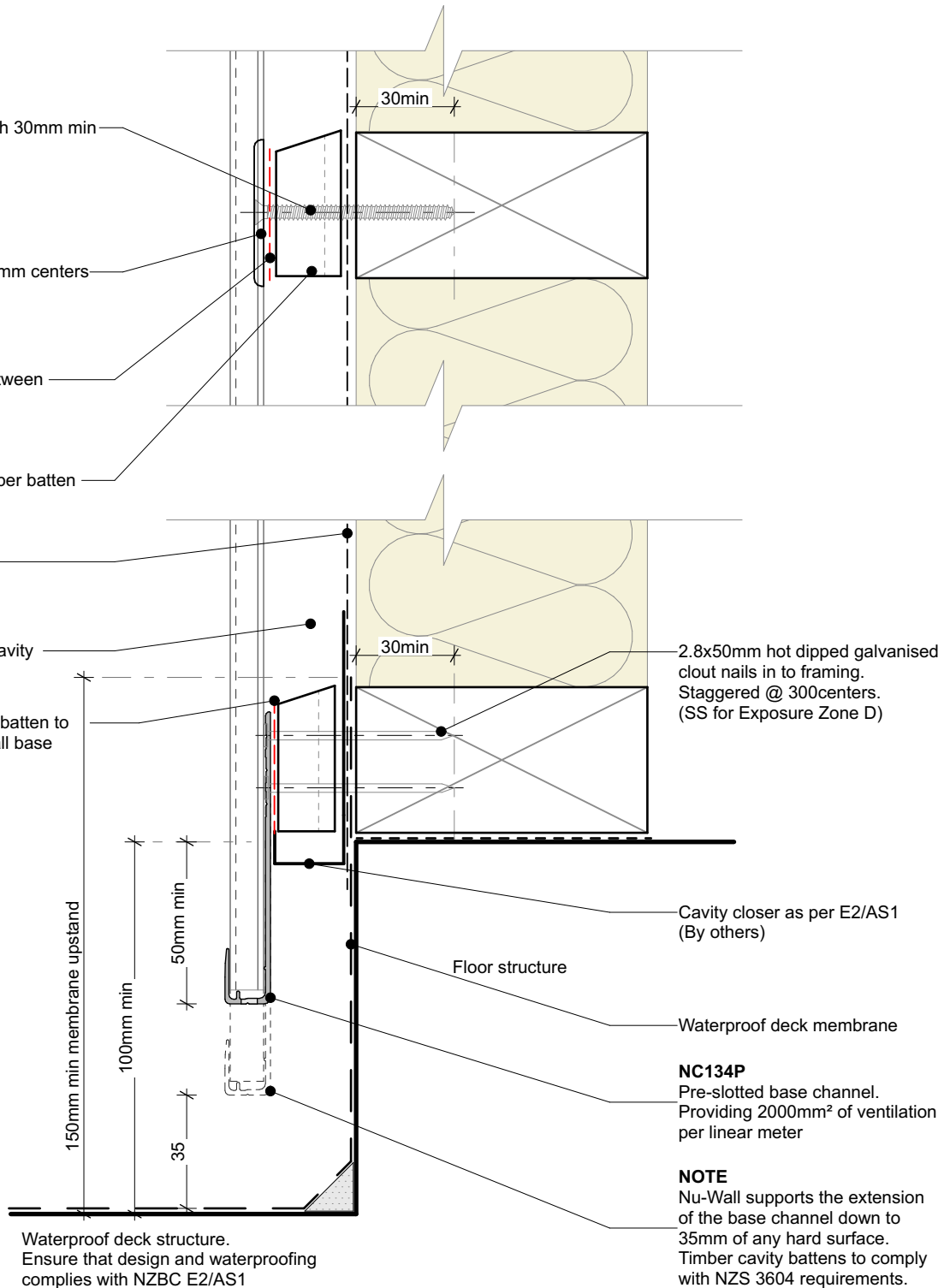
Impervious barrier between batten & cladding

Single castellated timber batten
*See note

Wall underlay

Drained and vented cavity as per E2/AS1

Lower edge of timber batten to be higher than Nu-Wall base channel (NC134P)

**NC134P**

Pre-slotted base channel.
Providing 2000mm² of ventilation
per linear meter

NOTE

Nu-Wall supports the extension
of the base channel down to
35mm of any hard surface.
Timber cavity battens to comply
with NZS 3604 requirements.

Cavity batten note:

- 20mm single castellated timber battens required for all Nu-Wall installations.
- Batten to have 15° slope for moisture egress
- Allow 6mm gap between vertical and horizontal battens
- Sill and head battens to be max. 500mm with a 6mm gap to each segment
- 18mm single castellated battens are available from Nu Wall for all vertical applications to wall junctions and jambs
- Proprietary Nu-Wall Alibat is available as an alternative when a structural non-combustable cavity batten is required



nu-wall
CLADDING

Nu-Wall cladding vertical on cavity

Typical base channel over waterproof deck

© 2021 copyright in this document is the property of Nu-Wall Aluminium Cladding Limited. All rights reserved. Nu-Wall is a registered trademark of Aluminium Product Brands NZ Limited

NW-VOC-007.02

Drawn by: Nu-Wall

Date: 25/02/2025

Checked by: RL, GT

Scale: 1:2 @ A4