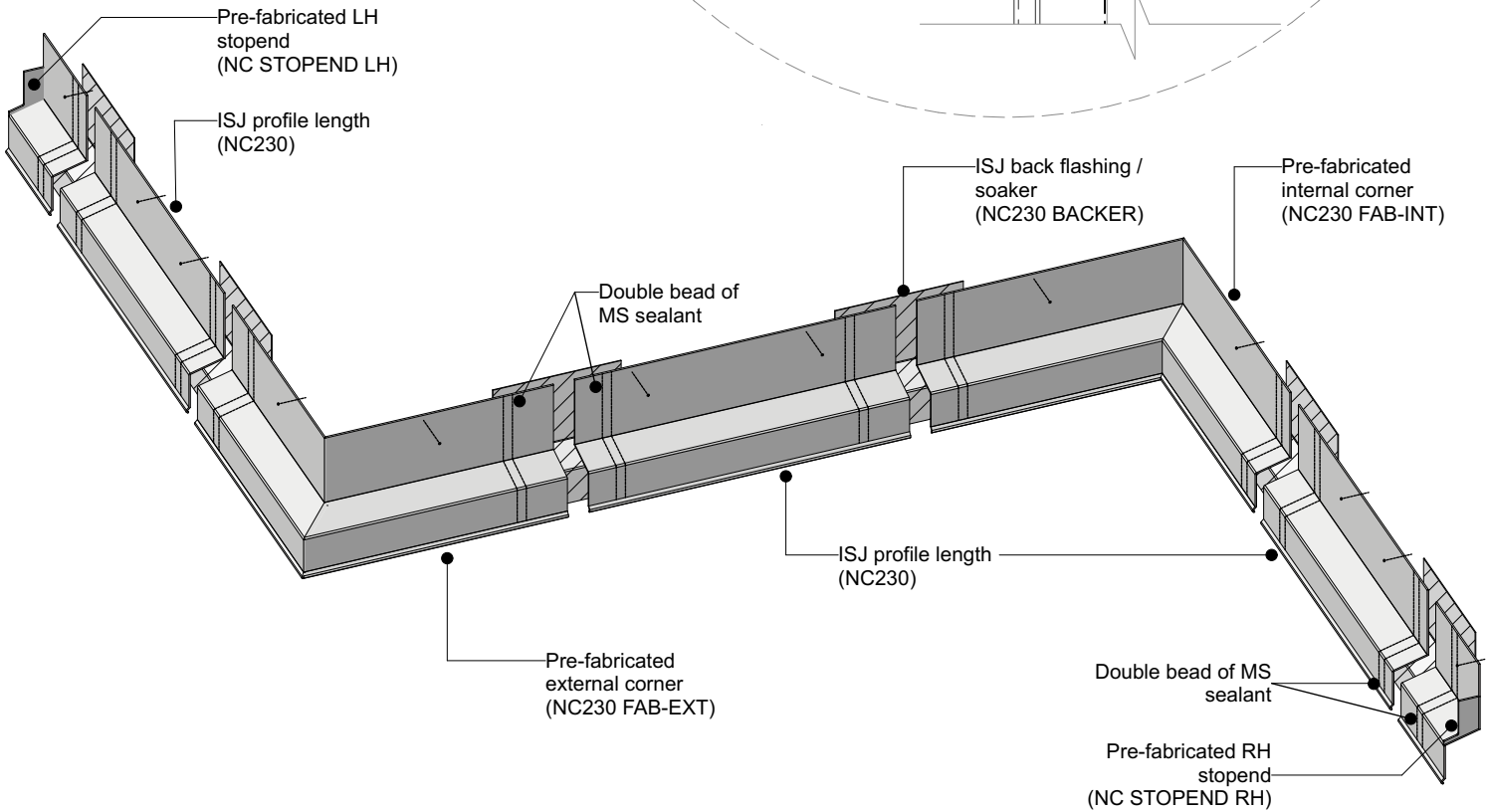
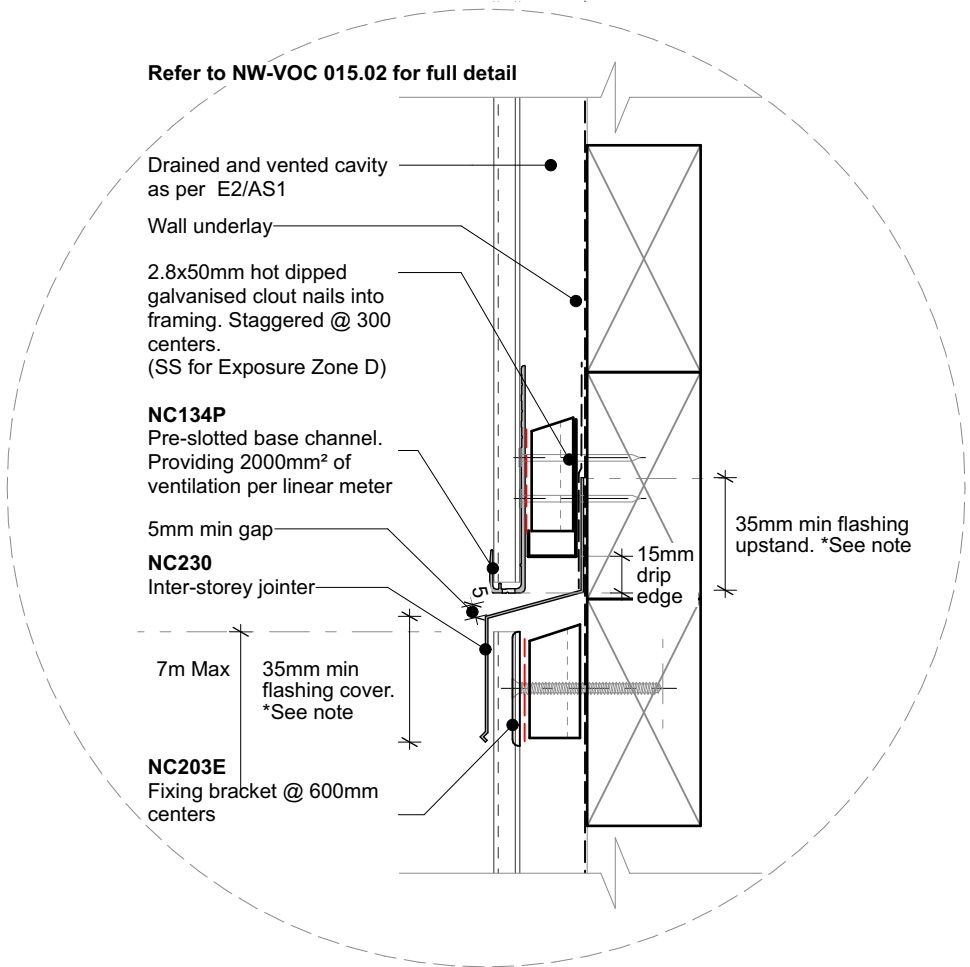


Refer to NW-VOC 015.02 for full detail



Notes:

- Prefabricated components welded and powder coated to match boards
- All ISJ components are manufactured for 20mm cavity design. Any deeper cavity designs will require additional custom fabrication



Nu-Wall cladding
Inter Story Junction Detail

© 2021 copyright in this document is the property of Nu-Wall Aluminium Cladding Limited. All rights reserved. Nu-Wall is a registered trademark of Aluminium Product Brands NZ Limited

NW- ISJ ASSEMBLY.01

| | |
|--------------------|---------------|
| Drawn by: Nu-Wall | Date: 28/2/23 |
| Checked by: RL, GT | Scale: NTS |