

Drained and vented cavity as per E2/AS1

**NC226**

Impervious barrier (MDPE or similar) between batten & cladding

Cut / ripped board

**NC204**

10g ss csk screws with 30mm min embedment

**NC 220**

15x15mm closed-cell foam insert

**NC 204**

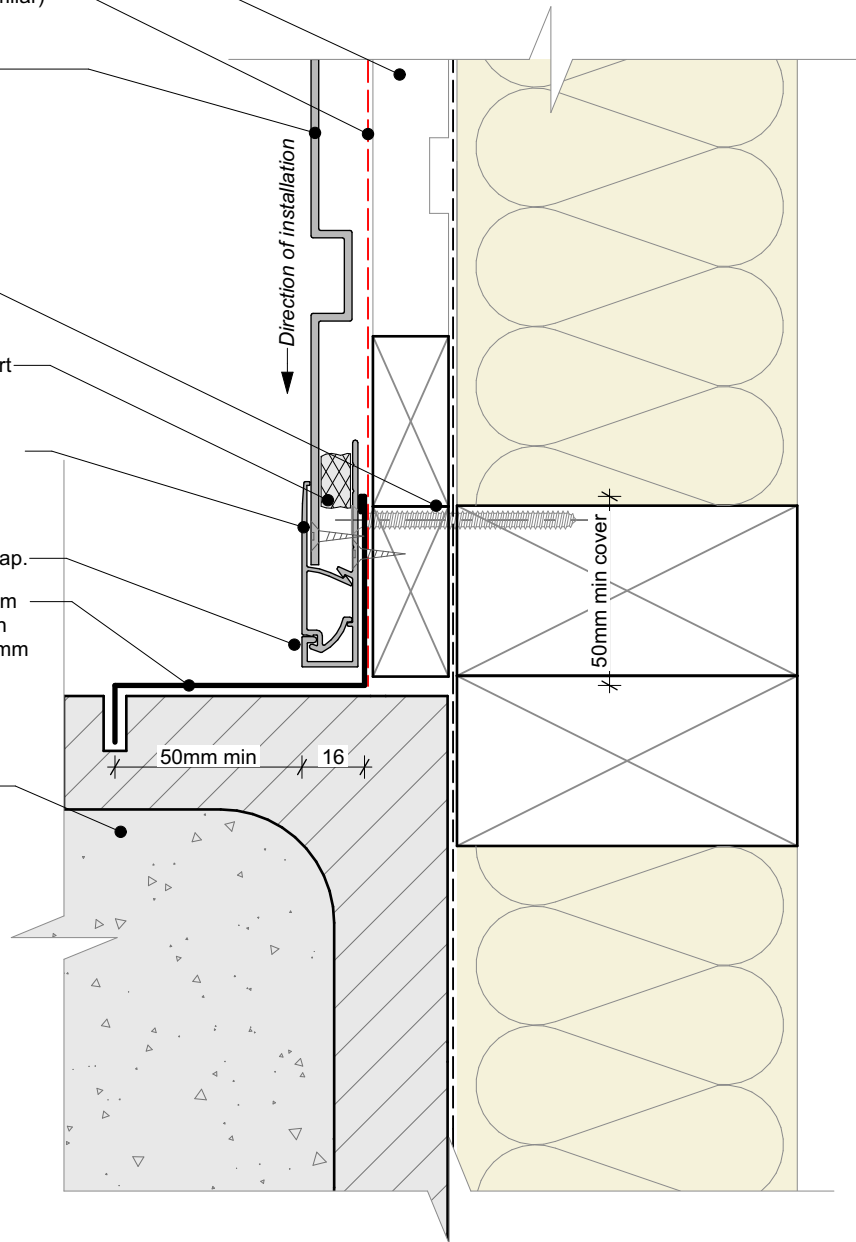
10g x 16mm csk Tek screw @ 600 centers through anti-crush packer (by others)

**NC247T + NC248**

Termination flashing base and cap.

Custom folded 1.2mm aluminium flashing powder coated to match cladding and chased in to 15x6mm saw cut and sealed with flexible joint sealant (By others)

Concrete masonry block wall



**General note:**

- Cladding fixings omitted for clarity
- When finishing a wall with a ripped board, the board must be direct fixed with a counter sunk screw @ 600mm centres

**Cavity batten note:**

- 20mm single castellated timber battens required for all Nu-Wall installations.
- Batten to have 15° slope for moisture egress
- 18mm single castellated battens are available from Nu Wall for all vertical applications to wall junctions and jambs
- Proprietary Nu-Wall Alibat is available as an alternative when a structural non-combustable cavity batten is required



Nu-Wall cladding vertical on cavity  
Typical Nu-Wall to concrete masonry internal corner

NW-VOC-039.03

Drawn by: Nu-Wall	Date: 19/9/2024
Checked by: RL, GT	Scale: 1:2 @ A4

© 2021 copyright in this document is the property of Nu-Wall Aluminium Cladding Limited. All rights reserved. Nu-Wall is a registered trademark of Aluminium Product Brands NZ Limited