

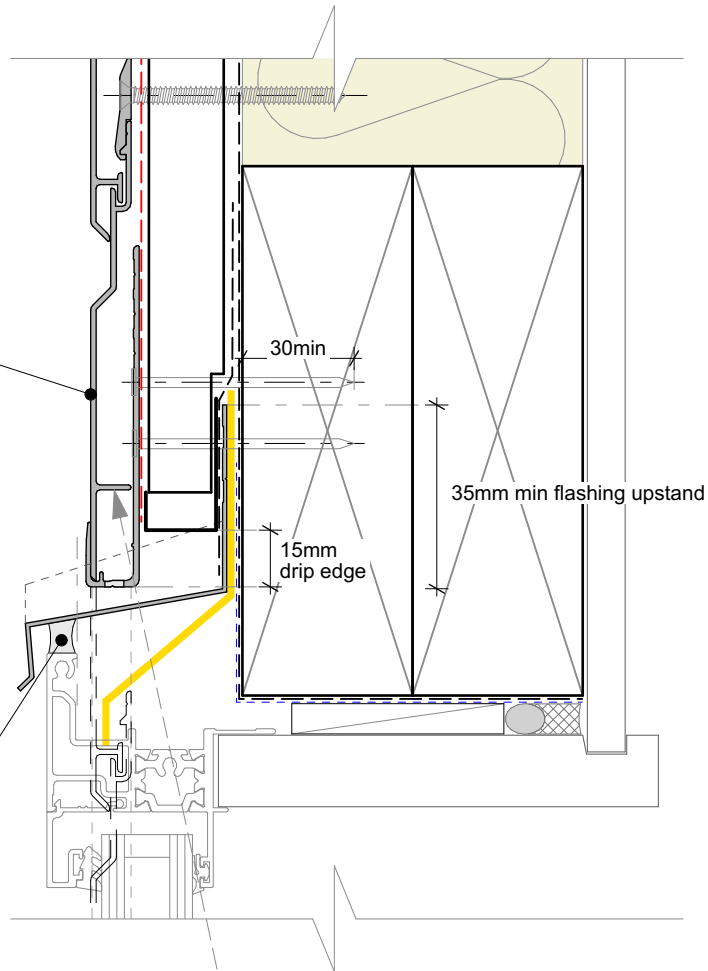
Selected Nu-Wall cladding

Notched around window head flashing

NOTE:

Some detail notes omitted for clarity refer to NW-HOC-019 for complete head section drawings

Sealant for Very High to Extra High wind zones.

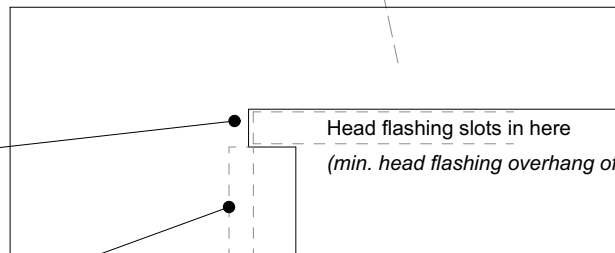


Board notched for window

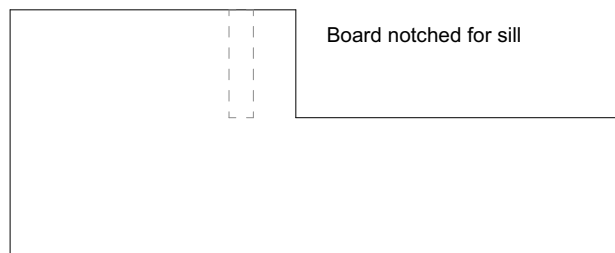
Head flashing slots in here

(min. head flashing overhang of 50mm as per E2/AS1)

15mm profiled closed cell foam insert end caps to suit profile of cladding



Board notched for sill



Note:

- Where possible, set out boards so to have a full/un-notched board running above the head flashing.

Cavity batten note:

- 20mm timber battens required for all Nu-Wall horizontal board installations
- Batten to have 15° slope for moisture egress
- Battens to all internal, external corners, jambs, and sills to be sized to 18mm to accommodate flashing build up
- 20 and 18mm single castellated battens are available directly from Nu Wall
- Proprietary Nu-Wall AliBat is available as an alternative when a structural non-combustible batten is required

Interactive assembly instructions available

<http://wkspec.nu-wall.co.nz/nw-hoc-win2>



Get WORKINGSPEC from Apple App Store/Google Play



BRANZ Appraised
Appraisal No. 550 [2019]



Nu-Wall cladding horizontal on cavity

Notching board around window head and sill

NW-HOC-027.02

Drawn by: Nu-Wall

Date: 20/9/22

Checked by: RL, GT

Scale: NTS

© 2021 copyright in this document is the property of Nu-Wall Aluminium Cladding Limited. All rights reserved. Nu-Wall is a registered trademark of Aluminium Product Brands NZ Limited