

nu-wall[®]

ALUMINIUM CLADDING

Design for a weathertight future



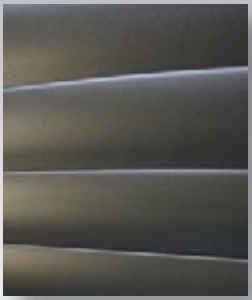
nu-wall profiles

Ripple



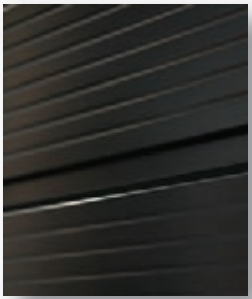
The micro-corrugated profile is available in 150mm width or 190mm for speedy application on large areas. Suits both horizontal and vertical cladding applications.

Aero 70



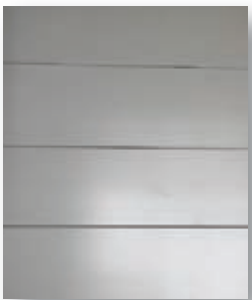
The stylish aerofoil profile is available in 140mm (2 x 70), 115mm or 190mm (2 x 95) width options. Suits both horizontal and vertical cladding applications.

Classique



A traditional horizontal weatherboard with a grooved face. 136mm wide.

Mono 190



The flat profile offers a cost-effective alternative to composite sheet aluminium. 190mm wide and suitable for both horizontal and vertical cladding applications.

Ullos



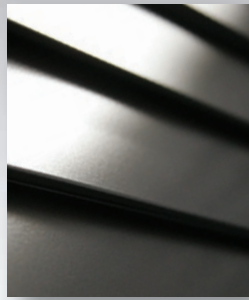
Conceived by a leading New Zealand architect, this funky zig-zag profile with 162mm width is suitable for both horizontal and vertical cladding applications.

Louvre 30



120mm wide; the 4 x 30mm blades giving the appearance of a venetian blind. Most suitable for interior features or integration into furniture.

Louvre 60



A modern take on the bevel-back weatherboard with 2 x 60mm blades combining to give 120mm width.

Louvre 120



A traditional bevel-back weatherboard profile, but with a sharp line which also lends itself well to contemporary designs. 120mm wide.

Shiplap



A traditional rusticated weatherboard look when installed horizontally, yet equally at home in contemporary designs when installed vertically. 150mm wide.



nu-wall[®]

ALUMINIUM CLADDING

Design for a weathertight future

Design with Nu-Wall – the weatherboard cladding that doesn't need to look like weatherboards. Get exactly the look you want by selecting from 12 different profiles and a wide range of factory-applied colours. You can also choose either horizontal or vertical application of the cladding. Or - if a weatherboard look is what you want, Nu-Wall can do that too!

Weathertight with Nu-Wall – tested and appraised by BRANZ as being compliant with the requirements of the New Zealand Building Code, Nu-Wall can be relied upon to be Weathertight and to stay Weathertight for the life of the building. The interlocking weatherboard profiles keep the water on the outside, while the proprietary installation and flashing system has been designed to drain any moisture to the exterior, ensuring that structural framing is kept dry and protected.



Future with Nu-Wall – the extruded aluminium weatherboard profiles are tough and durable; made to last the lifetime of the building and beyond. Factory-applied powdercoat or anodised finishes will retain their smart appearance for many years with the only maintenance requirement being washing with mild detergent.



Aero 70 - Horizontal

Beyond the life of the building, Nu-Wall is fully recyclable, thereby enabling partial recovery of the initial investment in the product – both financial and in terms of the energy used to produce it. Furthermore, because it is recyclable, Nu-Wall won't present a disposal problem at the end of the building's life.



Before



After re-clad with Louvre 60 - Horizontal



After re-clad with Shiplap - Horizontal

Before



Recladding

In addition to being used in construction of new buildings, Nu-Wall is entirely suitable for use in renovation and remodelling projects. Furthermore, Nu-Wall has become the cladding of choice for many of those involved in remedial recladding of buildings which have suffered damage due to water ingress ("leaky buildings"). The weathertightness and long-term durability which the product offers provide assurance that recladding with Nu-Wall will provide a permanent solution.



Mono 190 - Horizontal

Mono 190 - Vertical



Horizontal

Before



entirely
Nu-Wall
remedial
ingress
y which
Wall will



Aero 70 - Vertical



Aero 190 - Vertical

Residential & Commercial Applications

Nu-Wall is suitable for use on both residential and commercial projects; the choice of profiles and finishes providing Designers with a palette to suit most applications. While the product's standard installation specifications relate to residential and light commercial construction within the scope of NZS3604, resources are available to support application of the product outside of this. Nu-Wall has been used extensively for cladding a wide range of building types throughout New Zealand and Australia.



Mono 190 - Vertical



no 190 - Vertical

For both new builds and reclads, Nu-Wall offers the permanent solution.



Aero 70 - Garage Door



Mono 190 - Soffit



Ullos - Fence

Non Cladding Applications

Though primarily an exterior cladding, Nu-Wall has many applications on construction projects, both exterior and interior;

- **Garage Doors**
- **Soffits and canopies & ceilings**
- **Counter fronts**
- **Interior feature walls**
- **Doors and gates**
- **Fences and balustrades**
- **Shutters, screens and space dividers**
- **Integration into furniture designs**

Manufacture

Nu-Wall is wholly manufactured in New Zealand. The extruded profiles are produced by an ISO9001-certified manufacturer, with powdercoat or anodised finishes being applied by approved Applicators, per the requirements of any project.

Installation

No specialist processes are involved, enabling installation to be carried out by any competent builder

Trademark

Nu-Wall is the registered Trademark of Nu-Wall Aluminium Cladding Limited.

nu-wall[®]
ALUMINIUM CLADDING
Design for a weathertight future

Nu-Wall Aluminium Cladding Limited

Tel: +64 (9) 582 0040
 Fax: +64 (9) 579 5649
 Freephone: 0800 689255
 Email: info@nu-wall.co.nz

Postal Address

P.O.Box 74280
 Greenlane
 Auckland 1546

Physical Address

750B Great South Rd
 Penrose
 Auckland 1061

Resources for Specifiers

All standard detail specifications are available in a range of CAD formats; downloadable from the Nu-Wall website or on CD media. Assistance is available for projects requiring Specific Design.

Performance

Nu-Wall has been appraised by BRANZ as being suitable for use as an exterior cladding in compliance with the requirements of the New Zealand Building Code. Three Appraisals have been published –

- #550** Horizontal installation over a drained & vented cavity
- #556** Vertical installation; direct-fixed to framing
- #557** Horizontal installation; direct-fixed to framing

Warranty

When installed in accordance with our specifications, Nu-Wall complies with the provisions of NZBC Clauses B1 Structure, B2 Durability, E2 External Moisture and F2 Hazardous Building Materials. Further to this we guarantee the aluminium weatherboards, in normal use, against rotting, rusting, cracking or distorting for 100 years (or the lifetime of the building).

BRANZ have issued Appraisals for:

- Horizontal installation over a drained & vented cavity (#550)
- Direct-fixed vertical installation (#556)
- Direct-fixed horizontal installation (#557)

